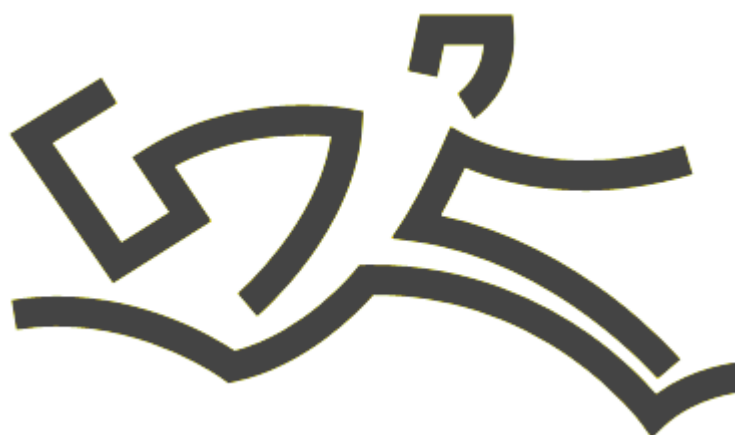


# Comersus Cart User's Guide



Welcome to **Comersus Sophisticated Cart**

*"Build a powerful online business today"*

Comersus-based solutions enable your electronic commerce needs today and provide the framework that will support new ways you can engage in e-commerce in the future.

This document was last updated on July 29, 2014 for Comersus 9.20

---

This page was intentionally left blank.

# Table of Contents

.....	iv
<b>Welcome to Comersus</b> .....	<b>6</b>
About the founder of Comersus.....	6
Requirements.....	7
Technical Support.....	8
<b>Getting Started</b> .....	<b>10</b>
Installing the software in a remote server.....	10
Installation on a local server.....	11
Additional instructions for Access and Windows 7.....	14
Configuration Wizard.....	14
BackOffice Lite.....	17
Security Concerns.....	24
About BackOffice Plus.....	26
<b>Settings</b> .....	<b>27</b>
StoreFront Basic Settings (comersus/includes/settings.asp).....	27
StoreFront Advanced Settings .....	28
E-mail Settings.....	30
Changing Your Password.....	31
Store Terms & Conditions.....	31
SSL Certificate.....	31
Currencies.....	32
States and Countries.....	32
Recaptcha Verification.....	32
Screen Messages.....	32
Multiple Stores.....	32
<b>StoreFront</b> .....	<b>35</b>
Getting Ready to Add Products.....	35
Adding New Products.....	36
Product variations.....	39
Modifying & Deleting Products.....	40
YouTube Embedded Videos.....	40
Mp3 Sample Music.....	40
Multilanguage Support.....	40
Creating and Modifying Product Categories.....	41
Managing Stock.....	42
BackOrder Stock.....	44
Advanced Stock Calculations.....	44
Related Products.....	44
Bundle Products.....	45
Recurring Items .....	45
Subscription Areas.....	45
Rental Products.....	46
.....	47
Hotel/Hostel Products.....	47
Compare prices with Amazon.....	47
Suppliers.....	48
Moderating Reviews.....	48
Newsletter.....	48
News Page.....	48
Auctions.....	49
Wish List.....	49
Google Ad-Sense.....	49

RSS Feed Icon.....	50
Facebook .....	50
Twitter .....	50
Donation Items.....	51
<b>Discounts and Promotions</b>	<b>51</b>
Specials and Featured Items.....	51
Discount by Code.....	51
Discount by Quantity.....	53
Discount per customer (special prices).....	54
Newsletter, Offer Box and Auctions.....	54
Discount Clockdown.....	54
<b>Shipping Options</b>	<b>55</b>
Non Real Time Shipping Options.....	55
Real Time Shipping (UPS, USPS, Canada Post, Fedex).....	55
InterShipper (Mix UPS, USPS, Fedex and DHL quotes).....	56
Bypassing Shipping Calculations.....	57
Volume Calculation.....	57
<b>Payment Options</b>	<b>57</b>
About Real Time Credit Card Processing.....	58
About PayPal Payments.....	60
Adding a Payment Option.....	61
Configuring a Real Time Payment Option.....	61
Configuring Offline Credit Card Processing.....	62
Defining payment by customer type.....	62
Modifying a Payment Option.....	62
Delayed Payments.....	63
<b>Tax Options</b>	<b>63</b>
Adding a New Tax Rate by Region.....	63
Viewing/Modifying Tax Rates by Region.....	63
Adding a New Tax Rate by Product.....	64
<b>Sales and Customers</b>	<b>64</b>
Customer types.....	64
Viewing Customer Information.....	64
Adding a New Customer.....	65
Orders.....	65
Adding custom fields.....	66
Managing Your Orders.....	66
RMA Request.....	67
How to Locate an Order.....	67
How to Charge Off-line Credit Card Transactions.....	68
Fraud Prevention Package .....	69
PreCharge.....	70
TeleSign Customer Confirmation.....	70
Generating Invoices from the BackOffice.....	70
Reward Bonus Points.....	70
Recurring Billing.....	71
Reports and Charts.....	71
Generating Sales Reports.....	72
Customer Tracking.....	73
Affiliates.....	73
Affiliates and Suppliers Own Sales Listing.....	74
Adding Forbidden Keywords for Sales.....	74
Serial Codes Management.....	74
Store Survey.....	75
<b>Utilities</b>	<b>75</b>
Generic SQL.....	75
Reset Functions.....	75

Exporting data to Microsoft Excel Spreadsheets.....	76
Exporting data to VCF .....	76
Importing Tab Delimited Data.....	76
Deleting Unclosed Sessions.....	76
Generating StoreFront Links.....	77
Wordpress plug-in.....	77
<b>Customer Menu</b> .....	<b>78</b>
Enabling Digital Goods Download.....	79
Sending download links and digital goods by email.....	80
Selling Streaming Videos.....	80
<b>Professional Databases</b> .....	<b>81</b>
Creating the Microsoft SQL Server Database.....	81
Creating the mySQL database.....	82
<b>On-Line Payment Gateways</b> .....	<b>83</b>
2Checkout .....	83
PayPal Standard.....	84
PayPal Web Site Payments Pro.....	84
Cardinal 3dSecure for PayPal Pro UK.....	85
Authorize.net SIM.....	85
Authorize.net AIM.....	86
Google Checkout.....	87
BeanStream.....	88
PayZip.....	88
Protx.....	89
OzHosting.....	89
SecurePost.....	90
CyberSource.....	90
Payment Processor.....	90
EPDQ.....	91
WorldPay Junior Method.....	91
LinkPoint API.....	91
LinkPoint Basic.....	92
Bank of America.....	92
CCNow .....	92
eWay.....	93
UsaePay Client .....	93
Other payment gateways.....	93
<b>Performance and Speed</b> .....	<b>94</b>
Database.....	94
Static Pages.....	94
Image Optimization.....	95
Compiled Code.....	95
Load Balance.....	95
Other changes.....	96
<b>Troubleshooting</b> .....	<b>96</b>
Diagnose the trouble.....	97
Get Assistance.....	97
Useful Tips.....	97
Diagnostics and Tools Application.....	98
<b>Appendix A</b> .....	<b>100</b>
HTML links to main store pages.....	100
<b>Appendix B</b> .....	<b>101</b>
Customizing your store's graphical interface.....	101
<b>Appendix C</b> .....	<b>103</b>
How Language Works for Comersus .....	103
Multilanguage step by step .....	103
Editing messages generated by Comersus.....	104

Defining customer languages selection.....	104
<b>Appendix D</b>	<b>105</b>
Frequently Asked Questions.....	105
<b>Appendix E</b>	<b>112</b>
ERD Database Chart.....	112
Relationships and fields .....	114
Database description.....	115
<b>Appendix F</b>	<b>124</b>
Comersus Power Pack.....	124
<b>Appendix G</b>	<b>125</b>
Programming reference.....	125

This page was intentionally left blank.

# Welcome to Comersus

---

## Chapter

# 1

**C**omersus is a sophisticated e-commerce system resulting from research and experience gained through years of work in electronic commerce strategies. The system's base was developed in 1997 in response to a multinational firm's requirements. The company wanted to replace its legacy e-commerce system, based on a famous product developed in Perl and considered to be complex, rigid and expensive. Comersus was successfully installed in that site, and then in others after numerous recommendations. Finally, the commercial launching of the solution was decided. The commercial implementation of the system was accomplished in the year 2000, in the Open Source mode.

Comersus has been installed all over the world in over 20,000 sites, and has gained recognition as an economical, flexible, sound, and powerful solution.

Comersus solutions provide optimum performance in a variety of industries, including: Software, Book Stores, Retail, High-Tech, Automotive, Consumer Goods, Medical and Services.

**Anecdote:** The first-ever public release of Comersus only included one page of instructions that covered installation, with special attention to assigning the proper permissions. Of course, the first technical question from the first user who downloaded Comersus was "How do I assign permissions?" Which gives us the perfect excuse: Why bother writing a good user's guide when nobody will read it anyway?

## About the founder of Comersus

Comersus was started by Rodrigo S. Alhadeff, a 22-year-old Argentinian programmer of Greek descent.

Rodrigo's first experience with computers came when he was 10, using an old Microdigital TK-85 with 16Kb RAM. He learned Basic Language using the TK-85 owner's manual. Soon he made his first artificial intelligence-based friend: "It was a small application to maintain a chat in Spanish. Actually I made 3 friends, all with different personalities. I think I could have replicated my primary school teachers' personalities with enough RAM at the time."



Twelve years later, Rodrigo developed Comersus 0.1 in one "long winter's night", rushing to replace an old Perl Cart that had crashed suddenly under pressure from huge traffic at the website of the company he was working for.

"Even with the emergency, I wanted to make one clean and scalable application to replace our old cart. From the start I thought about modular small pieces of code that could grow to compound a huge system. Easy to fix, debug and scale."

The company went bankrupt and, one week later, Rodrigo was still receiving orders from the e-commerce site. "The cart was the only thing that survived, then I thought: I have to do something with this application." The name Comersus seemed suitable as a combination of something new, modern, related to the shopping cart (e-commerce) and a sound with a historical and solid feel to it (sus), which also includes the letters of the United States (US), since the Internet and most programming was produced in the US. Why Open Source? "I had read a lot about the Open Source movement: Raymond, Linus, Larry Wall; and apart from liking their philosophy, I thought it was the only chance of getting skillful contributors from all around the world in a short period of time."

A few months after the first public release, Rodrigo typed "Comersus" in a search engine and became amazed at how many stores were using Comersus Cart. "I realized I was on the right track and then I decided to dedicate 100% of my time to Comersus."

## Requirements

Comersus requires very little for basic operation. If your website is hosted on a Windows server, just by uploading Comersus files to your server, you will surely be able to use the shopping cart and start selling in minutes.

However, Comersus is a flexible and feature-rich application. If you want to implement real-time shipping quotes or a payment gateway you may have to install specific components on your server or support other server features. Use the requirements below as a starting point and contact us if you have any doubts about additional requirements for the advanced features you want to use.

### Requirements for the server where you install Comersus

**Note:** Comersus offers hosting services designed especially for the shopping cart. If you host with us, you don't need to worry about these requirements. Comersus hosting also includes technical support by staff specialized in Comersus configuration and customization. More information at <http://www.comersus.com/hosting/>

- A Web Server that supports ASP scripts (most Windows Servers do, some Linux-Unix also)
- Support for mySQL (Comersus can also use Access and SQL Server)

- 50mb disk space (live stores create records over time, so you may need more space in the future)

### Requirements for store management

- Web Browser (Internet Explorer, Firefox, Chrome)
- An email account where you can receive store notifications

### Requirements for optional features

- One of the email components supported by Comersus (to send email): JMail, ServerObjectsASPMail1, ServerObjectsASPMail2, PersistsASPMail, CDONTS, Dundas, OCXMail or BambooSMTP.
- File System Object (for file upload, digital goods download, and export)
- XMLHTTP (for real-time shipping quotes, certain payment gateways, preCharge, and Amazon comparison)
- ASPZIP (for digital goods download)
- ASPUpload (for image upload)
- An SSL certificate installed on your server (if you take offline payments or if you want to log in securely to your Backoffice, or present a secure Storefront to your customers)

### Skill requirements

No special skills are required to use Comersus, but you may need basic FTP file transfer and HTML knowledge to install the store, and ASP programming and SQL skills to customize it.

Comersus developers are available to provide training in Miami, Florida, or in-house wherever you are based. Training courses are individual, allowing you to make the most of all the features Comersus has to offer, based on your needs. As a store administrator, you can learn to configure your store to achieve exactly what you need, as well as learn about backups, security measures, file import, and many other tasks that will improve your store management. Comersus training courses are affordable, and experience has shown that the investment is quickly regained when applying the new knowledge.

**Anecdote:** A case in point is that of a music download store administrator who modified his store to add sample tracks to each product after taking the training course. His sales increased 30% in just one month. This is an example that investment in the course is usually insignificant when compared to the benefits of attending.

## Technical Support

Comersus User's Guide covers most topics related to installing and using the shopping cart. However, if you ever need some extra guidance you are free to read Comersus Technical Forum:

<http://www.comersus.org>

**Professional Support:** If you need remote assistance to install or configure the store, you can ask for a quote at <http://www.comersus.com/contact.html>

## Getting Started

---

**B**efore you can start using Comersus, the software must be uploaded to your server and the database configured. The following paragraph provides step-by-step instructions on how to perform this task.

### Installing the software in a remote server

**Note:** If your hosting service is Linux, check that ASP scripts are supported. If not, you can hire our hosting services at <http://www.comersus.com/hosting/>

1. Unzip comersus.zip into a local folder named *comersus*
2. Use an FTP Client to upload the contents of the local folder to your web hosting space. Copy the contents of comersus folder inside WWWRoot (the root of your web server). <http://www.Your Domain Here.com/comersus> folder must have this structure:

```
.          <DIR>      12-20-01  9:22p .
..         <DIR>      12-20-01  9:22p ..
DEFAULT ASP      301 10-11-01 12:46p default.asp
GLOBAL ASA       634 12-02-01 12:33p global.asa
STORE           <DIR>      12-20-01  9:22p store
```

INCLUDES	<DIR>	12-20-01 9:22p includes
BACKOFFICELITE	<DIR>	12-20-01 9:22p backofficelite

3. Ask your web hosting support to assign all permissions for web upload on Comersus/store/catalog folder

4. If you want to use mySQL or SQL Server databases, ask your web hosting provider for Host, user, password and database name and enter that information into comersus/includes/settings.asp

Preconfigured connection strings are provided for both databases. You will also have to setup pDatabase="mysql" or "sqlserver"

Remember to comment or remove default Access connection string

*Note: you can find more information about mySQL and SQL Server installation in Professional Databases Chapter*

5. Open your Web Browser and load [http://www.YourDomainHere.com/comersus/backofficelite/comersus\\_backoffice\\_install.asp](http://www.YourDomainHere.com/comersus/backofficelite/comersus_backoffice_install.asp)

6. Installation Wizard will appear. There you will enter your store name, date format, etc

**Hire our installation services:** If you cannot install the cart in your web server, you can hire us. A default remote installation just takes \$140. More information at <http://www.comersus.com/purchase/>

## Installation on a local server

1. Unzip comersus.zip into a folder named *comersus* (If you have downloaded fixed folder version, *unzip comersusf into a folder named comersusf*)

2. Copy the contents of comersus folder inside WWWRoot (the root of your web server). Your Comersus folder must have this structure:

.	<DIR>	12-20-01 9:22p .
..	<DIR>	12-20-01 9:22p ..
DEFAULT ASP	301	10-11-01 12:46p default.asp
GLOBAL ASA	634	12-02-01 12:33p global.asa
STORE	<DIR>	12-20-01 9:22p store
INCLUDES	<DIR>	12-20-01 9:22p includes
BACKOFFICELITE	<DIR>	12-20-01 9:22p backofficelite

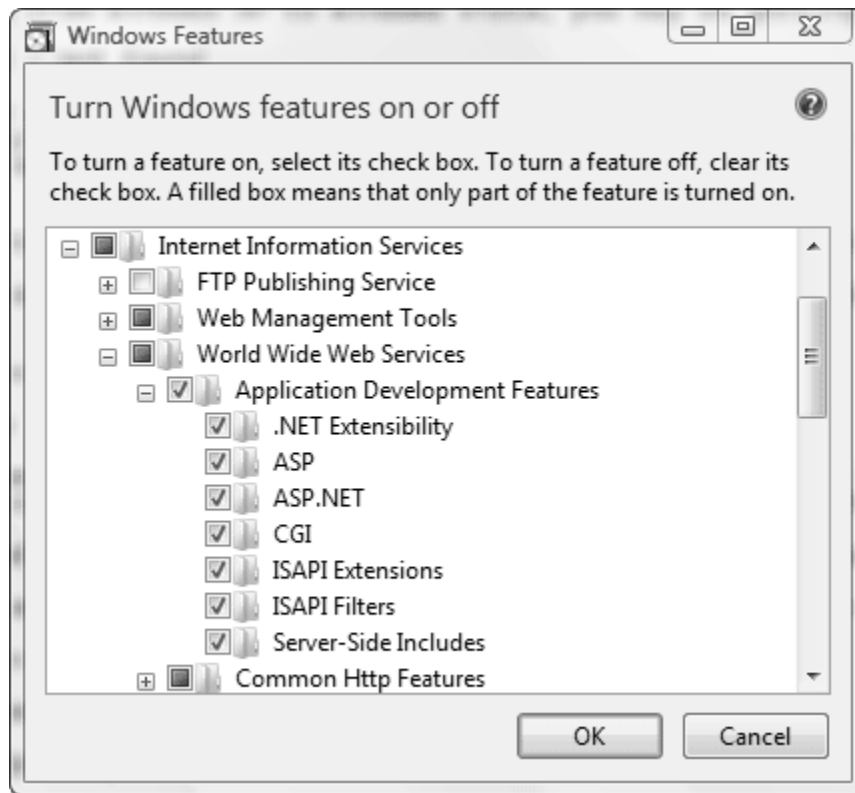
3. If you want to use mySQL, download and install mySQL Community Server 5 from

<http://dev.mysql.com/downloads/> and install it. Download also MySQL ODBC Connector from <http://dev.mysql.com/downloads/connector/odbc/> and install it. Open `comersus/includes/settings.asp` and setup MySQL credentials in the MySQL connection string. Remove default Access connection string

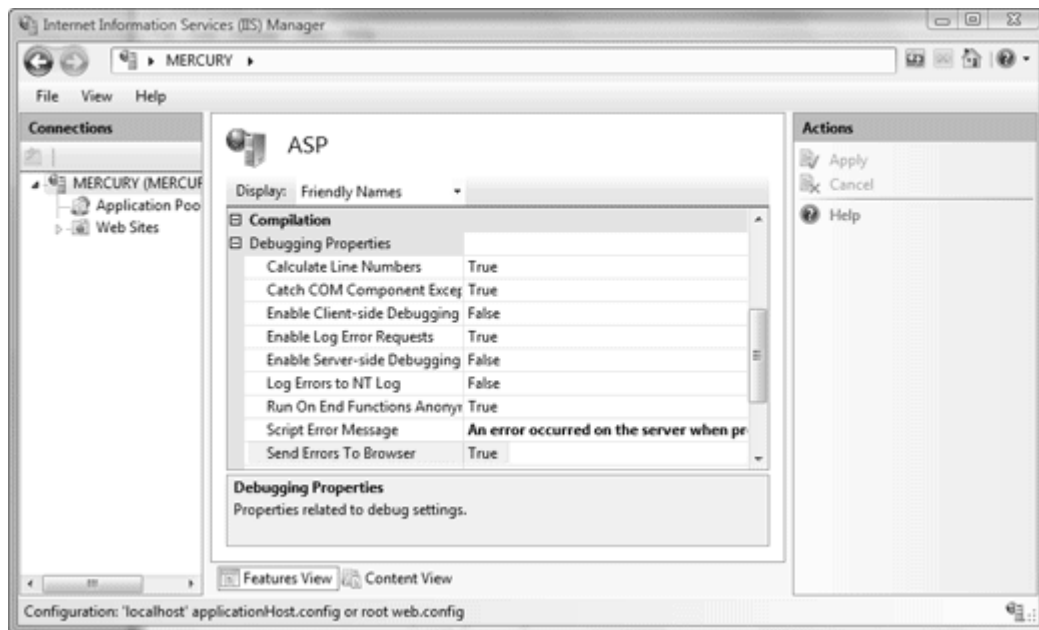
*Note: you can find more information about MySQL and SQL Server installation in Professional Databases Chapter*

5. . Right click on `comersus/store/catalog` folder  
. Go to Security tab, give all permissions to IUSR account to the Windows directory security with Modify; Read & Execute; List Folder Contents; Read  
Do the same for `/comersus/database` folder

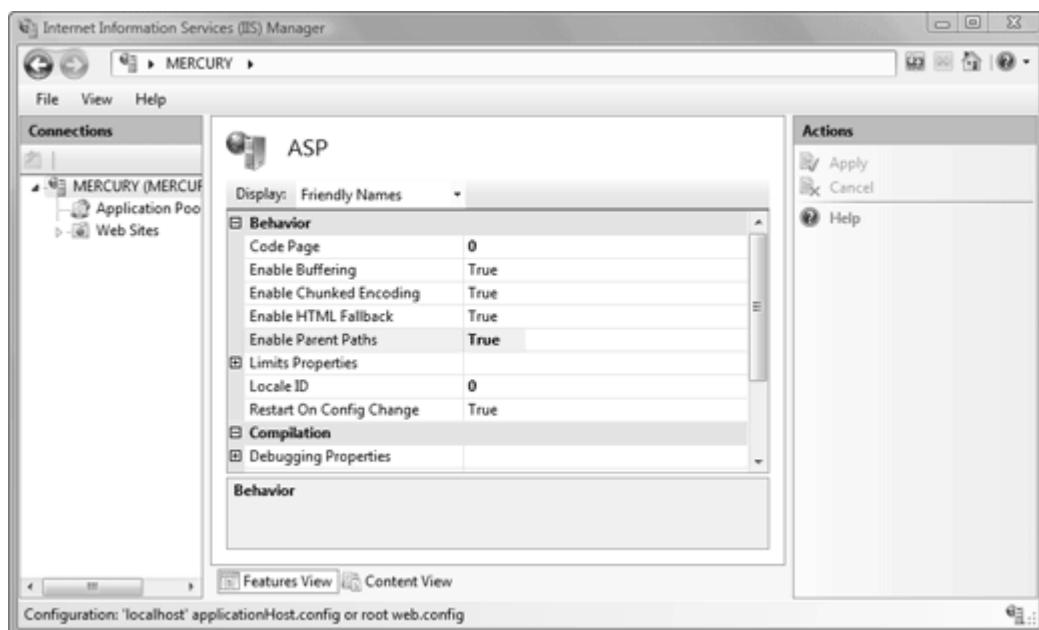
6.Enable ASP into Windows Features: Go to control panel > Programs and Features > Turn Windows features on or off > Internet Information Services > World Wide Web Services > Application Development Features.



7. Change the 'Send Errors To Browser' setting to 'True'. Go to IIS Manager > ASP > Debugging Properties



8. Change 'Enable Parent Paths' setting at IIS Manager > ASP > Behaviour



9. Open your web browser and load <http://localhost/comersus/> The database configuration wizard

should appear.

## Additional instructions for Access and Windows 7

1. Start ODBC 32 and create a DSN for Comersus.mdb
2. Open a Run Accesories, Command Prompt (right click, run as administrador) this command  
`%windir%\system32\inetsrv\appcmd set config -section:applicationPools -applicationPoolDefaults.enable32BitAppOnWin64:true`
3. Share /database folder
4. Remove read only  
`attrib -r c:\Inetpub\wwwRoot\comersus\database`

## Configuration Wizard

Comersus is a shopping cart with numerous configuration options, some of which require a long description, so we have created an Installation Wizard with the most common configuration options to help you set up the store in a matter of minutes.

After installation, when you try to access the store for the first time through the URL <http://localhost/comersus> or <http://www.Your Domain Here.com/comersus> you will be redirected to the Installation Wizard.

### - Step 1

The Wizard requests information on your company. The company name will be displayed in outgoing emails, and full company details will be displayed on the order confirmation screen and other internal pages with contact info.

**Did you know that...?** The address you enter at this Step has other uses. If you set up real-time shipping quotes, this will be the address where goods are shipped from. So you should pay special attention to the fields for country, state code and zip code.

### - Step 2

The Wizard requests region-specific information such as date format and currency. The currency symbol will be displayed on all pages where prices are shown. The date format will be used to interpret the date received from the server. Contact your web hosting support or go to Settings/Regionalization to find out your server's date format.

### - Step 3



Several shopping cart options are enabled or disabled: checking stock before adding an item to the cart, setting a minimum purchase amount, disabling registration of new customers (used for private stores), generating customer passwords automatically (so that they don't need to specify one), displaying stock levels, and others. You can also choose how many products to display on the home page and how to label optional fields during checkout (for example: "How did you learn about our store?").

#### - Step 4

The Wizard requests information about the payment methods you want to enable in your store. Consider that by default the Free Distribution supports offline credit card payments (storing credit card data for manual processing later on), PayPal payments, and other offline methods such as Wire Transfers and Checks.

**Did you know that...?** Comersus has a special offer for 2Checkout, a popular online payment system. Users who sign up with 2Checkout through the link provided by Comersus can request scripts to take credit cards online free of charge. If you have an account with 2Checkout, enter your store number at Step 4, and the Wizard will take care of configuration. Remember to contact Comersus and request your scripts after you sign up. Note: This special offer may be discontinued at any time. Contact us to inquire about current offers.

#### - Step 5

The Wizard requests basic information to set up static shipping rules. If your store doesn't require shipping (because you sell digital goods such as mp3, serial codes, or downloadable software) you can set by-pass shipping.

Consider that the Wizard will help you set up basic shipping rules. Professional stores will usually require real-time quoting systems or more complex rules that cover all options and destinations. These can be configured later on.

The Wizard allows two service types for a local zip (considering the country and state where the company is located) and one additional service type for customers abroad. Weight can be specified in all cases. For example: \$5 shipping by UPS to a local zip applies when the package weighs between 1 and 3 lbs.

#### - Step 6

The Wizard performs basic tax configuration consisting in a tax percentage for customers in the same state and a different percentage for customers elsewhere. Of course you will be able to make adjustments later on, even configuring product-specific taxes.

#### - Step 7

The Wizard configures settings to send email from the store. If you are not sure about the

information required, leave NONE as the email component, since an incorrect configuration could produce errors during checkout. We suggest you contact your web hosting support and ask:

- a What email components are installed on the server?
- b What is the SMTP URL?
- c What POP accounts are configured for my domain?

The answers will help you configure this Wizard step.

If you have your own server and you are unsure about email configuration, we suggest the following:

- a Download the free email component Jmail from [www.dimac.net](http://www.dimac.net)
- b Install it on your server
- c Select Jmail at this step of the Wizard
- d Take the SMTP mail server and email from account information as they are configured in your mail client (Outlook or other)

## - Step 8

The Wizard requests your administrator password and encryption key. The password will then be used to log into the Backoffice, where you will be able to manage your products and sales. Remember the user for login will be "admin".

The encryption key should be a combination of numbers and letters only known to you. It will be used to encrypt sensitive data in your store. The string shown here by default is a random combination, so you may leave it unmodified.

## - Step 9

If you have purchased a Power Pack from <http://www.comersus.com/power-pack.html> (to add advanced features to your store) you can indicate it here, and the Wizard will configure the internal access links to the Power Pack features.

After completing Step 9 you will be able to access the Backoffice to load categories and products, and finally test the store.

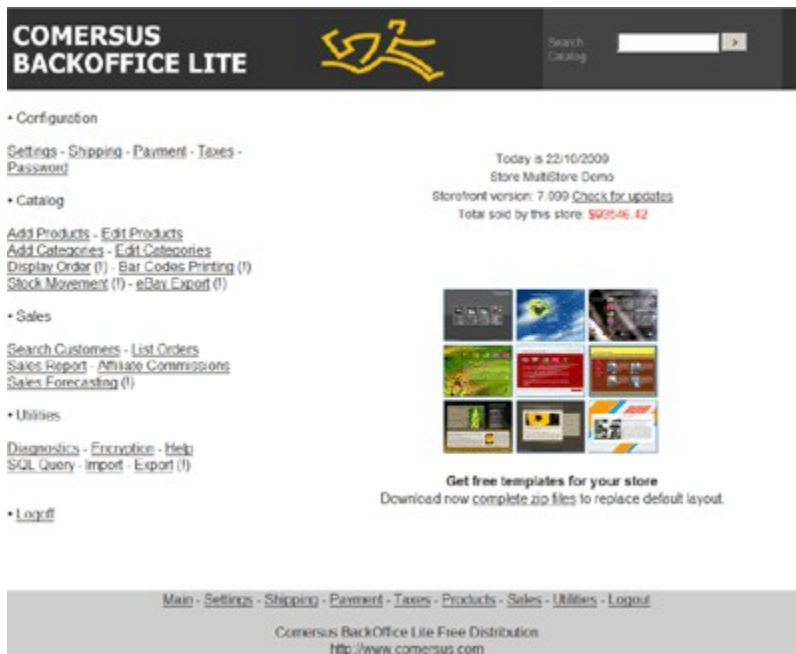
If you have purchased the Power Pack, you may now refer to the section that explains the use of BackOffice Plus (the full control panel). Otherwise, continue to the section on BackOffice Lite (the basic control panel provided with the Free Distribution).

**Did you know that...?** The Power Pack include many features to help you sell more and offer more services to your customers. Some of the most appealing features in the Power Pack are: online payment methods, real-time shipping quotes, complete Control Panel, support for professional databases (SQL Server and mySQL), Recurring Billing and Digital Goods distribution, among many

others. The Power Pack is very conveniently priced, since developing the advanced features in-house would prove far more expensive, not to mention time-consuming.

## BackOffice Lite

BackOffice Lite is the basic control panel you will use to manage your store if you have the Free Distribution only. Power Pack Medium, however, includes the advanced control panel, BackOffice Plus.



## Login

To enter BackOffice Lite, type in your browser the URL <http://www.YourDomainHere.com/comersus/backofficelite>, or <http://localhost/comersus/backofficelite> in the case of a local installation.

Enter the user "admin" and the password you selected at step 8 of the Installation Wizard.

If the information is correct, you will see a menu with options.

**Did you know that...?** If you can't remember the password you selected, download Diagnostics and Tools from Comersus website and reset the password. Another option is repeating installation steps.

## Configuration Menu

### Settings

From this option you can modify most configurable aspects of your store. Some settings require that you enter **-1 (true)** or **0 (false)**. This is a Vbscript convention.

Before making a change, make sure you understand the scope of your actions. If you are running the Free Distribution and select Real Time Shipping, your customers will not be able to check out since Real Time Shipping utilities are not available with the Free Distribution.

You should also be especially careful with the pEncryptionPassword field. Any modification to this setting will disable all passwords stored previously.

### Sidebar snippets

From this option you can select snippets for the sidebar of default template like Wordpress widgets. Some of the available selections are: Your Account, Cart Information, Best sellers, Search, Suppliers List, Categories, Google Ads and Reviews.

### Header image



### Header Selection

This selection changes the header for Comersus version 9 default template



Here you can select a main image that will appear in store index. There are 14 options like eBook store, fashion, IT, nature and more.

### Layout color

This option will let you choose a color for the default template.

## Payment

Here you can choose payment configuration options like PayPal.

## Taxes

Off line tax rules according to customer location with percentages. Consider that Power Pack includes online tax as well.

## Products Menu

### Products

From this option you can manage the categories and products in your store. The add product page presents several fields for you to fill in. Remember only the fields marked with an asterisk are required.

- SKU: An internal code for a product. Enter a code that is meaningful to you. Comersus will automatically assign a number to each item as well.
- Description: A brief description of the product.
- Details: All product details. You may even use HTML tags to add format, for example:

<b>Great Product!</b>

**Did you know that...?** BackOffice Plus products management includes HTML editor to add format to Details easily, with no need for HTML tags.

- Price: Product retail price.
- List price: Price used for the notice "You save \$x".
- Wholesale price: Price for wholesale customers.
- Weight: Product weight. This value is used for shipping charge calculations.
- Info to distribute: Static information you wish to distribute when the product is sold. For example, a link to a private page in your website or a serial code for software.

*Note: The information distributed is the same with each sale, so there is a risk that the information is shared with others who have not purchased the item. Power Pack Premium supports advanced features such as creating multiple serial codes and distributing unique links with expiry.*

Category: Select up to 3 categories for the product. This information is used to access products from a category list.

**Did you know that...?** A category can contain either products or further categories (subcategories). Any given category cannot contain both products and

subcategories. Therefore, you may not see all existing categories for selection in the drop down menu.

**Form quantity:** The field where you load the drop down menu for customers to choose quantity. If you sell a unique product you will want to enter 1, but if you have a product with multiple stock you will want to enter for example 10, or even more.

**Clearance, Show In Home and List Hidden:** These checkboxes define if the product will be featured in a special section of the store: in a clearance listing, on the home page, or on a page hidden from searches that can only be accessed with a direct link (the ideal configuration for private products).

**Variations:** Options on a product that the customer can select. In the case of clothing, the variations are typically colors and sizes. Here you can configure up to 2 variation groups with 3 variations each.

With BackOffice Lite you can also edit and delete products. You should first search the product by entering a string from Description, Details or SKU, and then choose the desired action. Note that only products that have no related orders can be deleted. If the product has been previously sold, you can disable it from the store, rather than delete it.

## Categories

From this option you can add and edit categories. The add category page prompts you to enter the category name and choose the parent category. If you are adding a main category, choose Root as parent. Then the new category will be displayed as a main root of the tree.

With the edit option you can modify the category description and location within the tree, as well as delete unnecessary categories. Note that only empty categories can be deleted. Relocate or delete products and subcategories before deleting a category.

## Sales Menu

From this menu you can manage customers, orders, reports and commissions.

### Customers

From this option you can search customers by entering a string from their names or email addresses. After locating a customer you can send an email, modify personal information, modify customer type, and disable them if you don't want them to log in and purchase.

**Did you know that...?** You can define Retail and Wholesale prices. Customers who register from the Storefront are automatically loaded as Retail, but the admin can then mark them as Wholesale so that they pay these special prices.

### Orders

From this option you can list the orders that were placed at the store. An order list is displayed first. You can click on any order to see details.

The orders list in BackOffice Lite is not paginated. If your store has a large number of historic orders it will be preferable to use BackOffice Plus, where lists are paginated and orders can be selected with no need to list them first.

**Did you know that...?** Orders are not necessarily the same as payments. Hundreds of orders may be placed at your store, but this doesn't mean they have all been paid for. When a customer enters their information at checkout and confirms order details, Comersus generates an order that remains Pending until the customer enters payment and the order becomes Paid. Payment notification can come from an online payment gateway with call back response or IPN, or from the BackOffice when the admin processes a payment manually and marks the order as Paid.

At the order details page you can see all information on the order. If the payment method is offline credit cards, you can click on View Credit Card and obtain the encrypted credit card number. To decrypt it, copy and paste the string at Utilities/Decrypt.

From this section you can also delete an order, roll it back or mark it as Paid. Marking an order as Paid will trigger internal processes to update stock, increase sales, distribute digital goods (if any), and send email notifications. If you use an online payment gateway with call back response, such as 2Checkout, you don't need to change order status manually since the gateway does this automatically with an online notification to Comersus.

## **Sales Report**

From this option you can get a simple sales report by month, including a chart.

The Free Distribution does not offer further reporting capabilities, but it does store all sales data, so you will be able to get reports later on.

When you install BackOffice Plus you will be able to view detailed historic reports including sales, stock, costs and profit.

## **Affiliate Commissions**

If your store has affiliates, from this option you can list their commissions, calculated based on paid orders. We suggest you keep a detailed record of payments that you can consult in the future to verify differences, for example in the case of chargeback on a payment.

## **Utilities Menu**

In this menu you will find utilities to maintain, configure and diagnose your store.

### **Diagnostics**

From this option you can diagnose database functions, ASP support, security, emails and sessions. If you report a technical problem, our support staff may ask you to perform some of these tests to check the functioning of the store.

### **Launch Store**

This is a direct link to your store URL. If you have just made changes and wish to test them, you can use this link for direct access to your store.

### **Encryption**

From this option you can enter strings for encryption or decryption. It is especially useful to decrypt credit card information in the Free Distribution.

### **SQL Query**

From this option you can operate on the database by means of SQL sentences. Using this utility requires SQL knowledge, and incorrect use could delete important data from the database and damage the store.

Users with SQL knowledge will find it very useful to diagnose problems, execute simple reports, and configure aspects of the Free Distribution that are not readily manageable from Backoffice Lite.

### **Change admin password**

From this option you can modify the password for the store administrator (admin). Make sure you use a combination of letters and numbers from 6 to 10 characters long.

### **Import Menu**

If you have an existing catalog, you will surely prefer to import it rather than load all the information manually. From this option you can import CSV text files with your categories and products.

Consider File System Object must be enabled in your server, and the import files must be located in the BackOffice Lite folder.

Detailed instructions about the name and format of the import file are available in the BackOffice.

### **Shipping Menu**

While Comersus is compatible with real time shipping quotes, the Free Distribution online



supports offline shipping rules. This means you will configure shipping charges based on order details. For example, you can indicate that a 2 lb package to Miami, Florida, will be shipped by UPS Ground at \$5.

The add shipping page prompts you to enter a description (usually the service type, such as UPS Ground or Fedex 2nd day), type of customer, weight range, number of items in the cart, order total, shipping charges (an order percentage or dollar value), and customer location.

**Did you know that...?** If your store sells digital goods or services, you may disable shipping screens at checkout. Simply set `pByPassShipping` at -1 (true) from BackOffice Settings.

At edit shipments you can list current shipping rules and delete those you don't want to display at checkout. Modify shipments is not included in BackOffice Lite.

## Payment Menu

From this option you can manage the payment methods enabled in your store. Remember the Free Distribution supports PayPal, offline credit cards, and other offline methods such as Wire Transfers and Checks. If you have followed all Wizard steps, you probably have payment methods configured already.

The add payment page prompts you to enter a description (to be shown to the customer at checkout), product quantity (this allows you to offer credit card from 1 to 10 products and Wire Transfer only for over 10 products, for example), order total (with the same purpose as product quantity), fixed or percentage price (an additional charge for choosing this payment method, used in some countries), `redirectionUrl` (optional field to define where the user is redirected to place payment or find payment information), information to distribute (additional details, such as account number, that the customer will receive by email provided the setting `pDisableSaveOrderEmail` is disabled).

At edit payments you can list current payment methods and delete those you don't want to display at checkout.

Make sure there is at least one payment method available at all times, otherwise your customers will not be able to check out.

## Logoff

Make sure you log off after using BackOffice Lite so that nobody else can access your control panel while you are away from the computer.

## Notes on BackOffice Lite

BackOffice Lite is a basic management utility designed to set up a store and manage main functions at the early stages of an e-commerce implementation. If your store is already getting orders and payments, and you are sure about your choice for Comersus, we strongly recommend you upgrade to Power Pack Medium or Premium. You will receive BackOffice Plus, the full control panel, with many advanced utilities and reports described below. You can try the online demo at <http://www.comersus.com/products/comersus-cart/demo/>

## Security Concerns

Before going live with your store you will have to verify your company security policies and maybe obtain advice from a Security Specialist to avoid the attack of Crackers and fraudulent activities from users.

We will provide some initial tips to secure your store.

**Database:** if you are using Access you must consider that the database is stored in one file named comersus.mdb By default anyone can download the file by knowing the real location and name.

What can you do to prevent this? 1- Rename the database file and change the database folder name also reflecting those changes at comersus/includes/settings.asp and inside export scripts (if you have the Power Pack and use exports) 2- If it's possible move the database file to some folder outside public access and relate the file to your store using DSN 3-Add a password to the database folder so if anyone tries to download the file the login screen will appear (Comersus Hosting Service lets you do this since Comersus uses an exclusive mix of Windows and Linux Server) 4- Add a password to the database file from Access and reflect that change to comersus/includes/settings.asp

If you are using SQL Server and mySQL just be sure that your password is not the default and prevent remote DB administration if possible. You may also check with your database vendor for regular patches to security bugs.

**Encrypted information:** Comersus stores sensitive information using RC4 algorithm (or DES if you have purchased Power Pack and enable this feature). If anyone gets a password or credit card directly from the database, he will still have to decrypt that information. The only way to decrypt the information is with the Encryption Key located at settings table. We provide a random encryption setting created at Wizard execution. Consider that all your previous passwords and encrypted data will not be accessible anymore if you change the key. You can use Diagnostics and Tools to reset the password once you have changed the Key in order to grant BackOffice access.

You can also use any other encryption system with Comersus but this will require a customization. Comersus Official Hosting has Third-Party encryption components just in case you need additional security.

**Web Server:** Microsoft IIS had some well known bugs in almost all IIS versions that allow Internet users to view the source code of ASP scripts, escalate or gain control of the web server. As you may imagine this is a dangerous security threat since anyone can view your database location and Encryption Key with access to the source code. Update your web server with the latest patches and subscribe yourself to security lists to be notified about the latest security bugs in the software you are using.

**Logs:** ask your hosting provider about the possibility to view the logs of your FTP server in order to determine if someone else is accessing the files in your web server.

**Passwords:** do not use easy to guess passwords for your database file, FTP server and Comersus admin passwords. Use a combination of letters and numbers and avoid known English dictionary words. Do not write the passwords and change them on a regular basis.

**BackOffice:** Rename BackOffice Folder and use Web Server security to prevent outside access to that folder if possible. The BackOffice will log the last login date so you can verify that nobody uses the BackOffice with your own profile.

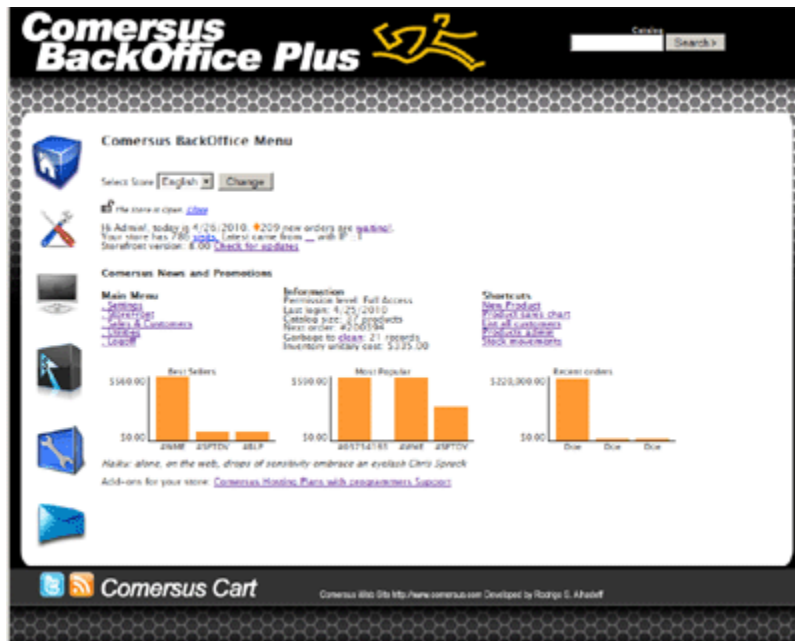
**Credit Card information:** Try to use an online payment gateway since in that case you will get more security validations (CVV2, AVS, etc) and the card number will not be stored in your database. You can always retrieve credit card numbers by using your payment gateway reports.

**Silent Responses:** Rename all Silent Response script names (and links) to avoid the situation where a customer posts an order and then loads in the browser address the Silent Response to change the order status to *paid* without making the payment. Note that this cracking method will not work with some payments like PayPal since they provide additional security rules, but we advise to rename those scripts anyway. Consider also that you will have to set the new script name in the Payment Gateway Control Panel.

**Trojans:** you can implement all security policies explained above but if someone places a Trojan application in your machine, they will probably have access to your files and keystrokes. Avoid the execution of attachments and use an updated Antivirus and IDS such as Black-Ice Defender, Norton Internet Security or Zone-Alarm.

**About Security Check:** you can download Diagnostics and Tools from Comersus Downloads Page. There you can find a Security Check option that will make tests and provide automatic recommendations that could be used as a complement of a manual verification of security conditions.

## About BackOffice Plus



As explained above, the basic control panel provided with Free Distribution Comersus Cart, BackOffice Lite, will help you manage the vital features of your shopping cart. For complete and professional management of all features you will need the advanced control panel, BackOffice Plus.

In the following pages you will find a discussion of all shopping cart features that can only be managed from BackOffice Plus. Even if you don't have this tool, you will find this information useful to learn about all of the shopping cart's capabilities.

# Settings

---

## Chapter

# 3

The file *Comersus/includes/settings.asp* allows you to configure the database location, database type and default email configuration for Error Trap script. All other settings are contained in settings table in the database and you can modify them with BackOffice+ or Lite.

BackOffice Lite and + Programs also have their own settings.asp file located in *Comersus/backoffice+(or Lite)/includes/settings.asp* where you can configure some basic functions of the BackOffice (like demo mode, path for upload, etc)

## StoreFront Basic Settings (comersus/includes/settings.asp)

By editing this file with a text editor you will be able to define an alternate connection string, database type or database location. You can also define Email Settings for Support Error script: these settings are used for outbound Support Error. Email configuration of Advanced Settings is not used for Support Error since those settings are stored into the database and if some error occurs, probably database will not be accessible.

' Alternate connection strings

' SQL Server local or remote IP in SERVER=

```
'pDatabaseConnectionString          =          "Driver={SQL
Server};UID=comersus;password=123456;DATABASE=comersus;SERVER=127.0.0.1"
```

' Jet Oledb connection

```
'pDatabaseConnectionString    =    "Provider=Microsoft.Jet.OLEDB.4.0;"    &    "Data
Source="&server.mappath("../database/comersus.mdb")
```

' DSN connection, you must define the DSN first in your server

```
' pDatabaseConnectionString = "DSN=comersus"
```

```
' DSN less connection
```

```
pDatabaseConnectionString= "Driver={Microsoft Access Driver (*.mdb)};DBQ=" &server.MapPath("../database/comersus.mdb")&"
```

```
' Email Settings for Support Error script (if there's a DB error, this data cannot be retrieved from the DB)
```

```
pSupportErrorEmailFrom = "you@yourDomain.com"
```

```
pSupportErrorSMTP = "smtp.yourDomain.com"
```

```
pSupportErrorEmailComponent= "Jmail" ' options are Jmail, ServerObjectsASPMail1, ServerObjectsASPMail2, PersitsASPMail, CDONTS and BambooSMTP
```

```
pSupportErrorShowDetails= -1
```

## StoreFront Advanced Settings

Using BackOffice you can browse to Settings/Configuration.

From this option you can edit in real time all the advanced settings of the store grouped in several categories.

- **Company Information:** Company or store name and address appear on many shopping cart pages and on most e-mail messages sent to customers. Here you can also specify the phone, fax, zip code, etc
- **StoreFront Behaviour:** *pMaxAddCartQuantity* is the largest quantity your customers will be able to order for one product (i.e. 20 means that they can only order up to 20 units of a certain product). *pMinimumPurchase* is the minimum dollar value of the products added to the shopping cart for your store to accept the order. Orders below the minimum are considered too small and will not be processed. In all cases, customers whose shopping cart contents don't meet one or more of these criteria are notified of the problem during the check out process. *pStoreFrontDemoMode* is an important setting for testing purposes. If you have an error in your store you should switch to demo mode in order to make a debug and try to determine which SQL sentence or script is causing the error. *pOrderPrefix* and *pCustomerPrefix* are used to determine a prefix to be added in the beginning of all automatic numbers for customers and orders. *pIdStore* is used to identify each unique store in a mall or multilanguage environment (stores should be previously defined in stores tables). *pNoStockAvoidAdding* is used to detect if the product has stock. If it doesn't, Add Button and links will disappear for that product. *pShowStockView* is used to show the stock for the products in the storefront. *pUseShippingAddress* is used to enable the link to shipping address form in the checkout process. *pRandomPassword* is used to

enable random password generator for new customers *pAllowNewCustomer* is used to enable new customers form in checkout process; if you don't want new customers to register just change this setting. *pStoreLocation* is very important since it defines the domain and folder where Comersus is installed in the server and this location is used by several scripts to send emails, determine the location of certain files, etc. Don't use http; a valid location is localhost/comersus. *pForceSelectOptionals* is used to check if the customer selects at least one variation of the drop down variations before adding. *pEncryptionPassword* is the encryption string for RC4 algorithm. If you want to change this setting, all your previous passwords and encrypted credit cards will not be recognized. Make sure to change the password before you logout or you will not be able to login again to the BackOffice if you changed the encryption password. *pIndexVisitsCounter* is used to register the visits to your store if they arrive to default.asp script (direct access to categories or other parts of the store will not be added). Sometimes you want to disable this setting for performance reasons since you can also count visits using any Visits Counter provided by the web server. *pUseEncryptedTotal* is used to encrypt the order total before filling an online payment form such as Authorize.net form. *pSendPlainText* is used to send credit card information unencrypted (useful just for testing purposes, don't enable this setting for a real world store). *pItemsShown* is used for the home page table that displays a table filled with products. *pStockQuantityControl* is used to check if there is enough stock in add and recalculate steps. *pZoomItemImage* is used to enable zoomIn and zoomOut buttons.

○ **Optional Features:**

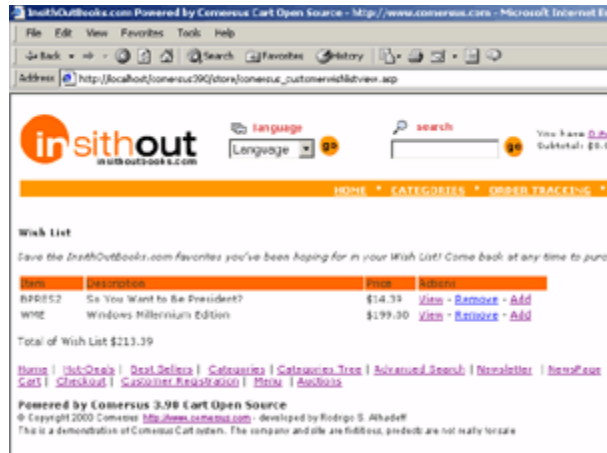
- In settings table there are also settings to enable or disable links to features included in Power Packs. If you have executed the Wizard, that application will set the links automatically according to your Power Pack. Then you have to go to Settings in order to define additional configuration options like *pGetRelatedProductsLimit* (a setting to define how many related products to retrieve), *pProductReviewsAutoActive* (to activate all reviews without BackOffice moderation), etc.

These optional features are only available with Power Packs. You can find more information about Power Packs in the Appendix Section

*Note: The Wish List feature of Comersus allows your customers to place items that they like, but are not ready to buy right at that moment, in an ideal basket from which they can retrieve them at any time. The advantage is that when they are ready to order, they don't need to search for those products again. All they have to do is log into their account, select View Wish List, and add to the shopping cart the products that they are now ready to purchase (see image below).*

*To add a product to their Wish List, users will click on the Add to Wish List button located on every product details page in your store. If the Wish List feature is not active, that button is not displayed.*

*Wish list can also be used to distribute a gift list link.*



*To add products to the Wish List visitors must register with your store. Otherwise Comersus will not remember who they are when they try to retrieve their list.*

## E-mail Settings

Comersus automatically sends your customers e-mail messages under these circumstances:

- When they place an order, to confirm the order contents (this email can be disabled if you only want payment confirmation email)
- When they place an online payment through PayPal, or on-line credit card payments.
- When they forget their login password, to remind them about the password.
- When they win an auction or their bid is surpassed.

The e-mail settings allows you to configure:

- The ***E-Mail component*** is probably the most important setting in this section. This is what tells Comersus the e-mail program that your Web server is using to send e-mail messages. "CDONTS" is the default setting. CDONTS is a script used by a large number of Web hosting providers to allow Web sites to send e-mail messages to their visitors. Check with your Web hosting provider to find out what application is installed on your Web server to handle e-mail messaging. Other popular applications (COM Objects) used for this purpose are: JMAIL, PersitsASPMail, ServerObjectsASPMail and BambooSmtP. Comersus provides a Free Utility named Diagnostics and Tools to identify the components installed automatically.
- **Admin E-mail:** This is typically the address of the person that is managing the store, or "administrator". This address receives order notifications, payment notifications, encrypted credit card payments and auctions notifications.



- **“From” E-mail:** This is the address that is used for all messages and invoices sent automatically from your store to a customer. This address shows up as the “From” address in the message that the customer receives, and it is therefore also the address that replies will be sent to, if the customer decides to reply to a message.
- **SMTP Server.** This is the send mail transfer protocol server. It can be a remote server also.
- **SMTP User and Password.** To avoid SPAM almost all SMTP servers requires now authentication. Load here your SMTP user and password
- **HTML Emails:** With this option enabled, receipt email will be sent in HTML format.
- **Debug Email:** This option is useful to determine the cause of email sending errors since it will display the error description on screen.

## Changing Your Password

To change the login password for your BackOffice+ or to add more administrator profiles select *Settings, Administrators*.

Create a new user or modify an existing one. Note that the admin profile that you are using may not have the permissions to modify other profiles.

If for any reason you cannot login to BackOffice+ you can download and install Free Diagnostics and Tools to create a new user admin.

**Note:** Whoever is in possession of the BackOffice +’s User and Password has access to virtually every aspect of your online store. Make sure that you keep your password in a safe place and that you do not share it with anybody other than those people that you want to have full access to your store.

## Store Terms & Conditions

At checkout time, the customer will have a caption: “You have to agree to the following conditions to make a purchase”. The conditions can be changed from BackOffice+ using this link at Settings Menu.

Note: *If you want to change General Conditions using BackOffice Lite you will have to perform a SQL sentence.*

## SSL Certificate

If you have your own SSL certificate you should be able to load your site using for example <https://www.Your.domain.com/comersus> Comersus is able to redirect customers to SSL at checkout automatically. For this purpose just indicate pOwnSSLCert as true inside settings.

## Currencies

From this option of BackOffice Plus you can create new currencies defining sign, name and conversion factor. If you have the optional Currency Conversion Feature included with some Power Packs your customers will be able to make conversions between currencies in the storefront.

## States and Countries

From this option of BackOffice Plus you can administer the states and countries displayed in your checkout and registration script. If your store only allows purchases from US, you can delete all other countries for example.

## Recaptcha Verification

In the early days of Comersus there was no need to prove that a visitor of the store was human. Then Google came with the excellent idea of one link as one vote and then bot visits trying to post links were flooding all web applications. Originally, we have included a custom text verification schema but the bots today use AI to read, even inside JPG and GIF. For this reason, we have opted to include Recaptcha verification.

To enable Recaptcha, you have to go to <http://www.google.com/recaptcha/whyrecaptcha> and obtain a private and public key. Then load those keys into `pRecaptchaPrivateKey` and `pRecaptchaPublicKey` Finally set `pVerificationCodeEnabled` as true.

That's it. You are protected from bots in all important points of access.

## Screen Messages

From this option of BackOffice Plus you can manage all messages that appear on screen. Real ID is the id provided by the database. Assigned ID is one number assigned by the administrator, if you have a multilanguage store, this ID should be the same for the original string and the translated string. Then you have the file name, which is only used as a reference, the screen message and the store ID (if you have a mall or a multilanguage store)

If you want to add more messages not included by default, you have to post a SQL Sentence to create new records and then you will be able to edit those sentences from the BackOffice Plus.

Tax, Payment and Shipping are covered in special chapters of this guide.

## Multiple Stores

Comersus allows you to use one database and one BackOffice Plus control panel to manage multiple stores. You might need to manage multiple stores if you have:

1. An e-commerce website with multiple languages (this scenario is discussed in Appendix C)
2. An e-commerce website with separate stores for each product line
3. An e-commerce website with separate stores for each supplier
4. An e-commerce website with a local and an international store, each with different pricing, currencies, and payment and shipping options

Comersus supports all these scenarios thanks to its multiple stores features.

Note: remember that, if each of the stores uses Power Pack scripts, you will need to purchase Reseller Kit Hosting Company or Software Integrators Edition, since Power Packs can only be used on one store.

First, create a category tree including all stores. It will typically look like this:

```
Root
Root > Store 1
Root > Store 1 > Books
Root > Store 1 > DVD
Root > Store 2
Root > Store 2 >
Root > Store 2 > VHS
Root > Store 2 > Pens
```

Note that, in this case, the category trees for each store are completely independent from each other. If in your case all stores will share the same categories, you don't have to create separate categories for each.

Then go to Settings, Add Store, and create all stores one by one. Here you will need to indicate the beginning of the category tree for each store. On the same screen you can also choose to clone the catalog, taxes, payment options and shipping options of the existing store. At the end of the procedure the idStore of the new store is displayed. Take note of this value for use in the following step.

If the new store is similar to the existing store, you can clone all parameters. You will still be able to modify them within the new store at a later time.

Once you have created the new store, remember that you will need to switch stores in the BackOffice in order to manage it. Go to the main menu of the BackOffice and select the desired store from the drop down.

Finally, install the store you have created and change the idStore. For this purpose, simply create a new folder such as /comersus2 which will contain the /includes and /store folders (copied from the original /comersus

folder). Then open the file `comersus2/includes/settings.asp` with a text editor and replace the line

```
pIdStore = 1
```

with

```
pIdStore = 2 (where 2 is the ID of the new store)
```

Now you are ready to customize the template of the new store and manage all aspects from the BackOffice.

Remember that the new store is located in the `/comersus2` folder.

Note: the `backOfficePlus` folder should not be copied, since all stores will be managed from the same BackOffice.

## Chapter

# 4

## StoreFront

---

The *StoreFront* menu allows you to add products to your on-line catalog using a form. It also allows you to modify existing products, add product options (e.g. color and size), add or edit product categories, and more. You can also moderate Customer Reviews, Define Discounts, Distribute a Newsletter, add new records to Store News and create Auctions. You can also manage stock, define Related Products and administer suppliers.

### Getting Ready to Add Products

Before you start adding product information to your on-line catalog, it is a good idea to get the product information ready. Here is a list of the things that you can add to your product catalog, along with some comments related to their formats.

- **Product name, SKU, and a description.** The description field supports HTML tags, so you can use the product description that you have already used in another Web page, by copying and pasting the HTML code. If you don't have a formatted product description, just use plain text, as you will be able to format it using BackOffice+ (e.g. bold, italics, bullets, etc.)
- **Pricing information.** You can set 3 prices for each product: List price, retail price and wholesale price. The only one required by Comersus is "retail price", which may or may not coincide with the list price. If it doesn't, the store will show "you save \$XXX" message.
- **Product images.** You can have 5 images for each product.
  - Thumbnail. This is the small image that typically appears on all pages that display more than one product (e.g. search pages, etc.). The size of this image must be **100 x 100 pixels** or less. The supported formats are JPEG and GIF, which are the standard graphic formats acceptable for the Internet.
  - Main Image. This is the image that is displayed on the product details page. The supported formats are JPEG and GIF. Then you can add 3 optional images that customer is able to switch from main image

- 3 optional Images This images can be rotated by the customer to obtain a more detailed view of the item.

**Note:** If you choose JQuery Slider to display images remember that you will need at least 2 images loaded for every product. JQuery Slider is enabled from the pSlider setting. Then you can also configure pSliderWidth and pSliderHeight.

- **Product Categories.** Are your products organized in categories? If not, you may want to consider organizing them in categories before you start adding them to the catalog. Note that Comersus supports multiple subcategories. In other words, you could have "Toys / Babies / Bath Toys" where "Bath Toys" is a subcategory of "Babies", which is a subcategory of "Toys". You can also define an image for each category to make listings more attractive. You can also include an image for each root category, so you will get a good looking categories page.
- **Product Options.** Do your products come in different sizes, colors, etc.? Have those details available as well. In Comersus, they are called *Product Options or Variations*. Since *Comersus 6* you can also define variation images and variation types.

## Adding New Products

*Add Product* adds a new product to the product catalog.

The following is a brief description of the form fields contained on the first page.

Add product

SKU #

Description

Style  Size

Details

Windows Me Boxed. SKU #2439829  
Get this offer today!

Features:

1. Boxed Set
2. Year License
3. Support
- 4.

☐ Edit HTML

Price

List price

Wholesale price for 6000

- **SKU** - Enter the product SKU or Part Number, which typically is a combination of letters and numbers. Note that the database will also automatically add to each product a unique *Item Number*, which is not displayed on this form. The *Item Number* uniquely identifies the product in Comersus' database. The SKU, instead, is your own product identifier.
- **Product Name** - Enter the product name (Max 255 characters).
- **Description** - Enter a description for the product. This is the description that will be displayed to your store visitors when they opt to receive more details on a certain product. For example, if they run a product search, the shopping cart will return N items on the search results page. If they click on "More Details" next to any of the items, they will be shown a page that displays the product description that you are entering here (together with the *general image* and other product information).

**Note:** You can use any **HTML tag** to format the text in this field. For example, you can use the `<b></b>` tag to make a word bold. This also allows you to link to other pages on your Web site, display additional product images, etc.

- **Retail price** - Enter the price you will be charging your retail customers. You can automatically charge wholesale customers a different price (*see B2B prices below*).
- **List price** - Enter the list price for the product. This is an optional, but very useful field. If you enter a price here, then you can use the *Show Savings* feature described below. **Note:** make sure the *list price* is higher than the *on-line price*.
- **B2B (Wholesale) Price:** This is also an optional field. The field defines the price that is displayed to B2B wholesale customers and used to calculate their order totals. You can define which store visitors are wholesale customers under Customers Menu. See the section of this user guide dedicated to that topic for more details. B2B wholesale customers are automatically shown the wholesale price.
- **Special Prices:** Since Comersus 4.00 you can also define special prices for each customer. List the customer from Sales and Customers menu and select Assign Special Prices.
- **Thumbnail image** - Enter the thumbnail image file name and extension. Do not enter any directory path, just the file name (e.g. "myimage.gif"). Comersus assumes that images for the product that you are adding have already been uploaded (or will be uploaded) to your server. All images must be uploaded to the following directory:

[www.yourwebsite.com/Comersus/store/catalog](http://www.yourwebsite.com/Comersus/store/catalog)

If you haven't already uploaded images to your server, you can do so by using Comersus' automatic upload component, accessible by selecting *Upload Images* from the *Products* menu.

To upload images using this component, *Browse* your computer until you locate the file(s). When you are done locating the file(s), click on *Upload* to automatically move them to the right directory on your Web server. You will receive a confirmation message indicating that the upload was successful.

To upload images to your server you can also use any **FTP** program. Many are available in the market, often free of charge. In addition, your Web hosting service provider may have some for you to download as well. For a list of good FTP programs available for download, run a search for "ftp" at <http://www.download.com>

- **Image** - Enter the file name for the product's general image. Make sure that the image has been uploaded to your server, as described above.
- **Category 1, 2 and 3** - To give you maximum flexibility, Comersus allows you to assign a product to multiple categories. For example, a gift shop could have the same poster appear under "Posters" (first category) and under "Home Décor" (second category). To manage categories and subcategories, see [Create and Modify Product Categories](#). You can assign the same product to unlimited using unlimited categories assignment link in Backoffice Plus. By default it comes with 3 categories since it is unusual to assign one product to more than 3 categories.
- **Active** - All products are active by default. If you uncheck this option, the product becomes inactive, and will not be shown in your store. The product will stop showing up in any search and/or catalog page. Make sure that you have not placed hard-coded links to this particular product on any other page of your Web site.
- **Show In Home and Clearance (Hot Deal)** - You can set any item in your product catalog as a *Show In Home* or *Hot Deal*. This gives you the ability to promote certain products in your on-line store. All *Hot Deals* are displayed in a special page that you can link to from any other page on your Web site. For example, many Web stores link to the *Specials* page right from their home page. Show in Home Products will be shown at `comersus_dynamicindex.asp`
- **Weight** - Enter the product's weight, in pounds. The weight can be used for dynamically calculating shipping charges. For information about configuring shipping options see [Shipping Options](#). If you set the weight to zero, then customers will not be prompted to select a shipping option during the check out process. This can help you both with items that you do not ship and with those for which you want to offer free shipping.
- **Form Quantity** - You can define the quantity to be allowed in the drop down quantity selection of viewitem page.
- **Availability Time** in the viewitem page you can show the usual Delivering Time for this product.
- **Personalization-** In Backoffice Plus, if you turn on this setting, the cart will allow the customer to enter a personalization string before purchasing the product. Ideal for engraving, etc.
- **MAP (Minimum Advertised Price)** - With this option, the item will not display the price, unless the customer adds the item to the shopping cart. MAP should be used when you have MAP contracts with your distributors or suppliers.
- **Digital Goods** - You can define a download link, a serial code or any other digital good text to be distributed automatically with Silent Response from payment gateways or manual order approval. If you have the Power Pack, the digital goods file location can be obfuscated. If you want to obfuscate the file location, you should select one `pDownloadComponent`. Entering NONE in this field will use File System Object, entering ASPUPLOAD or STRONGCUBE will use these components to generate a



download stream directly to the customer. Note: if you use StrongCube place your files into comersus/store/digitalGoods folder (a new folder created inside /store)

- **User Fields** – If you have configured label user fields pProductCustomField1, pProductCustomField2 or pProductCustomField3 in Settings you will be able to enter fields contents here. Example: you can enter Author inside pProductCustomField1, then you will get an *author* textbox field

Click on the *Add* button to add the product to your catalog. A confirmation page will be displayed. Then you can opt to add *Options* to your product (discussed in the next section), modify the stock, upload an image, modify it, add another product, or return to the product management window.

After adding the product in BackOffice+ you can distribute a Newsletter to all the customers with the information about the product just added.

## Product variations

Comersus allows you to add sets of options to each product. These are additional purchasing options that you are offering to your customers on certain products. For example, a product may be available in different sizes, colors, etc. Customers select these options (if any) on the product details page before adding a product to the shopping cart.

Comersus gives you a great deal of flexibility in creating and managing product options:

- You can add an option to just one product in your catalog or all of them at the same time.
- You have the ability to associate an additional fee with each product option. The fee is automatically added to the product's base price when the product is added to the shopping cart. So an oak frame may cost an additional \$20 for a certain painting, but \$30 for a larger painting. Different sizes on a t-shirt, instead, may not add any amount to the base price.
- With BackOffice Plus you can define the variation type like drop down, checkbox or radiobutton. You can set an additional image for the option that will be displayed into product details page.

Before you add options to your products, take a look at how they are organized in your store's database. Product options work as follows:

- **Option Groups** – Option groups define the main attribute (size, color, weight, etc.).
- **Options** – Options are the choices within that attribute (small, medium, large, etc.). So to assign a product a certain set of additional options (e.g. three sizes), you will first associate the product with an option group (e.g. size), then select three options to add to that group (e.g. small, medium, and large).

To create options and option groups, follow the steps outlined below.

**Create a new *Option Group* at StoreFront/Products/Option Groups Menu** by typing the group name in the *Group Name* field and then clicking on the *Create New Option Group* button. For

example, "color" or "size" could be the name of a new option group. The new entry will not appear in the list.

- From the *StoreFront/Products* menu, select *Modify OptionGroups to Products Assignments*. The window that is displayed lists the current option groups for the selected product.

## Modifying & Deleting Products

To modify an existing product, click on *Modify Products*. You can locate the product that needs to be modified by searching for it, or by viewing a complete list of the products per category saved in your product catalog. Searches are conducted on the product's name and description.

If you select *list per category*, you will be shown n products per page in order to locate some specific product.

In both cases (search or list all), the results page will list the product SKU, product name, and the following links:

- **Modify** - Click on the *Modify* button to modify the product properties. The form that is loaded is very similar to the [Add New Product](#) form. Refer to that section of this document for more information on each form field.
- **Delete** - Click on the *Delete* button to delete the product from the database. *Note: if you want to prevent the product from being displayed on your on-line store, but you want to keep it in the database, make the product inactive, do not delete it. This allows you to temporarily prevent people from buying an item, but it gives you the ability to make the item available for sale again at any time. Instead, deleted products are permanently removed from the product catalog. Consider that sold products cannot be deleted before deleting order first for integrity reasons.*

## YouTube Embedded Videos

You can add embedded videos inside item details to describe your items. To enable YouTube, go to BackOffice Plus, add/edit product and insert the Video ID inside "YouTubeV" field. The video ID can be obtained from YouTube URL. Example: <http://www.youtube.com/watch?v=11555> In this case the Video ID is 11555 You can use the tool to automatically search for youTube videos included in the BackOffice.

## Mp3 Sample Music

Now you can add embedded mp3 sample inside item details. To enable Mp3 Sample, go to BackOffice, settings, then set pProductCustomField1, 2 or 3 as "mp3sample" Finally go to add or edit one product and enter the mp3 file name inside mp3sample field. The mp3 song must be placed into store/mp3player folder

## Multilanguage Support

From Comersus 6, multilanguage is implemented using a multiple store schema. If you want your store to be in english and spanish, you are going to install 2 storefronts, one of them is the main

Comersus/store (english)

Comersus/spanish

From BackOffice Plus you have to create the additional store and get the IDStore. That idStore should be loaded into comersus/spanish/includes/settings.asp

Then you have to define settings for the new store and translate all screenMessages (or download the translation if it's available)

From BackOffice Plus, main menu you can define which store are you managing (english or spanish) Then you can define products, settings, etc for every store.

Regarding categories, you have to use the following structure

Root

Root/English

Root/Spanish

Root/English/Books...

Root/Spanish/Libros

And then load in store management the ID of the starting category.

Regarding main layout (header and footer) you have to translate and use specific images for every language.

Then you can use a main store page to select the language or redirect the customer to the appropriate store according to USER IP or Browser language.

## Creating and Modifying Product Categories

Product categories allow you to organize your product catalog and make it easier for customers to browse through your on-line store. With Comersus you can create multiple categories and subcategories, and assign a product to up to three categories or subcategories. In addition, you can create up to four subcategory levels in the category tree. For example: "greeting cards" (category), "business" (subcategory of "greeting cards"), "thank you cards" (subcategory of "business"), "classic" (subcategory of "thank you cards"), etc.

Note the following definitions to understand how to create a new category:

- **Root.** This is the top level in the category tree. When you create a new category, you will set it as a *root* category unless you want it to be a subcategory of another category.
- **Categories.** You can have unlimited categories.

- **Parent Category.** This is the category to which a subcategory belongs. When you create a new subcategory, select the category that it belongs to from the *Parent Category* drop down menu. Note that parent categories cannot contain products. Their subcategories can, unless you want them to also be parent categories. Therefore, you will not be able to select a category as a parent category if it contains products.
- **Subcategories.** The process of creating a subcategory is the same as creating a category. The only difference is that you will have to specify which parent category or parent subcategory this subcategory belongs to. Comersus supports up to four category levels.

**To create a new category or subcategory:**

- Click on *StoreFront / Products / Add Category*.
- Enter a category *Description*. This is the category name that will be displayed in your store when people browse the store by category, together with the category image.
- Specify which category this subcategory belongs to from the drop-down menu. If this is a top level category (i.e. this is not a subcategory of any other category), select *Root* from the drop-down menu. If a category does not appear in the *Parent Category* drop-down menu the reason is that either the category has products assigned to it or it is the lowest level of category that Comersus supports (i.e. it cannot have subcategories).
- Click *Save* to add the category to your store. You may assign products to this category when adding a new product, by using the *Modify Products* feature under *Storefront / Products*.

**To modify an existing category or subcategory:**

- Click on *Storefront / Products / Categories / Modify*
- A list of all existing categories and subcategories is displayed. Subcategories are displayed below the parent category to which they belong.
- Select the category that you would like to modify by clicking on *Modify/Delete* on the right side. You will be shown a window identical to the *Add New Category* window discussed earlier in this section.
  - To turn a category into a subcategory, select what will become its parent category from the drop down menu and click *Modify*.
  - To turn a subcategory into a top level category, select *Root* from the drop down menu and click *Modify*
  - To delete a category, click on the *Delete* button. Note that to be able to delete a category, it must not contain any subcategories, and no products can be assigned to it. You will first have to delete its subcategories (or assign them to another category or subcategory), and delete the products that belong to it (or assign them to another category).

## Managing Stock

Comersus automatically keeps inventory levels updated for you. When you add a new product to your product catalog, you have the ability to specify the initial inventory level. As orders are

submitted and paid or marked as paid for a particular product, the inventory level for that product is adjusted accordingly.

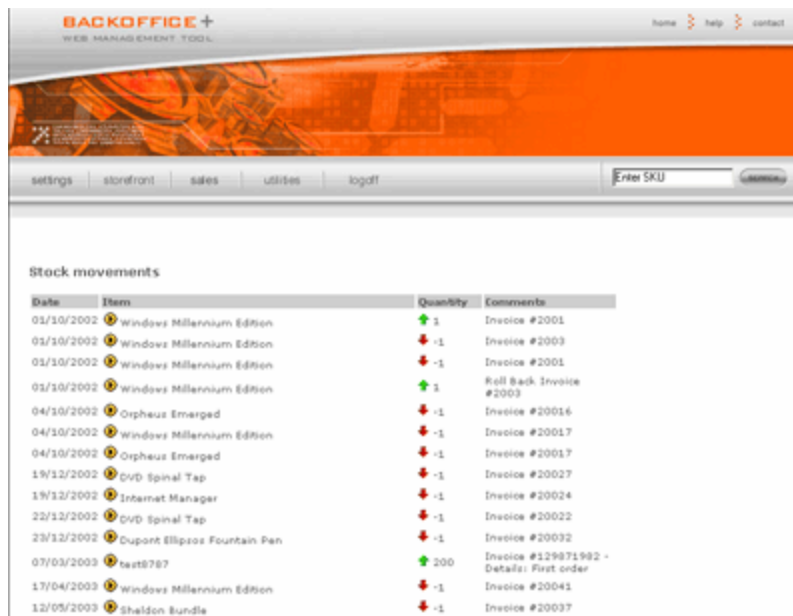
Since you may receive new shipments of products, or produce new ones, etc. you need to be able to change the inventory settings at any time. To view and modify inventory levels, select *Storefront / Products / Stock main* menu.

You will be shown several choices to list, view charts and modify the stock of all products in your product catalog.

To adjust the stock for some product click on Modify Stock.

Regarding the adjustment of stock at purchase time, you have to consider that you should not update stock with each order since it's very common for payments to be rejected and for online orders to remain uncompleted. It's a better schema to update stock only after payment. With Comersus you can update stock using the Silent Response of your payment gateway. You can also update stock for off line payment orders using BackOffice+ by marking one order as paid, the stock and sales statistics of that product will be updated. If you get a chargeback for one payment you can make a RollBack for the order using the BackOffice and the stock will be updated.

*Note: you can also modify the stock value for a certain product from Modify Product menu but remember that Comersus will not maintain records of this change. We advise always using Modify Stock Option included with BackOffice Plus.*



The screenshot shows the BackOffice+ web management tool interface. At the top, there is a navigation bar with links for 'home', 'help', and 'contact'. Below this is a main menu with 'settings', 'storefront', 'sales', 'utilities', and 'logout'. A search bar labeled 'Enter SKU' is also present. The main content area displays a table titled 'Stock movements' with columns for 'Date', 'Item', 'Quantity', and 'Comments'. The table lists various stock transactions, including purchases and sales of products like Windows Millennium Edition, Orpheus Emerged, DVD Spinal Tap, Internet Manager, and Dupont Ellippos Fountain Pen, as well as a 'test8787' item.

Date	Item	Quantity	Comments
01/10/2002	Windows Millennium Edition	1	Invoice #2001
01/10/2002	Windows Millennium Edition	-1	Invoice #2003
01/10/2002	Windows Millennium Edition	-1	Invoice #2001
01/10/2002	Windows Millennium Edition	1	Roll Back Invoice #2003
04/10/2002	Orpheus Emerged	-1	Invoice #20016
04/10/2002	Windows Millennium Edition	-1	Invoice #20017
04/10/2002	Orpheus Emerged	-1	Invoice #20017
19/12/2002	DVD Spinal Tap	-1	Invoice #20027
19/12/2002	Internet Manager	-1	Invoice #20024
22/12/2002	DVD Spinal Tap	-1	Invoice #20022
23/12/2002	Dupont Ellippos Fountain Pen	-1	Invoice #20032
07/03/2003	test8787	200	Invoice #129871982 - Details: First order
17/04/2003	Windows Millennium Edition	-1	Invoice #20041
12/05/2003	Sheldon Bundle	-1	Invoice #20037

## BackOrder Stock

If you want to enable BackOrder, you have to set `pUnderStockBehavior=backorder`. If this option is enabled and you don't have stock of one specific item, a registered customer can create a BackOrder request. Then, when you purchase new stock of that item, the customer is automatically notified so he can post the order.

## Advanced Stock Calculations

After adding a new product you can enter additional optional fields that will produce advanced stock calculations for reporting purposes.

*Note: for existing products you can click on Set Stock Levels to enter this information.*

Those fields are:

Security Stock: the minimum stock level that is allowed for that product

Order Cost: global costs involved in re-ordering that product (shipping, handling, etc)

Delay: days to get that product

Minimum Order: minimum order for that product as it was specified by the supplier.

If you have loaded all this information and if you have at least three months of historic sales in your database you can use the Security Stock Report (Sales & Customers/Reports).

This report will iterate through the entire catalogue and it will show detailed advanced information about inventory, including:

- Current Stock
- A flag to identify if the item is below security level
- Units to reach Security Level
- Recent sales of this product
- Simple estimation for the following month
- Re-order recommendation including costs and delay times
- Direct link to Supplier Information

## Related Products

You can define related products for one item. This is a great marketing tool since it allows you to create a Cross Selling Schema. At product details page you can get related products and show them to the customer so they can decide to purchase those products also. For example: if the customer purchases a radio you can offer batteries as related products.

Related Products are managed from StoreFront/Products/RelatedProducts

## Bundle Products

A Bundle Product is a product made with other products. You may want to use this feature in the following scenario: a clothing company with T-Shirts in different sizes, colors and models with the requirement of maintaining stock for each variation.

You can also use one product with Optionals but in this case you cannot maintain stock for each variation, you cannot run Sales Reports differentiated by variation and you cannot use different images for each variation.

All these problems are now solved by Bundle Products.

Instructions:

1. Create the main product in the usual way. Consider that the description and details should be generic to include every product of the bundle (like T-Shirt in several sizes and colors). Price and stock of this product will not be used, so you can leave them blank.
2. Create each product contained in this Bundle. Here you have to load price and stock.
3. From Products Menu, Select Main Bundle, select the product just created.
4. Then click on the Assign Products link.
5. Select each one of the products contained in this Bundle.

Each one of the products contained in the Bundle will not appear in the store as individual products (they will not be listed in Searches and Listings). Only the main Bundle Product will appear there. When you click on the details page for the Main Bundle, you will get a compound page with each one of the products contained, the stock, price, images and links to add to the cart.

## Recurring Items

Since Comersus v8 you can define certain items as recurring and the recurring period in days. When a recurring item is added to the cart, no other items can be added to the cart unless they are also recurring and they have the same recurring period. The reason for this is that recurring items will produce recurring orders. For example: if you sell a hosting plan at \$10/month, each month the order will be created again. To define an item as recurring just click the recurring checkbox and setup your recurring period at add/modify items for BackOffice Plus.

## Subscription Areas

Since Comersus 8.10 you can sell access to subscription areas. This feature is ideal to sell paid content that can be modified or increased during active subscription. You can also sell magazines, newspapers and any information in HTML format including images, videos and links.

To create a subscription area just go to BackOffice Plus, Storefront, Products, Add a new subscription product. Then load Area Name (Example: "My Custom Magazine" or "Papers about e-Commerce") You can also insert a description about the area (it will be presented to customers in the storefront), images and the days of the subscription. From the same screen you can enter date, title and content (in HTML format) for 3 items. Afterwards, from modify subscription product you can add as many contents as you require.

The customer will be able to browse and purchase your subscription area products. After payment and during the period specified, they will have access to the contents purchased. If you want to add a new content or modify an existing one, they will obtain direct access to those modifications.

When the subscription is expired, customers can purchase a new subscription from the storefront.

## **Rental Products**

If you want to rent rooms, DVDs, CDs, etc you have to specify that the item is a rental product. In this case the product cannot be added directly to the cart. The customer will have to select from/until dates. The selection will be compared with current reservations and, if the period is not reserved, the item can be added to the cart. The price will be calculated as item price \* number of days.

To simplify user selection you can enable Java calendar from BackOffice/Settings/Configuration. In this case two calendars will appear in the screen to select from/until.

Note that current reservations will not be saved until the payment is made and a silent response is posted back to the cart, or until the administrator marks the order as paid.

Rental products cannot be recalculated inside the cart since the quantity is determined directly using the period provided.



### Add rental product

SKU #

Room Title

Room Details

Night price Weekday \$  Weekend \$

## Hotel/Hostel Products

Since Comersus v9 you can also define certain items as Hotel/Hostel.

For that purpose first of all setup pHotelRentals as true, then go to BackOffice Plus and create a new Hotel/Hosted product. Please note that pHotelRentals is a global setting and you cannot mix regular rentals with hotel/hostel rentals. The main difference in this case is that you will use checkin, checkout dates (checkout is not considered as a reserved day)

In this case, you can define different prices for weekdays and weekends.

## Compare prices with Amazon

With this feature enabled, Comersus is able to perform a real time comparison with Amazon.com's catalogue. If your price is lower, the cart will display the message "Better price than Amazon" and a link so the customer is able to verify that information.

*Note: This feature is available only for Books at this time. The script needed for this function is included in Power Pack.*

To configure Compare with Amazon, go to the Amazon site and get a Token, then go to "Your Web Services Account" and get the Subscription Id or Access Key Id. Enter the token into pAmazonDevKey and the Subscription ID into pAmazonAssociateKey. Then enable pCompareWithAmazon setting.

Edit all the books in your store and enter the ISBN inside Comersus sku field. Then you can load the details page for a specific item and show to final customers if your prices are lower than Amazon prices.

## Suppliers

You can manage suppliers from StoreFront/Products/Suppliers menu. There you can add and modify suppliers and you can also view a Report of products ordered by Supplier and a chart of product quantities per supplier.

Suppliers are important since Comersus can also send email notifications to suppliers when stock is below a certain value. You can make an automatic procedure of new orders with your suppliers using Comersus.

Note that this Supplier Notification feature is originated from Silent Response notifications of Payment Gateways or from BackOffice+ (changing order status to paid).

## Moderating Reviews

You can moderate customer Reviews from the BackOffice. Reviews are not activated by default in order to avoid rude or offensive messages. Then you can login into the BackOffice and delete or activate Reviews.

## Newsletter

From this option you can distribute a Newsletter to your users. As an incentive, the Newsletter Package may be configured to distribute Discount Certificates so you will get a lot of subscribers to your Newsletter quickly.

From this option you can distribute to Regular Retail/Wholesale Customers or to the users subscribed to the Newsletter. You can define From, Email, Subject and Body.

By default, Newsletter emails are text only emails but you can develop a customization to allow HTML emails also.

*Discounts are explained in a special Discounts and Promotions chapter.*

## News Page

From this option you can add news about the store, such as promotions and other information related to your store. You can combine manual news with autogenerated news. With autogenerated news, the store will create news every time you modify the catalog and every time a customer posts a new review. To enable autogenerated news, turn on the pAutogenerateNews setting.

## Auctions

With Comersus you can define Auctions using your standard catalog. You can define an auction name, the valid period, the starting and ending price, the customer bid increment and the auction customer type (Retail/Wholesale).

Using BackOffice you can view current offers, delete bids, change the ending time, etc.

When you create a new Auction, your customers will see a message on the product details page: “Auctions available for this product”.

Only registered customers can bid for auctions. If a customer surpasses someone else’s bid, the previous customer will receive a notification of bid surpassed.

If a customer wins the auction, they will receive by email a discount certificate calculated automatically with the following rule:

$\text{Discount Amount} = \text{Price (Retail or Wholesale)} - \text{Last Offer}$

At a later time, the customer may return to the store and post a new order with the discount certificate won in the auction.

The auction could be finished due to a bid equal to final price or due to final date reached. Final date is computed each time a user views an auction. If you need another method you can execute at regular intervals the script `comersus_optAuctionExpirationCheck.asp` using WSH or any other facility provided by the web server.

## Wish List

With Comersus, customers can save certain items in their Wish List. They will obtain a private link to distribute the Wish List to their friends. Any visitor of the Wish List can place an order for Wish List products. In this case the destination address will be automatically loaded with Wish List owner address and it cannot be modified. After placing an order the item will be removed from the Wish List.

To enable the Wish List feature just go to BackOffice/Settings/Configuration and change `pWishList` to `-1`.

## Google Ad-Sense

You can earn money by showing ads in your site. Comersus is compatible with Google Ad-Sense. A dynamic Ad-Sense banner will appear in certain parts of the store if you configure this feature.

Instructions:

1. Sign up and login into your Google Ad-Sense account
2. Go to My Account, Property Information

3. Retrieve your ad client code in the second line, example: pub-1234296487474744 (remove ca- from the code)
4. Enter that code inside BackOffice/Settings/Configuration pAdSenseClient key
5. If you want your ads to appear in the header set pAdSenseType as permanent, otherwise set pAdSenseType as confirmation and the ads will only appear in order confirmation page

*Note: Comersus may replace Ad Sense ID in up to 10% of the Ads displayed. You can remove this replacement by editing the source code of the related scripts.*

## RSS Feed Icon

Your Comersus store is able to publish information on new items released every day in RSS format.

1. Go to BackOffice/Settings/Configuration and enable pRssFeedServer (switch to -1)
2. In the store home, a link will appear with the information about the RSS feed

To test the RSS Feed, open your RSS client and enter the URL <http://YourStoreDomain/comersus/xml/news.asp>

The store also maintain one XML feed about catalog news, just in case you want to share catalog information with other applications. The URL is <http://YourStoreDomain/comersus/xml/products.asp>

*Note: you have to enter a new product in the BackOffice+ to enable the feed for every day*

## Facebook

Now you can register your company at Facebook and insert your Facebook page in settings. The footer of your store (if you are using Comersus 9 default template) will display an icon with direct access to your company Facebook page.

1. Register your company at facebook.com
2. Go to BackOffice/Settings/Configuration and set your Facebook page link at pFacebookLink

You can also setup a Facebook Like button by setting pFacebookLikeButton as true (-1)

## Twitter

If you are updating your status in Twitter now you can display an icon in the footer with direct access to your Twitter account in order to get more followers.

1. Go to BackOffice/Settings/Configuration and set your Twitter link at pTwitterLink  
Example: <http://www.twitter.com/ComersusForum>

You can also setup a Twitter Share button at Item detail view by setting `pTwitterButton` as true (-1)

## Chapter

# 5

### Donation Items

To define an item as a Donation:

1. Create a new item with price \$1 and then mark the item as a donation with the checkbox

The store will present a special donation page for that item with the textbox to specify the amount.

## Discounts and Promotions

---

Managing an on-line store is no different than running a retail shop. Through special promotions and discounts you can increase sales for certain items and draw your customers' attention to specific products. Comersus gives you the ability to easily set up a variety of promotions and discounts. First, we'll look at how Comersus can help you automatically create "Hot Deals" and "Show in Home" items. Then, we'll focus on product discounts.

### Specials and Featured Items

Comersus allows you to increase the visibility of certain products in your on-line store in two ways: by creating *Hot Deals* and by setting certain products as *Show in Home* like featured items.

### Discount by Code

Comersus allows you to set a variety of discounts. We will start by describing the *Discount by Code*. This discount works as follows:

- When you create a discount, you will assign a code to it.

- Then, you will notify your customers about it (through e-mail, your Web site, flyers, advertising, or any other way).
- When customers visit your on-line store, they will add products to their shopping cart as usual. No discount will be shown at that time. Upon check out, they will be prompted to enter the discount code, if they have one. The order verification page will display the savings.

To create a *Discount by Code*, select that link from the Storefront / Discounts menu. A list of existing discounts will be displayed. To create a new *Discount by Code*, click on *Add new discount*. To edit an existing discount, click on the *Modify* button. To delete an existing discount, click on the *Delete* button.

To create a new discount, fill out the form shown below and click on *Save*. The following is a brief description of the form fields and how they affect your customers' orders.

- **Description.** Enter a description for this discount, e.g. "Thanksgiving Sale".
- **Price Discount.** If you wish to set the discount as a flat dollar amount, enter it here, without the dollar sign. For example, you could give your customers \$10 off the total of an order. This type of discount is often associated to a minimum purchase amount, which you can specify below under *Order Amount*.
- **Percent Discount.** If you wish to set the discount as a percentage of the order total, enter the percentage value here, without the % sign.
- **Active.** To disable or enable a discount, use this option. This allows you to create a discount code, but use it at a later point.
- **One Time.** If you want to allow your customers to be able to only use the discount code once, make sure this option is checked. For example, this is typically the case with Gift Certificates: once a customer uses the gift certificate, the same customer cannot use it again.
- **Discount Parameters.** These parameters limit the applicability of the discount. Note that you do not need to specify any of these parameters, unless you want to.
  - **Quantity.** You can limit the validity of the discount to orders that fall within a certain quantity range (e.g. higher than 3, or between 5 and 10, etc.).
  - **Weight.** Same as for quantity, but calculated on the total weight of the order.
  - **Order Amount.** Here the parameter is the total order amount. Typically, you would set a minimum dollar amount for the purchase and any order under the minimum dollar amount would not receive the discount.
- **Discount Code.** Enter the code that your customers must use to obtain the discount. The code is entered by customers on the checkout page.

*Discounts by Code* allows you to implement a variety of scenarios, such as Coupons, Gift Certificates, Corporate Discounts, etc. For example:

- You can send a \$10 **Gift Certificate** to all customers that have purchased more than \$100 in the last year to encourage them to purchase again. You can obtain the list of

customers that meet that requirement from the *Reports* module. Then you would create a \$10 discount, with expiration after the first use, generate a code, and e-mail it to them.

- You could reward customers that spend more than \$50 at your store by granting them a **10% discount** on the purchase. The discount code in this scenario could be advertised right on your store's home page to motivate customers to place orders that exceed the amount set in the discount settings.
- **Corporate Discount.** Everyone that works at Company X gets 10% off. You could mail a discount certificate to the Human Resources department of that company and ask them to let all the employees know about it.
- **Repeat Customers.** You make the discount code part of the confirmation e-mail that is sent to your customers (after their order is submitted), advertising that they'll receive \$10 off the next order from your store.

## Discount by Quantity

Comersus allows you to associate tiered prices with any of your products. In other words, you can charge your customers different prices for different quantity levels. You can create unlimited discounts levels for each product in your product catalog.

To apply quantity-based discounts to a product, select *Storefront / Discounts / Add Discount Per Quantity* from the navigation menu. Next, locate the product that you would like to apply quantity discounts to.

To modify previously created discounts you can list all discounts per quantity at once from the listing option.

The quantity discount that will be applied to the product should be a dollar amount off the "on-line price" (e.g. \$10 off the on-line price)

Therefore, first select the type of discount that you would like to apply. Then, enter the "from" and "to" quantity values. Finally, specify the discount value, for retail and/or for wholesale customers.

This feature gives you the ability to charge a lower price as the quantities go up, both with your retail and wholesale customers. The right price is automatically calculated when the product is added to the shopping cart.

### Example - Dollar Amount

Let's assume that you have an on-line wine store and that you sell a certain bottle of wine for \$20 (the *on-line price*). You may want to reward customers that buy the wine in large quantity. So you could set a dollar amount discount of \$1 for people that buy from 5 to 10 bottles, \$2 for customers that buy from 11 to 25 bottles, and so on. Let's also assume that your resellers buy the same wine at a wholesale price of \$14 per bottle. You could give them a \$0.50 discount if they buy from 5 to 10 bottles, \$1.50 if they buy from 11 to 25 bottles, and so on.

## Discount per customer (special prices)

You can also define a special price for certain products and certain customers. List the customer, then click on Assign Special Price. The customer should authenticate in order to obtain the special price.

Special prices override Wholesale and Retail prices.

## Newsletter, Offer Box and Auctions

There are other packages that create automatic discounts. 1- Newsletter: to encourage the email subscription the Newsletter Package can be configured to generate discount codes automatically. 2- Offer Box: this treasure box appears when the customer is logged in, then it will rotate Hot Deals with a predefined discount percentage and finally it will create a discount code valid for selected products. 3- Auctions: when a customer wins an Auction they will receive by email a discount code to be used.

## Discount Clockdown

Price \$15.00

WholesalePrice: \$12.00  
List price \$20.00 ~ You save \$5.00

Get this item with 10% off **Sorry, countdown discount expired!**

If you want to increase the visits/sale ratio, it is good to enable this feature. Go to BackOffice, Settings and setup pDiscountClockMinutes (countdown minutes) and pDiscountClockPercentage (percentage to be discounted for the item visited) Customers will obtain a real time countdown informing about a percentage discount valid for the item being visited. Please note that discount code assigned by this utility cannot be combined with regular discount codes.



# Shipping Options

---

## Chapter

# 6

**C**omersus allows you to set flexible shipping options by dynamically connecting to the following shipping providers: UPS, US Postal Service, FedEx , DHL and Canada Post. Shipping costs are calculated in real time based on the shipping address and the order weight. You can also set shipping using dynamic rules depending on customer cart contents and delivery region. The shipping options you define will be available to your customers during the checkout process.

### Non Real Time Shipping Options

To configure non-real time shipping options, click on *Settings / Shipping* on the navigation menu.

You should create a shipping zone first. A shipping zone is a group of customer destinations. An example of a shipping zone could be:

Shipping Zone Name: Miami Airport

Shipping Zone Content: 33142, FL, USA and 33172, FL, USA (you can set any combination of zip, state and country)

Then you can assign a shipment method to that zone. An example could be:

Shipping Method: UPS Ground, Shipping Zone: Miami Airport, Shipping Amount \$5.00

For each Shipping Method you can define customer types (Retail, Wholesale, etc.)

### Real Time Shipping (UPS, USPS, Canada Post, Fedex)

To configure Real Time shipping options you will need Power Pack Premium installed. Then you will need to configure Real Time Shipping in the Configuration section of your BackOffice in order to indicate that you will use Real Time Shipping.

You cannot mix off line shipping and online shipping. Only one method can be used. And you cannot mix two or more companies since your store has to connect with a remote server to get real time quotes and with more than one server it will take a lot of time to retrieve quotes.

*Note: you can request a customization if you need the ability to mix Real Time Quotation from different companies.*

The shipping costs shown are dynamically calculated based on the total weight of the order and the shipping address provided by the customer. You have to verify that your address is correct since the quoting will be calculated taking your company address as the origin of the delivery.

**UPS instructions:** 1- Sign up at [www.ups.com](http://www.ups.com) and get a user and license for online tools 1- Select this method in pRealTimeShipping setting and enter UPS user and XML Access key inside pUpsLicense and pUpsUser setting keys. 2- Make sure that all your products have weight defined in lbs 3- Consider that some UPS services have a limit of 150lbs 5- If you get a huge shipping amount try to change pChangeDecimalPoint in Configuration to reformat the value obtained. 6- Set pXmlHTTPComponent using your web hosting XML component (usually Microsoft.XMLHTTP)

**USPS instructions:** 1- Register at <http://www.shippingapis.com> and ask the switch to production server 2- Use pounds as weight unit for all the products 3- Define pUSPSDefaultFee just in case your server cannot temporarily retrieve quotes from USPS 4- Ask USPS about min/max weights for each service type 5- Enter your USPS user in BackOffice/Settings pUSPSUser key 6- Set pRealTimeShipping as USPS 7- Set pXmlHTTPComponent using your web hosting XML component (usually Microsoft.XMLHTTP)

**Canada Post instructions:** 1- Register at <http://www.canadapost.ca> to obtain a merchant ID and password and request the production server configuration for your account. 2- Open comersus\_opCheckoutCaShipment.asp with a text editor and enter your merchant inside pRealTimeCanadaMerchant variable 3- Open BackOffice Configuration and set Real Time Shipping to CA 4- Make sure that all your product weights are expressed in KG and that your company Zip is correct. 5- Set pXmlHTTPComponent using your web hosting XML component (usually Microsoft.XMLHTTP)

**Fedex instructions:** 1. Register at [www.fedex.com](http://www.fedex.com). 2. Get your Meter Number at <http://www.meternumber.com> or [http://www.sellwholesaleproducts.com/online\\_demo/Qrequest\\_meter\\_number.htm](http://www.sellwholesaleproducts.com/online_demo/Qrequest_meter_number.htm) 2. Go to BackOffice, Configuration and enter your Fedex Meter Number into pFedexMeterNumber 3. Configure also carrier code, drop off type, packaging and handling percentage 4. Set pRealTimeShipping as Fedex

## InterShipper (Mix UPS, USPS, Fedex and DHL quotes)

Comersus is also compatible with InterShipper Service. You can sign up for this service at

<https://www.intershipper.com/Shipping/Intershipper/Website/MainPage.jsp?Page=Signup1&IntershipperID=26637>

There are pros and cons if you decide to use InterShipper. Pros: you can mix different shipment companies (DHL, UPS, etc) without losing performance in the quoting procedure. Cons: you have to pay for this middle company service, while you don't have to pay if you are using the Real Time forms directly connected with each shipment company.

Instructions for InterShipper:

1. Sing up for the service.

2. Load your InterShipper ID and password at pIsUsername and pIsPassword fields of Comersus Configuration.

## Chapter 7

3. Copy the script comersus\_optRealTimeIntershipper.asp into Comersus/store folder (and make sure that you have the Power Pack that includes this shipment form).

### Bypassing Shipping Calculations

If you sell software, music or services you don't need shipping calculations. Comersus includes a setting to completely bypass shipping related screens.

Go to BackOffice/Settings/Configuration and change pByPassShipping to -1

### Volume Calculation

Comersus is able to calculate the volume of the shipping package using the following method:

1. Consider the maximum height
2. Consider the maximum length
3. Sum the width of each package
4. Add an inter-width value

This method is not the best calculation but it will provide an approximate volume to make more advanced shipping calculations than if you only have the weight of the package.

The volume will be shown inside order details of BackOffice+ and it can be passed to online shipping calculations.

### Payment Options

The *Payment Options* module allows you to define how customers will be able to pay for an order. You can offer one or more payment options. Comersus allows you to define a variety of real time and non-real time payment methods. Real time payment methods

(e.g. credit card) lead to monetary transactions that are processed immediately: if the transaction goes through successfully (e.g. the credit card is approved), then the order is processed; otherwise the customer is asked to provide different billing information. Non-real time payment methods (e.g. COD - cash on delivery) lead to transactions that are processed at a later time. The order is processed immediately, but money is collected later.

With Comersus you can accept **credit cards** on your store by setting up either a real time or a non-real time payment option. The following is a brief overview about real time credit card processing on the Internet.

## About Real Time Credit Card Processing

When credit cards are processed in real time on the Internet, credit card information provided by the customer during the checkout process is typically passed to a service called "payment gateway". Payment gateways connect the online store with a credit card processor, on one side, and with your bank on the other side.

There are a number of payment gateways that offer a different array of services. One of the most important things to look for in a payment gateway is whether or not the payment gateway allows you access to a secured area where you can manually refund previously processed credit card transactions. This will help you in handling returns on your store.

To process credit cards in real time you will need:

- A business bank account
- A credit card merchant account. Your bank or the gateway that you sign up with will help you get a merchant account. Note that credit card companies often handle online and offline credit card processing accounts separately. So even if you already have a merchant account that, for instance, is being used to process credit cards at your retail location, you may have to apply for an additional merchant account.
- An account with a payment gateway. Some credit card processors also act as a payment gateway, in which case you would not be required to take this further step. *CardService International*, a large credit card processor, is one of them (their gateway is called *LinkPoint*).

To use a payment gateway, you need to separately set up an account with one. Make sure that you create an account with a payment gateway that your bank can work with. Start by contacting your bank to find out what payment gateways they support.

Comersus supports these payment gateway:

- Authorize.Net (SIM/AIM)
- PayPal Web Site Payments Pro
- LinkPoint (CardService International's gateway)
- VeriSign
- Protx
- WorldPay

- IntelliPay
- National Secure
- UsaEPay
- 2CheckOut
- GoEMerchant
- RoboCharge
- UTCI
- PayByCheck
- QuickCommercePro
- Yahoo PayDirect
- CyberCash
- Planet Payment
- Transaction Central
- SecureTrading
- Ka Chinng
- IonGate
- SecPay
- Velocity Pay
- Bank of America
- White Label
- PlugNPay
- SkipJack
- Wells Fargo
- BeanStream
- Moneris
- Viborgnet
- Echonline
- PaySystems
- MoneyBookers
- EPDQ
- AsiaDebit PayZip
- PagamentoSeguro

And many more, view the complete listing of gateways at <http://www.comersus.com/features-payment.html>

Additional payment gateways can be added to Comersus for a fee. Contact us for more information. Check out features page at [www.comersus.com](http://www.comersus.com) to find an updated list of payment gateways supported.

**Note:** Typically, payment gateways provide merchants with an administration tool to view past transactions, process refunds, add new charges to a credit card account, etc. Inquire your payment gateway about such a service.

**Note:** When a payment gateway is involved in a credit card transaction, Comersus does not keep credit card information for that transaction in your store's database. The payment gateway does. This ensures added security as payment gateways have highly secure servers.

## About PayPal Payments

Comersus allows you to use another type of real time payment through the PayPal network. You can set up PayPal as the only payment method, or in conjunction with other payment methods to provide your customers with multiple payment options.

The advantage of using PayPal, as the store owner, is that you can process payments instantly, but without having to sign up for a merchant and a gateway account as described above. In fact, with PayPal you don't even need a business bank account, as PayPal accounts can be linked to personal bank accounts. As a store visitor, the advantage of using PayPal is also that you don't need to have or use a credit card to place an order.

In a nutshell, PayPal allows people to securely exchange payments online via e-mail.

The company works as a clearing house between sender (your store customers) and receiver (you). Both sender and receiver open an account with PayPal. At any time they can deposit and withdraw money from that account by linking it to their bank account or to a credit card.

The sender can submit a payment to the receiver by logging into the PayPal network and simply specifying the receiver's e-mail address. In the case of your store's transactions, customers that select PayPal as the payment option will be automatically prompted to log into the PayPal network, and send money to your e-mail account (i.e. your PayPal account).

When the receiver (you) gets the message and accepts it, money is transferred from the sender's PayPal account to the receiver's account.

To become more familiar with PayPal or set up an account, visit the company's web site at <http://www.paypal.com>

**Note:** When an order is placed on your store using PayPal, Comersus will label the order as “Pending”. That is because payment confirmation is not immediate. If you have configured PayPal IPN feature the order will be marked as Paid as soon as the funds are received in real time.

**Note:** If PayPal is the only payment option that you allow, and a customer doesn't already have a PayPal account, they will have to go through the PayPal account registration process before they can buy your products. Registering a new PayPal account only takes a couple of minutes, but you should keep in mind that there will be this extra step for your customers to take.

## Adding a Payment Option

To add a payment option, select *Add New Option* from the *Settings / Payment* menu. The following screen will be displayed.

As mentioned earlier in this chapter, payment options can be divided into two categories:

- **Real time** Funds will be automatically collected online and deposited in your bank (or PayPal) account. This is where you can set up payment options such as online credit card processing and PayPal.
- **Non-real time** (or offline). Funds will be collected offline, after an order has been placed. This is where you can set up payment options such as offline credit card processing, payment terms (Net 30, Net 60, etc.), cash on delivery (COD), etc.

**Note:** To process credit cards offline you will still need a business bank account and a credit card merchant account, but you will not need to use a gateway since transactions are processed manually, offline. This may be a good option, for example, if you do not expect many online orders per day, and you already have a retail store with a POS credit card terminal.



## Configuring a Real Time Payment Option

To add a new **real time** payment option make sure that you load redirectionUrl with the URL of the payment form.

To configure a real time payment option, you will need the gateway (or PayPal) account number, plus other information specific to each gateway. Once you provide the information requested by Comersus, your shopping cart will be automatically integrated with the selected gateway.

**Note:** To test a real time credit card processing option on your store, you should submit an order using credit card information that is valid, but not real. This is what some payment gateways call a "dummy" account. The transaction is real (so

you can test the system), but no credit card is actually charged. Most payment gateways will provide you with dummy account information for testing purposes. Others will allow you to set your account in testing mode, at which time you can use any credit card number, without actually being charged.

To configure **PayPal**, all you need to provide is the e-mail address used for your PayPal account. The rest of the information is already provided by Comersus.

## Configuring Offline Credit Card Processing

To add a new **non-real time** payment option make sure that you enter all the information regarding the payment in the email text field. That information will be sent along with order confirmation to the customer.

Because there is no gateway involved, setting up a non real-time payment option is easy.

To configure **offline credit card processing**, simply define the URL of the Off Line Payment form. When customers check out, credit card information will be collected, but the card will not be charged. To avoid orders submitted with false credit card information, Comersus will do a basic check on the credit card number before allowing the order to go through. If the number is incorrect, customers will receive an error message. If the number is a valid credit card number, then the order will go through.

Comersus, as always, will send you a confirmation e-mail once the order has been placed. It will then be up to you to charge the credit card offline, using a POS terminal, software that may be installed on your PC, or any other solution that you may be using. For security reasons, credit card information will not be included in the order confirmation e-mail. To retrieve such information, you will have to use the *Sales Menu / Show Order* component of the Comersus BackOffice +. See the [Managing Your Orders](#) section of this document for more information.

**Note:** All credit card information collected from your customers during non-real time credit card transactions is stored in the store database in an encrypted format to ensure data security.

## Defining payment by customer type

You can define that one payment is valid for certain customer types (Retail, Wholesale, etc) or that one payment type is valid for all of them.

## Modifying a Payment Option

To modify an existing payment option select *Settings / Payment / Modify*. You will be shown a list of the payment options that are currently active. Click on the *Modify* button to edit an option.



## Delayed Payments

### Chapter

# 8

With an optional feature included with Power Packs customers are able to post payments at a later time. This is useful if the connection is broken for any reason after the order was saved but before payment is posted. This is a common situation with an overloaded payment gateway. With this feature your customers will not have to re-post the order. The link to post payments for pending orders will appear inside customer's menu.

This feature can also be used for Recurring Billing since orders are created but payment must be posted by the customer for these new orders.

This utility will determine all available payment methods and it will show a drop down list so the customer is able to select which payment method to use (online credit cards, checks, wire, etc)

## Tax Options

---

In the United States, taxation on online sales is typically handled as follows: orders submitted by customers that reside in the same state where the company managing the online store is located are taxed; orders submitted by out-of-state customers are not taxed (this includes international customers). Comersus also supports country-based taxation for international stores.

### Adding a New Tax Rate by Region

To add a tax rule that applies taxes to an order based on the location where the customer resides, click on *Store Settings / Taxes / Tax per place*. Set the tax rate (to add a 6.5% tax rate, enter 0.065), and define the geographic limitation by selecting a zip code, or a state and how that rule will apply: `countryCode=US` and `countryCodeEq=-1` means that the rule will be calculated for the US. `countryCode=US` and `countryCodeEq=0` means that the rule will not be calculated for the US.

### Viewing/Modifying Tax Rates by Region

Click on *View/Modify Tax Rates* to display a list of all tax rules currently active in your store. To modify any of them, click on the *Modify* button. To delete a tax rule, click on the *Delete* button. To add a new tax rule, click on *Add New*.

## Adding a New Tax Rate by Product

### Chapter

# 9

You can also define special taxes by region for some specific products. To do so click on *Store Settings / Taxes / Tax per product* (Add and modify)

## Sales and Customers

---

**T**his section includes everything related to Sales and Customers such as viewing information about your customers, changing the customer type from *retail* B2C to *wholesale* B2B (which affects how much they are charged when they order products from your store), e-mailing a customer, adding a new customer to the database, viewing reports and charts, creating affiliates and more.

### Customer types

Since Comersus 9, with the Power Pack you can define unlimited customer types. Two of them are mandatory (retail and wholesale) Then you can add other customer types from BackOffice, Sales, Customers, Customer Types.

When you add a new customer type, each product will present new textboxes to modify products for the new customer type added.

### Viewing Customer Information

To locate a specific customer, you can search using the customer name. Or you can browse all registered customers by clicking on *Sales / Customers / List All*.

When you find the customer you were looking for, click on the *Modify* button to view customer details, change the customer type from retail to wholesale (or vice versa), or delete the customer from the database.

**Note:** Be careful when using the *Delete* function. If you delete a customer, all orders placed by that customer will also be deleted. Generally speaking, you should not delete customers from the database if they ever placed an order.

As mentioned above, this is also the area where you can change the customer type from *Retail*, which is the default setting, to *Wholesale* or to other customer types defined. There are many settings in your Web store that work differently depending on the customer type. Here is a list of them:

- Retail customers are shown and charged the *online price*. Wholesale customers are shown and charged the *wholesale price*. You define the two prices when you add or modify a product using the [Manage Products](#) menu.
- [Quantity discounts](#) can be different for wholesale customers. These are the price breaks that you may offer to customers that order large quantities of a certain product. To configure quantity discounts, select *Discount by Qty* under *Storefront / Discounts*.
- [Payment options](#) can be set differently for wholesale customers. This feature, for instance, allows you to grant wholesale customers special payment terms (such as Net 30) that retail customers do not receive. To configure payment terms and assign them to wholesale customers only, select *Add New Option* from the *Payment Options* menu, and then *Non-Real Time Payment Options*. When you add the new option, make sure to check *Apply to wholesale customers only*.

## Adding a New Customer

The ability to add a new customer right from your BackOffice+ may come of use to you especially if you deal with resellers (wholesale customers). Indeed, you can make it even easier for your resellers to use your online store, by using this feature to register them in advance with your store. You can then e-mail them their user name and password, and a link to your storefront.

When they place an order, they will not have to register with the store, as their account has already been set up. All they will have to do is log in with the user name and password that you provided, and contact, billing, and shipping information will already be there.

**Note:** If you set up a new customer, remember to provide him/her with the log-in information that you created (user name & password). The customer's e-mail address is the user name.

**Note:** For security purposes, billing information such as credit card details are not kept in the customer database unless you are using Off Line Credit Card option. The drawback is that customers will have to re-enter their credit card information (if that is the payment option of choice) the next time they place an order.

## Orders

You can locate one specific order with the order number, list all orders or list orders by status.

Once you have selected one order you can view all the details of that order such as Date, Total, Tax, Shipping Details, Products, etc

You can also add information about the Shipping Tracking like date shipped, UPS, USPS, FedEx tracking numbers and any other information about shipping. This information will be available from Order Tracking listing to the final customer. Shipping Tracking can be updated using BackOffice +, included with Power Pack Medium and Premium. An e-mail will be sent to the customer with tracking information and the order will be marked as Delivered.

One of the most important functions of the Order Display is the ability to change the status of the order. By default all orders are stored as Pending. Once the payment is submitted, the status may change automatically with a Silent Response from the payment gateway.

You can view other topics about Silent Response Configuration. Remember that not all payment gateways have this feature and that you will need to define the URL of the Silent Response script in the control panel provided by the payment gateway.

If your Payment Gateway has no Silent Response functionality you can still use the BackOffice to mark orders as paid. Marking an order as paid will:

1. Decrease the stock
2. Increase the sales for that product
3. Distribute Serial Codes or Digital Goods
4. Assign the authorization code to the order

You can also change the status of the order for off line payments like Checks, Wire Transfers or for Off Line Credit Cards (where you will process the credit card payment using a manual method).

From Order Display you can also Roll Back a paid order so the stock and sales are rolled back. You can also mark the order as Cancelled or even delete the entire order.

## **Adding custom fields**

You can add up to three custom fields to each order. You can use these fields for information like: date to receive the order, where did you hear about us, etc.

Instructions:

1. Go to BackOffice/Settings/Configuration
2. Enter the field label for orderFieldName1, orderFieldName2 and orderFieldName3

## **Managing Your Orders**

To understand how the *Manage Orders* component of Comersus works, let us first summarize how orders are handled by your store.

Status	Id	Previous status	Comments
Pending	1	N/A	At first all orders will be saved as Pending.
Paid	4	1	An order can be marked as Paid by the Silent Response of the Payment Gateway or manually using the BackOffice.
Delivered	2	4	When you enter the tracking information, the order will be marked as Delivered and an e-mail will be sent to the customer with Tracking Information.
Cancelled	3	1, 2, 4	Cancel an order if you receive invalid orders and you don't want to remove the records related to the order. Cancelled orders will not be considered for reports and charts.
ChargeBack	5	4, 2	If you receive a Chargeback for one payment you can use this option .An e-mail will be sent to the customer so they can repost the payment or contact the store administrator.
Refunded	5	4,2	Use this option to reflect a Refund. Stock and Sales will be updated and the amount refunded will be deducted from order total.

## RMA Request

Comersus includes a subsystem to request approvals for merchandise return. To qualify for an RMA number, the order must be marked as Delivered. From Your Account menu, the customer should click on RMA Request link. In the drop down, a list of Delivered orders will appear. The customer should enter return reasons and click Send. The RMA request will be sent to the store administrator for approval. When the RMA is approved by the admin, the customer will be able to print a shipping label from order details containing an RMA number.

## How to Locate an Order

To search for a particular order, view information about it, change order status, or cancel an order, you will use the *Sales / Orders / Locate* component of Comersus BackOffice +.

In the main menu, Comersus lists a summary of orders received that day, and in Sales Menu *View All Orders* button allows you to view all orders that were ever placed on your store (you can then sort them by date or order status).

By clicking on an order, you will load a page containing details on the order itself, the customer that submitted it, the payment option, and the order status. You can then modify the order status.,

shipment tracking and Transaction Results. To change the order status, simply click on the *Update Order Status* button or use the specific boxes for Shipment, Refund, Transaction Results, etc.

You can also *Cancel* an order using this window. When you do so, the order is no longer computed in your sales or order reports, but it is not actually deleted from the database. You can reinstate the order at any time (for example if you do receive a late payment).

You can also use Roll Back option to make a reverse in stock, sales, etc.

**Note:** When you cancel an order that was submitted using a real-time credit card payment option, the payment is not refunded. To refund the amount, you will have to contact your payment gateway or use the online administration tools that most payment gateways provide.

Comersus provides a number of ways to locate an order that was placed on your store, such as list per status, list all, list per customer, locate one.

20048, Date 10/6/2003, Posted from IP: 127.0.0.1

Name	John Smith, Jr. <a href="#">Block last name</a>
Email	<a href="mailto:test@comersus.com">test@comersus.com</a> <a href="#">Block email</a>
Vat Number	N/A
Phone	(305) 735-8008
Address	8345 NW 66TH ST #3537 (90210) CA - Los Angeles US
Shipping Address	(Same as billing address)
Details	3x #SPTDV/2 DVD Spinal Tap Options: = \$96.00
Shipment	FedEx Priority \$34.67
Shipment Tracking	<input type="text" value="UPS 23782437875"/>
Payment	Credit Card
Authorization code	AH876183
Discounts	- \$0.00
Status	Paid
Tax Amount	\$12.05
Total	\$142.72
Recurring billing	<input type="text" value="None"/> Next Billing <input type="text" value="10/6/2003"/>
Change Status	<input type="text" value="Select"/>
Delete	<a href="#">Delete order (!)</a> Warning: you cannot undo this action.
Roll-Back	<a href="#">Roll Back order</a> This option will cancel the order and update sales and stock
Refund	<input type="text" value="\$0.00"/> This option will change status, update stock/sales/total and it will send an email to the customer.

## How to Charge Off-line Credit Card Transactions

For more information about off-line credit card transactions, see that section under *Payment Options*. This chapter assumes that your store uses offline credit card transactions as a payment option and focuses on how to process those orders.

As mentioned above, all offline credit card orders are labelled *Pending* by Comersus as you have not yet received payment for them. After locating a pending order paid with off line credit card,

click on the *Change status* button. The credit card information can be viewed with the link provided in Show Order view. You can now charge the credit card using your POS terminal, software that may be installed on your PC, or any other system.

When the transaction is approved, you can change the status of the order from *Pending* to *Paid*. The order can now be packaged and shipped. When you do ship it, add shipping details to the same order details page, and update the order status to *Delivered*. This will not only keep your store's BackOffice+ updated, but also update the customer service area of your store, which provides customers with updated information on their orders. See *Chapter 12* for more information.

(!) You can also store the Transaction Results for payments such as Authorization Numbers and you can also store the Tracking Number for Shipments. The customer may retrieve this information using Customer Menu, Order Tracking.

To ensure data security, all credit card information collected from your customers during non-real time credit card transactions is stored in the store database in an encrypted format. It is decrypted *on-the-fly* only through the order management module of BackOffice +. If you download the Comersus store database (an MS® Access database) or make a query over SQL Server database you will not be able to read credit card details.

Also for security reasons, credit card information is never included in an order confirmation e-mail. You can configure Off Line Payment Package to send encrypted CC data by e-mail.

**Note:** When users submit their orders, they will simply select "Credit Card" from the payment option drop down menu on the checkout page. They will not know whether credit cards are processed online (real-time) or off-line on your store.

## Fraud Prevention Package

This feature helps you block presumably fraudulent orders before they reach the payment step, thanks to four filters.

The first and most important filter uses keywords. If you have found that orders from the email address `someone@somedomain.com` are fraudulent, you can add this string to the list of forbidden words. The next time this person tries to post an order, it will be blocked. The same applies to keywords for name, address and company.

The second filter is the purchase of a "bait product". You can configure a product in your store with a high price that will lure possible frauders, and load the product ID in the setting `pFraudPreventionExpensiveItem`. Fraud buyers don't intend to pay for what they purchase, so they won't pay attention to the price. When the buyer tries to check out this bait product, the order will be blocked.

The third filter is a high order total. You must have an idea from historic orders about the average order totals in your store. It would be unusual to receive an order much higher than that. You can load a suspiciously high amount in the setting `pFraudPreventionExpensiveOrder`. Any order with a total equal to or higher than this amount will be blocked.

The fourth filter is an inspection of the customer's IP address. The anonymizers used to post fraudulent orders report local IP addresses. This filter checks the IP address and reports purchase attempts from an invalid IP.

To enable fraud prevention, set the variable pFraudPreventionMode to "caution" or "paranoid". At "caution" mode, your store will save suspicious orders as usual but send a warning email to the administrator. If your store is set to "paranoid" mode, the order will be blocked and prevented from checking out.

## **PreCharge**

With PreCharge you can verify credit card payments before authorization. With this method you will maintain your fraud levels under control.

First of all register at <http://www.precharge.com/bin/go/comersus> and get a merchant key.

Then enter your merchant key at pPreChargeMerchant and your signatures at pPreChargeS1 and pPreChargeS2 inside BackOffice/Settings/Configuration.

In Real Time, Comersus will forward all customer details and credit card payment information. PreCharge will analyze the transaction to determine Approve or Reject status.

## **TeleSign Customer Confirmation**

With TeleSign you can verify your customers with an automated phone call.

To enable TeleSign register at [telesign.com](http://telesign.com) and enter your customer ID at pTeleSignCustomerId inside BackOffice/Settings/Configuration.

When this feature is enabled, your customers must register to shop. In the middle of the registration procedure, they will receive a phone call to verify the phone number provided. Only if the verification is correct, they will be able to complete registration.

## **Generating Invoices from the BackOffice**

With BackOffice+ you can generate Invoices based on online orders. You will have to select one specific order and then you will be able to print the invoice in your printer directly from the web application.

The Invoice template is located in the script `comersus_backoffice_generateInvoiceExec.asp`

You can change the layout using any HTML editor. If you have BackOffice+ a bar code chart will be printed in the Invoice so you can use a Bar Code Reader for your accounting programs or third-party applications.

## **Reward Bonus Points**

Your store can automatically provide Reward Points to your customers so they can use those points to make payments. You can define how many points per order total you are going to provide. That setting can be modified from BackOffice, Configuration, Settings, pBonusPointsPerPrice key. If you enter 0.5 the customer will receive ½ point per each dollar spent. Then they can return to the store and use those points earned to pay for an order. Note that points can be used to pay for the total order (shipping price and taxes too). If one order is



paid using points, the order status will be automatically marked as Paid and customer points will be decreased.

You can also verify and modify Reward Points from BackOffice+, Sales and Customers, Modify Customer.

To enable Bonus Points as a valid payment method for your store, create a new payment method named Bonus Points with redirectionUrl as comersus\_gatewayBonusPoints.asp and quantityFrom=0, quantityUntil=0. This payment method will be available only if bonus points are enough to paid for the entire order.

*Note: Points will be assigned when the order is marked as paid from Payment Gateway or BackOffice+ and not when the order is posted.*

## Recurring Billing

With Power Pack you can use Recurring Billing, an interesting feature to issue automatic invoices at regular periods (monthly, weekly, etc).

To enable this feature you need one posted order as the base order. From BackOffice +, Sales, List Orders you can browse that base order.

At the bottom of the Order Details page you can find a drop down menu to select the Period in days (7, 15, 30, 60, etc) and a box to define the next billing date for that order. After submitting that form the order will be listed with a small icon indicating that you have defined recurring billing.

Regarding the execution and verification of the order to be resubmitted you can find a file named store/comersus\_optRecurringBillingVerification.asp

Using WSH (Windows Scripting Host) or any other way to auto execute or load ASP pages in your server, you have to define once a day for this script.

If you cannot create WSH execution in your server you can link that script to your BackOffice and execute it manually once a day.

*Note: there are also other custom options for this regular execution that can be developed by any ASP programmer.*

Once the automatic verification is made and if there is a pending order to be billed that day, the order will be created and the store administrator will receive an e-mail notification.

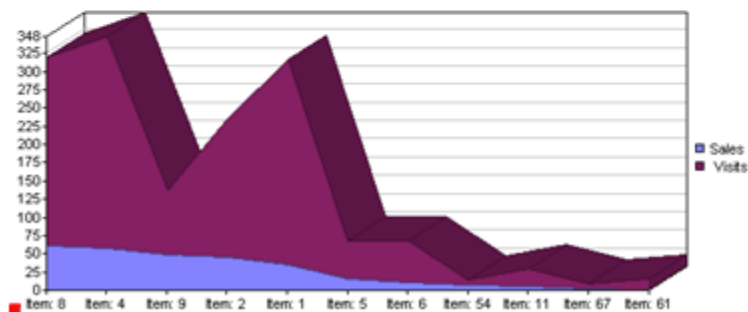
With this notification, the administrator will have to post the payment and mark the order as paid from the BackOffice, since the order is saved as Pending at first.

*Note: since Comersus 8, if you have defined certain items as recurring, those items will autcreate the recurring order and admin will not have to do this task manually.*

## Reports and Charts

Generating reports helps you keep track on orders that have been placed, view customer activity, and integrate with other applications by exporting order details.

Product	Description	Visits	Sales	Sales/Visits
8	The Best Laid Plans	259	62	0,24
4	Internet Manager	290	58	0,2
9	Orpheus Emerged	89	50	0,56
2	DVD Spinal Tap	189	46	0,24
1	Windows Millennium Edition	283	35	0,12
5	Red Hat Linux Administrator's Handbook	52	16	0,31
6	So You Want to Be President?	57	11	0,19
54	La Belle Noiseuse	6	8	1,33
11	Red Hat Deluxe WorkStation	24	6	0,25
67	Sheldon Bundle	8	2	0,25
61	Dupont Ellipsos Fountain Pen	16	1	0,06



## Generating Sales Reports

To view sales reports for your store, select *Sales / Statistics and Reports*. The window that is displayed provides the following information:

- Sales and Visits
- Orders per month
- Totals per month
- Revenue per product
- Sales Forecasting

Comersus allows you to filter per date or per product depending on the report. Some reports will show charts using Java technology (included with most popular web browsers like IE 5.0 and above).

You can also **export sales data** from Utilities Menu in Microsoft Excel format.

*Note: consider that some reports only get data from paid or delivered orders and that is why sometimes you can get an error message "not enough information to create reports": You can change this with a small customization .*

## Customer Tracking

With this option you can track your customers' activities in the store. You should select a customer record from the customers listing and then click on Tracking. The report will present date, time, action icon, description and parameters.

For example, John Doe has logged in at 10:10, then he has read store news, browsed DVD categories, then he has clicked on one specific DVD, finally he has added the item to the cart at 10:12 and checked out at 10:15.

With this information, the store admin can enhance store flow by understanding the most popular activities of customers.

## Affiliates

Affiliate marketing is what has been behind the success of many of the largest online stores in the world. Are there other Web sites on the Internet that may be interested in promoting your products, or just talking about them? If the answer is yes, then it may be a good idea for you to set up an affiliate program.

The concept of using *affiliates* is simple: a Web site other than yours refers potential customers to your store and, if they order, receives a commission on the sale. Affiliates can generate significant incremental revenues for your store, and are rewarded for doing so by the commissions that you will pay out to them.

To implement an affiliate marketing program, you need a system that tracks who referred the customer who placed an order, and keeps a log of commissions accrued by each referrer. Comersus provides you with a basic affiliate management system.

To set up a new affiliate program, follow these steps:

- **Create a new affiliate.** To create a new affiliate, select *Sales Menu / Affiliates* form. To set up the new affiliate Web site: add a name for this affiliate, a contact e-mail, and the commission rate. If the rate is 11.50%, enter 11.5. Comersus will automatically generate a unique ID for the new affiliate, which is what will be used to identify orders coming from its Web site.
- **Generate links for the affiliate.** For Comersus to recognize which affiliate referred a certain customer, the link that the customer clicks on must contain a special code that identifies the affiliate. For example, let's say that a Web site would like to insert on their Web pages a link to your store so that whatever a customer buys, they would get a commission. The link would look like this:

<http://www.yourwebsite.com/Comersus/store/default.asp?idaffiliate=9>

This is the exact same link that you are using on your own Web site to link any page of your site to the store's front page, except for the code that appears at the end of the link: "idaffiliate=9". This code identifies that affiliate number 9 is the one sending the customer to your Web site. Without the identifier, Comersus would not recognize that a Web site referred the customer, and you would not know if you owed a commission.

You can also let any store visitor to signup as an affiliate if you have Power Pack Premium. To do so just enable the affiliate registration link from store configuration. In this case a link will appear

in the storefront and any visitor will be able to enter their personal information, as a result they will obtain a page with the link and available banners. You can configure banner file names from store configuration also.

**List commissions reports.** Periodically, you will have to generate reports to see how many sales your affiliates have generated and calculate their commissions. To obtain a quick snapshot of sales generated by affiliates click on *list commissions*.

**Note:** If your affiliate network grows to a point where computing and paying commissions becomes too time consuming, you may want to investigate other systems that can help you manage that part of your store. Sophisticated affiliate management systems are available in the market, allowing you to do things such as automatically computing commissions and paying your affiliates, applying different discounts for different products, and much more.

## Affiliates and Suppliers Own Sales Listing

Using BackOffice+ you can create a new admin record with 75 level (listing) and assign an existing supplier or affiliate. Those profiles will have access only to specific parts of the BackOffice (reports for own products) and in the case of suppliers they can also add and modify products under their supplier group.

## Adding Forbidden Keywords for Sales

From Display Order or from Sales/Forbidden Keywords you can add certain strings that will be filtered if you have Fraud Prevention enabled. This is useful if you are just browsing orders and you realize that you have one order such as:

- Name: John Test
- Email: [ImAHacker@hotmail.com](mailto:ImAHacker@hotmail.com)

Just with one click you can add the last name or the email to the forbidden keywords list and the next time the Fraud Prevention feature will block the user before reaching the gateway.

You can also add and remove forbidden keywords from the menu.

## Serial Codes Management

From this menu you can define unique serial codes by product. Each time you sell one of those products, the Serial Code will be distributed by email as a Digital Good and the Serial Code will be marked as used.

*Note: if you want to distribute the same serial code to all your sales of the same product you can use Digital Goods field directly.*

## **Store Survey**

With Store Survey you can obtain important information about customers experience in your store. The survey link is always available in store footer

Survey results will be sent by e-mail to the administrator along with the date of the survey.

## **Utilities**

---

**U**tilities menu is a compilation of tools that will assist you in the day by day management. Here you can find a Decryption/Encryption Tool, a form to post SQL Queries to the database, Reset Functions to blank the database, Export Utilities, etc.

### **Generic SQL**

This menu is one of the most important for debugging and testing. You can post SQL Queries such as:

```
SELECT * FROM CUSTOMERS
```

```
DELETE FROM suppliers WHERE idSupplier>2
```

```
INSERT INTO admins...
```

You can find several guides and resources about SQL in the Internet such as

<http://www.w3schools.com/sql>

### **Reset Functions**

Be careful with these links. The main purpose of Reset Functions is to clear certain parts of the database. You can clear all sales and customer records with one click. If you want to make this

procedure manually it will get complicated since there are more than 8 related tables and sometimes you cannot delete one record if there is another related record.

*Note: if you want to start from scratch remember that you can download a clean MDB database from Comersus Free Downloads Page or you can obtain SQL and mySQL scripts to create a clean structure (included only with Power Packs).*

## **Exporting data to Microsoft Excel Spreadsheets**

With this function you can export products, customers and sales to an Excel Spreadsheet.

Your server must be able to use the component OWC.Spreadsheet.

Ask your webmaster about this possibility. Almost all Windows 2000 servers with Office installed have this component available.

Exported files will be placed in the comersus/database folder.

*Note: If your BackOffice is not exporting the files you have to verify that you have defined all permissions over comersus/database folder and that you have the component installed.*

## **Exporting data to VCF**

Use this function to export customer records into VCF cards. These cards can be used in PDAs, in iPods Contacts and in several applications like Microsoft Outlook, etc.

## **Importing Tab Delimited Data**

With this option, you can copy & paste a tab delimited file with product information. The field order of each row should be:

*sku, description, details, price, btobprice, imageUrl, smallImageUrl, listHidden, cost, sales, weight, length, width, height, category, supplier, emailText, keywords, clearance, donation, personalization*

If the order is not respected, the import procedure will not work or -even worse- it could import certain fields with other fields' contents.

## **Deleting Unclosed Sessions**

With this option you can delete dbSession records. Why do you have unused dbSession records? Sometimes if a customer leaves the store without closing the session with logoff or cancel order and they have products in the cart, some useless records remain in the database. If your store has considerable traffic, these records could become more and more and it's a good idea to delete them once in a while.

## Generating StoreFront Links

With this option you can create storefront links for

- One specific product
- One specific category
- A listing with links to all categories
- Links for customer actions such as ShowCart, Checkout, etc.

*Note: this utility creates the absolute links based on StoreLocation setting. If this setting is not correct, all links will reflect a wrong location.*

## Wordpress plug-in

With this option you can redirect default reviews and news from Comersus to a wordpress blog. Remember that wordpress mysql database should be the same as Comersus mysql database.

To enable wordpress to receive Comersus reviews or news you have to configure.

- Wordpress URL location (the URL where wordpress is installed)
- Checkbox for reviews or news

You can also use Comersus to sell paid subscriptions to wordpress articles.

- 1 . Go to wordpress admin and set the password for one post (or change current password for all posts)
- 2 . Create a new subscription item and enter the post password as the digital good distribution
- 3 . Using a text editor open includes/post-template.php (from wordpress installation) and replace `get_the_password_form` function by the code below

```
function get_the_password_form() {  
    $output = '<form action="' . get_option('siteurl') . '/wp-pass.php" method="post">  
    <p>' . __("This post is password protected. To view it please enter your password  
below:") . '</p>  
    <p><label>' . __("Password:") . ' <input name="post_password" type="password"  
size="20" /></label> <input type="submit" name="Submit" value="' . __("Submit") . '"  
/></p>
```

## Chapter

# 11

```
</form> To get subscription password <a href="http://www.your site  
.com/comersus/store/comersus_viewItem.asp?idProduct= id of your subscription item  
here">click here...>
```

```
;
```

```
return $output;
```

```
}
```

```
?>
```

## Customer Menu

---

Your store automatically provides your customer with dynamically updated information regarding their past orders. It also allows them to edit their account information, and use the “Wish List” feature of Comersus, if you enabled it. You can link to this section of your store from your Web site navigation (e.g. “Customer Service” or alike) or from the customer service area of your Web site, if you have one.

To log into the customer service area, your store visitors will have to first register with your store. Then, at any time, they can use their user name (which is their e-mail) and their password to log in. If they forget their password, Comersus can automatically send it to their e-mail address if they provide an e-mail address that does in fact belong to a registered customer.

From the customer service area, your customers can:

- **Cancel an order.** With this feature the customer is able to cancel a pending order . An e-mail notification will be sent to the store administrator.
- **Track an order.** This feature provides a customer with details regarding how the order was shipped, when, and related tracking number, if available. This is information that you would add to the order when changing its status from “Pending” to “Delivered” using the *Manage Orders* component of Comersus BackOffice +.
- **Download Digital Goods** With this optional feature the customers can download zip files related to their orders without knowing the real location and name of the file.
- **Modify personal information.** Here is where customers can edit their account information such as their billing or shipping address. Even if they used a credit card to place a previous order, for security reasons their credit card information is not shown on this page.



- **View wish list.** If the *Wish List* feature of Comersus is enabled on your store, customers can add items to their *Wish List* when browsing your catalog, instead of purchasing them. This allows them to virtually “save” a list of items in which they are interested, but which they are not ready to buy at that time. They can later view the list and add any of the items to the shopping cart at any time by logging into the customer service area and viewing their *Wish List*.
- **List Auctions.** Customers can list all current active auctions. Auctions will be listed depending on customer type (Retail, Wholesale).
- **Contact a store representative.** With this option the customer can contact store representatives using a predefined form with categories to define the destination of the contact form.
- **Log out.** By clicking on *Log Out*, a customer forces the store to “forget” who he/she is. The customer will then have to either log in again, or register as a new customer. Closing the browser also logs a customer out of the store.

## Enabling Digital Goods Download

To enable secure Digital Goods Download you need the Power Pack.

*Note: you can distribute direct links and common serial codes using Free Distribution.*

If you have a product that can be distributed as a digital good (like e-books, mp3 files, movies, etc) you have to follow this guide:

- 1- Go to BackOffice Settings and enable pDownloadDigitalGoods
- 2- According to the components installed in your server select the type of digital goods distribution in pDownloadGoodsType. Use None if your server does not have ASPUpload or ASPZip components. Use ASPUPLOAD to obfuscate files and ZIP if you want to create a dynamic Zip file with a random name. Consider that you will need components installed for these options.
- 3- Zip the files and copy them into digitalGoods folder
- 4- Edit each individual product using the BackOffice and enter the file name into digitalGoods field.
- 5- Consider that orders should be marked as PAID or DELIVERED to enable the customer download, so configure your online payment gateway’s Silent Response or manually mark orders as paid from BackOffice when you confirm the payments.
- 6- Your customers may download purchased files from Customer Menu, Order Tracking. The files will be renamed in real time with OrderNumber\_FileName.zip (like Order2008\_File8.zip) and the Browser will show a download popup box. You can also use ASPUpload component to hide the original location of the file and even use Dynamic Zip File creation to create one file per customer password protected.
- 7- If you want to limit the number of days to let the download link you can edit the setting key pDaysToDownloadGoods

- 8- You can include a custom message in the outbound email with payment confirmation so your customers will know where to go in order to obtain the purchased files.

## **Sending download links and digital goods by email**

Go to BackOffice, Settings and set pSendDigitalGoodsByEmail as true. Then load your complete link path into Digital Goods field. When the order is marked as paid, the customer will receive the link by email.

## **Selling Streaming Videos**

The streaming video selling function allows selling direct access to AVI, WMV and SWF videos.

Once the payment has been approved (whether by means of an online gateway online, payment through bonus points or once the admin marks the order as paid), the customer will be able to access the list of orders contained in Your Account. Once there, he should select the order and if the same contains a video the customer will be able to see an icon to get access to it.

### **To configure the sale of streaming videos:**

1. Place your videos in the digital goods folder.
2. Create a product for each video you wish to sell and load the name of the AVI, WMV or SWF video file within the Digital Goods field.
3. Set pDigitalGoodsWatchVideo as true in BackOffice/Configuration

### **Requirements:**

1. File System Object with full permissions on the digitalGoods folder.
2. Comersus v7.097 or superior
3. Power Pack 7.097 or superior
4. The customer should have an IE 6.0 or superior browser or any other compatible web browser supporting EMBEDDED videos using Media Player.

### **About video safety:**

The streaming video sales scheme does not require a subscription to expensive streaming servers. Instead, it uses a simple file renaming scheme according to the customer's session. This means that the original video is kept hidden and a copy is created for the logged-in customer. This copy will self-destruct once the customer closes the video window.

In case a customer does not close said window or if he does not have the JavaScript function which executes the deleting code activated, the admin will have to carry out a daily deleting process of the video copies destined for streaming.

This can be done by means of a simple automatic procedure that could eliminate files having an avi or wmv extension, the names of which start with a specified customer prefix in your store.

## **Professional Databases**

---

**Y**our store has an Access database for testing and small stores; however we advise to use Microsoft SQL Server or mySQL databases. You can migrate the data from the mdb file to SQL Server or mySQL using third party tools or you install from scratch mySQL and SQL Server. Comersus 9 includes scripts for that purpose into /sql folder.

### **SQL Server or mySQL?**

The decision is up to you. Both are professional databases and are fully supported by Comersus. The main differences lie in price and licensing schemas. MySQL is free for certain situations and the license is Open Source. SQL Server is more popular and some companies have contracts with Microsoft so they don't have additional license fees to pay.

### **Creating the Microsoft SQL Server Database**

1. Open SQL Enterprise Manager and Create a new database called "Comersus".
2. In SQL Enterprise Manager go to Tools>SQL Server Query Analyzer.

On the drop down box at the top right make sure your database "Comersus" is selected.

Then copy and paste the contents of SQLServer9Structure.txt into the Query Analyzer.

Click the green play button at the top. Some errors may appear but this is normal.

If you get some error like "Specified owner name 'dbo' either does not exist or you do not have permission to use it", then maybe you have not logged in as administrator. Just open the file with some text editor and replace all "dbo" by "yourLoginName". Then copy & paste and try again.

3. Now copy and paste the contents of defaultData.txt and repeat the procedure explained before.
4. Go to Security, Login Sessions, add a user name "Comersus" using database "Comersus". Put SQL Server authentication.
5. Select Users in tree view. New Database User named "Comersus". With public and db\_owner checked.
6. Open comersus/includes/settings.asp and change the connection to SQL method. Change the IP of the server (127.0.0.1 for local server) and change the password by the one you selected on item 4.
7. Now you can open the store with BackOffice and add categories, define payments, etc.

## Creating the mySQL database

If you run your own server, first of all download mySQL Database and mySQL connector from [www.mysql.com](http://www.mysql.com) , then follow these simple steps:

- 1- Open mySQL Workbench
- 2- Create a new database named `comersus` at Databases TAB
- 3- Copy and Paste mySQL9Structure.txt contents
- 4- Execute the query
- 5- Repeat the procedure with mySQLData.txt
- 6- Create a new System ODBC named comersus with Host=localhost and User=root (blank password)
- 7- Open comersus/includes/settings.asp and change connection method to DSN (you have an example commented)
- 8- Open comersus/includes/settings.asp and change pDatabase="mySQL"
- 9- Add at least one new shipment and payment methods

If you have a hosting account and they provide PHPMyAdmin utility to manage mySQL databases, follow these simple steps.

- 1- Log in to phpMyAdmin
- 2- Click on Databases
- 3- Choose the destination database
- 4- Click on SQL Tab
- 5- Copy the content of MySql9Structure.txt or click browse to open that file from local disk
- 6- Click Go button
- 7- Repeat from step 4 with file defaultData.txt

## On-Line Payment Gateways

---

**Y**ou can set up several payment gateways with Comersus Cart. This chapter will contain specific instructions for each payment gateway. Why do you have to use On-Line Payment Gateways? Some valid reasons: it is very convenient, you can focus on tasks other than charging each payment manually, you can use security tools from Payment Gateways to avoid frauds, your customer will obtain the authorization code in real time, you can deliver digital goods in real time, and you can update stock and sales automatically with Silent Responses from Payment Gateways.

### 2Checkout

First of all you have to sign up at <https://www.2checkout.com/2co/signup?affiliate=55003>. With this system you don't have to wait weeks to get approved; after making the initial setup payment you are able to sell online.

*Make sure that you have the Power Pack and that you have downloaded the 2Checkout integration.*

2Checkout will send you a Store Number. Write down this number since you are going to need it in order to set up the payment in Comersus.

Make sure that you have copied the files `comersus_gateway2Checkout.asp` and `comersus_gateway2CheckoutOrderConfirmation.asp` into `comersus/store` folder.

Using the BackOffice create a new payment method named Credit Cards with redirection URL pointing to `comersus_gateway2Checkout.asp`.

Using BackOffice, Settings, Configuration open the setting named `p2CheckoutSID` and insert there the Store Number.

At this point you are ready to sell and charge credit cards. If you also want to configure the PassBack to notify Comersus when the order is approved, mark the order as paid and distribute an automatic payment invoice, continue with following steps.

Log in now to 2Checkout Control Panel at <https://www.2checkout.com/2co/login> and select Account Details, Return.

Go to Look & Feel Settings / Approved URL and enter

[http://www.Your Domain Here.com/comersus/store/comersus\\_gateway2CheckoutOrderConfirmation.asp](http://www.Your Domain Here.com/comersus/store/comersus_gateway2CheckoutOrderConfirmation.asp)

In the Secret Word box enter any secret word as a combination of letters and numbers, then press Save PassBack Parameters.

Open BackOffice, Settings, Configuration and enter the Secret Word into p2CheckoutHashWord key.

Remember that you have to add all your products inside 2Checkout with the same ID as they were added inside Comersus. You can do this manually or make an export using Utilities / Export to CSV / Products for 2Checkout. After the export was completed, upload the CSV using 2Checkout control panel.

Now you are ready to accept online payments and to deliver digital goods in real time.

## **PayPal Standard**

First of all you have to sign up at <https://www.paypal.com/us/mrb/pal=NNLGPNK82TUS6> Then you have to enter your PayPal Merchant Email inside BackOffice/Settings/Configuration (key named pPayPalMerchantEmail) Then you have to create a new payment method named PayPal with redirectionUrl pointing to comersus\_gatewayPayPal.asp

### **To configure optional IPN (Instant Payment Notification)**

1. Log in to your PayPal account.
2. Go to the 'Profile' subtab .
3. Click on the 'Instant Payment Notification Preferences' link in the 'Selling Preferences' column
4. Click on Edit .
5. Check the box and enter  
[http://www.yourdomain.com/comersus/store/comersus\\_gatewayPayPalSilentResponse.asp](http://www.yourdomain.com/comersus/store/comersus_gatewayPayPalSilentResponse.asp)  
to receive your IPN Notifications.
6. Click on Save.

## **PayPal Web Site Payments Pro**

First of all consider that Web Site Payments Pro has certain requirements, among them: You need a PayPal business account, your company must be located in the US, you need an SSN to get a Web Site Payments Pro account and you have to enable PayPal checkout (your customers will decide if they want to checkout in the shopping cart or in PayPal).

Steps to use API Signature (easy implementation):

- 1- Sign up for Web Site Payments Pro
- 2- Get approved
- 3- Generate an API Signature from Profile/API Access
- 4- Go to BackOffice Plus, Settings, Payments, PayPal Wizard, select PayPal Pro and enter your API Signature credentials
- 5- Copy Web Site Payments Pro scripts in comersus/store folder

Note about SandBox:

. If you want to use the SandBox make sure to install SandBox cert/user/pass and set pStoreFrontDemoMode=-1

## Cardinal 3dSecure for PayPal Pro UK

1. Login to BackOffice Plus, Settings, Payments and execute PayPal Wizard for PayPal Pro
2. Go to Settings, payments, edit payment, edit Credit Cards and set redirectionUrl as comersus\_gatewayPayPal3dSecure1.asp
3. Edit your Cardinal Data into the file CentinelConfig.asp and upload all Cardinal files to comersus/store folder

```
ProcessorId          = "xxx-xx"
MerchantId           = "xxxx"
TransactionPwd       = "xxxxxx"
TransactionUrl       =
"https://centineltest.cardinalcommerce.com/maps/txns.asp"
TermURL              = "http://your domain here/your comersus folder
here/store/ccAuthenticate.asp"
```

## Authorize.net SIM

1. Sign up using any Commercial Partner at [www.authorize.net](http://www.authorize.net). You will obtain an account name and password.
2. Make sure that you have the Power Pack and that you have selected Authorize.net SIM gateway. More information at <http://www.comersus.com/store>.
3. Copy comersus\_gatewayAuthorizeNetSim.asp and comersus\_gatewayAuthorizeNetSilentResponse31.asp into comersus/store folder
3. Using BackOffice, create a new payment method named Credit Cards and complete the field redirect URL with comersus\_gatewayAuthorizeNetSim.asp
4. Log into <https://secure.authorize.net>, go to Settings, go to Receipt Page/Receipt Method/Default Receipt Link URL, enter [http://www.yourDomain.com/comersus/store/comersus\\_defaultOrderConfirmation.asp](http://www.yourDomain.com/comersus/store/comersus_defaultOrderConfirmation.asp)

5. Select Receipt Method: Link, and enter "Return to the store" as the text.
6. Go to Settings, Obtain Transaction Key. Using the secret answer you will obtain a new transaction key. Copy and Paste this key or write it down.
8. Go to Silent Post URL and enter  
`http://www.yourDomain.com/comersus/store/comersus_gatewayAuthorizeNetSilentResponse31.asp`  
That script will execute the order status update (set order as paid, update stock, etc).  
Note: we advice to change the silent response file name to avoid any hacking over Silent Response scripts.
8. Log out and return to BackOffice Plus.
9. Go to Settings, Configuration and insert your Login ID into pAuthorizeSimID key and the Transaction Key obtained from Authorize.net into pAuthorizeSimTxnKey
10. If your store is in demo mode you can make test transactions to a Test Server. For that purpose you can use 4300000000000 as the credit card number.

Everything should be ready to start selling with AuthorizeNet online payments.

Common error & fix: if you get Error 97 (The time period for this request has expired. Applicable only to SIM API). The most likely cause is that the clock on your server is set incorrectly (check to see if it adjusts itself for Daylight Savings Time).

This will help you determine if you need to either adjust the time on your server, or if that isn't possible, adjust the timestamp your SIM script generates.

This error appears if the timestamp is either five minutes ahead of GMT or fifteen minutes behind GMT.

The below URL is setup for Error 97 testing. This tool will tell you if the timestamp your script is generating is significantly off:  
`http://www.sluggis.com/error97.htm`

If you are having error 99 you can find some help here  
`http://www.sluggis.com/error99.htm`

## **Authorize.net AIM**

First of all sign up using any Commercial Partner at [www.authorize.net](http://www.authorize.net).  
You will obtain an account and password.

*Make sure that you have the Power Pack and that you have downloaded Authorize.net integration.*  
Copy `comersus_gatewayAuthorizenetAimForm.asp`  
`comersus_gatewayAuthorizenetAimExec.asp` into `comersus/store` folder.

Log into Authorize.net Merchant Interface and create an API Login ID.

Go to Settings / Transaction Key menu, enter your secret response and obtain the Transaction Key (copy and paste to some temporary text document).



Go to Settings / Password required mode and set Require Password for all transactions.

Log in to your BackOffice+ and encrypt the Transaction Key obtained from AuthorizeNet using Utilities/Encryption. Then paste the encrypted transaction key (something like 157|123|145|...) into Configuration/Settings/pAuthTransactionKey.

Enter your API Login ID into pAuthorizenetLogin

Create a new payment method named Credit Cards with redirection URL pointing to the full path with HTTPS like [https://www.Your Domain Here.com/comersus/store/comersus\\_gatewayAuthorizenetAimForm.asp](https://www.Your Domain Here.com/comersus/store/comersus_gatewayAuthorizenetAimForm.asp).

## Google Checkout

Instructions:

1. Create a new folder comersus/google with HTTP Basic Authentication (User:Google Merchant ID, Password: Google Key)
2. Purchase and install SSL certificate from one of the supported providers (see below)
3. Open comersus\_gatewayGoogleApi.asp with a text editor and enter your Google Merchant ID and Google Key at

Line 129

```
getMerchantId = ""
```

Line 144

```
getMerchantKey = ""
```

4. Copy all the files but comersus\_googleNotification.asp and comersus\_gatewayGoogleMerchant\*.asp into comersus/store folder
5. Copy comersus\_googleNotification.asp and comersus\_gatewayGoogleMerchant\*.asp into comersus/google folder
6. Try to load [https://www.yoursite.com/comersus/google/comersus\\_gatewayGoogleNotification.asp](https://www.yoursite.com/comersus/google/comersus_gatewayGoogleNotification.asp). You should get an authentication pop up. Otherwise configure the HTTP Basic Authentication correctly.
7. Login into <https://checkout.google.com/sell/orders>, go to Settings, Integration
8. In API callback URL enter the complete path to comersus\_gatewayGoogleNotification.asp starting with https
9. Go to settings/Preferences and select Automatically authorize and charge the buyer's credit card
10. Uncheck "Shopping cart post security"
11. Delete [www.yoursite.com/comersus/store/comersus\\_showCart.asp](http://www.yoursite.com/comersus/store/comersus_showCart.asp)
- 12.

If you are going to use Off Line Shipments: rename [www.yoursite.com/comersus/store/comersus\\_showCartOffLine.asp](http://www.yoursite.com/comersus/store/comersus_showCartOffLine.asp) by [www.yoursite.com/comersus/store/comersus\\_showCart.asp](http://www.yoursite.com/comersus/store/comersus_showCart.asp)

If you are going to use UPS: rename  
www.yoursite.com/comersus/store/comersus\_showCartUps.asp by  
www.yoursite.com/comersus/store/comersus\_showCart.asp  
If you are going to use USPS: rename  
www.yoursite.com/comersus/store/comersus\_showCartUsps.asp by  
www.yoursite.com/comersus/store/comersus\_showCart.asp

Note: discount codes and other Real Time Shipments are not supported at this time for Google Checkout Integration

## BeanStream

First of all go to [www.microsoft.com](http://www.microsoft.com) and download MS Soap Toolkit 3.0. After the download, install it in your server. Then sign up at [www.beanstream.com](http://www.beanstream.com) ; you will obtain a merchant ID and password.

*Note: Make sure that you have the Power Pack and that you have downloaded Beanstream integration.*

Copy the files comersus\_gatewayBeanStreamFormSoap.asp,  
comersus\_gatewayBeanStreamExec.asp and  
comersus\_gatewayBeanStreamSilentResponse.asp into comersus/store folder.

Using BackOffice, create a new payment method named Credit Cards with redirection URL pointing to comersus\_gatewayBeanStreamFormSoap.asp.  
Go to Settings, Configuration and insert your Merchant ID into pMerchantIdBeanStream key.

You can make test transactions using a test merchant id that you will receive from BeanStream. For that purpose you can use 4300000000000 as the credit card number. After testing you can log into your BeanStream account and retrieve those transactions.

Everything should be ready to start selling with BeanStream online payments.

*Note: If you want to install the basic version it is not necessary to install the Soap Toolkit and the name of the files to copy are comersus\_gatewayBeanStreamForm.asp and comersus\_gatewayBeanStreamResponse.asp. Remember that this version doesn't decrease the stock and doesn't change the order status. The most important difference is that this option links to the BeanStream server to enter the Credit Card information.*

## PayZip

1. First of all verify that your server supports the component MSXML2.ServerXMLHTTP.
2. Then sign up at [www.payzip.com](http://www.payzip.com) , you will obtain an merchant ID and password.

3. Login into your account and set this script name `comersus_gatewayPayZipSilentResponse.asp` as the silent response script.
4. Copy the files `comersus_gatewayPayZip.asp`, `comersus_gatewayPayZipStatus.asp` and `comersus_gatewayPayZipSilentResponse.asp` into `comersus/store` folder.
5. Using BackOffice, create a new payment method named Credit Cards with Redirection URL pointing to `comersus_gatewayPayZip.asp`.
6. Go to Settings, Configuration and insert your Merchant ID and password for PayZip.
7. You can make test transactions using a test merchant id that you will receive from Payzip. For that purpose you can use 4567350000427977 as the credit card number, 421 as the CVC and 12/06 as the expiration date.
8. For live transactions open the scripts `comersus_gatewayPayZip.asp` and `comersus_gatewayPayZipStatus.asp` and you will find some instructions.
9. Everything should be ready to start selling with PayZip online payments.

## Protx

1. Sign up at [www.protx.com](http://www.protx.com) , you will obtain a Vendor ID and password.
2. You should also receive a script named `functions.asp`, place it into `includes` folder.
3. Copy the files `comersus_gatewayProtx.asp` and `comersus_gatewayProtxSilentResponse.asp` into `comersus/store` folder.
4. Using BackOffice, create a new payment method named Credit Cards redirection URL pointing to `comersus_gatewayProtx.asp`
5. Go to Settings, Configuration and insert your Vendor ID and password for Protx.
6. You can make test transactions using a test Vendor ID that you will receive from Protx.
7. Everything should be ready to start selling with Protx online payments.

## OzHosting

1. Sign up at <http://www.ozhosting.com> (look for the feature ecommerce web transactions) you will obtain a merchant ID and software applications.
2. Install the software and follow the instructions in order to register the components in your server.
3. Copy the files `comersus_gatewayOzHosting.asp`, `comersus_gatewayOzHostingForm.asp` and `comersus_gatewayOzHostingExec.asp` into `comersus/store` folder.
4. Using BackOffice, create a new payment method named Credit Cards with Redirection URL pointing to `comersus_gatewayOzHostingForm.asp`.
5. Go to Settings, Configuration and insert your Merchant ID for OzHosting.
6. You can make test transactions using a test merchant id that you will receive from OzHosting. For that purpose you can use 4242424242424242 as the credit card number.
7. If you change the demo mode of the storefront to false Comersus will send live transactions to the ozHosting gateway.

Note: if you are using a password you can enter it inside the script  
comersus\_gatewayOzHostingExec.asp

## SecurePost

1. Sign up at [www.merchantpartners.com](http://www.merchantpartners.com) , you will obtain a merchant ID and a component.
- 2 Register the component in your server named ATSSecurePost.dll.
3. Copy the files comersus\_gatewaySecurePostForm.asp and comersus\_gatewaySecurePostExec.asp into comersus/store folder.
4. Using BackOffice, create a new payment method named Credit Cards and redirection URL pointing to comersus\_gatewaySecurePostForm.asp.
5. Go to Settings, Configuration and insert your Merchant ID that you had received from SecurePost.
6. For test purposes you can contact them and ask for a test merchant id and a test credit card number.
- 7 For test purposes you can use merchant id equal to TEST0 and credit card number 5454545454545454.
8. Everything should be ready to start selling with SecurePost online payments.

## CyberSource

1. Verify that your server supports the component MSXML2.ServerXMLHTTP.
2. Sign up at [www.cybersource.com](http://www.cybersource.com), you will obtain a merchant ID, a reference code and a component CybsWSecurity.dll.
3. Register the component and obtain a key (this is a file name yourMerchantId.p12).
4. Copy the files comersus\_gatewayCyberSourceForm.asp and comersus\_gatewayCyberSourceExec.asp into comersus/store folder.
5. Using BackOffice, create a new payment method named Credit Cards and redirection URL pointing to comersus\_gatewayCyberSourceForm.asp.
6. Go to Settings, Configuration and insert your Merchant ID, Reference Code (merchantReferenceCode) and the CyberSource key location.
7. You can make test transactions using your merchant id. For that purpose you can use 4111111111111111 as the credit card number and 10/2010 as the expiration date.
8. For live transactions open the scripts comersus\_gatewayCyberSourceExec.asp and replace <https://ics2wstest.ic3.com/commerce/1.x/transactionProcessor> with <https://ics2ws.ic3.com/commerce/1.x/transactionProcessor>
9. Everything should be ready to start selling with CyberSource online payments.

## Payment Processor

1. Sign up at [www.paymentprocessor.com](http://www.paymentprocessor.com) to get a merchant ID.
2. Copy the files comersus\_gatewayPaymentProcessorForm.asp, comersus\_gatewayPaymentProcessorResponse.asp and comersus\_gatewayPaymentProcessorExec.asp into comersus/store folder.

3. Using BackOffice, create a new payment method named Credit Cards and redirection URL pointing to `comersus_gatewayPaymentProcessorForm.asp`.
4. Go to Settings, Configuration and insert the Merchant ID received from PaymentProcessor.
5. For test purposes you can contact them and ask for a test merchant id and a test credit card number.
6. Everything should be ready to start selling with PaymentProcessor online payments.

## EPDQ

1. Sign-Up for the payment gateway and get a User and Password
2. Login at <https://secure2.epdq.co.uk/cgi-bin/CcxBarclaysEpdqAdminTool.e>
3. Configure pass-phrase with a password, allowed URL as `http://www.Your Domain Here.com/comersus/store/comersus_gatewayEPDQ.asp`, Post URL as [http://www.Your Domain Here.com/comersus/epdq/comersus\\_gatewayEPDQSilentResponse.asp](http://www.Your Domain Here.com/comersus/epdq/comersus_gatewayEPDQSilentResponse.asp), post user: your EPDQ user name, post password your EPDQ password (these values could be different also)
4. Create a new folder `comersus/epdq` and place there `comersus_gatewayEPDQSilentResponse.asp`
5. Using your Web Site Control Panel add a user and password to `comersus/epdq` folder so if you load `comersus_gatewayEPDQSilentResponse.asp` in your browser it will appear a password pop-up window. Use the same user and password sepecified in point 3
6. Create a new payment method in Comersus BackOffice named Credit Cards with redirectionUrl as `comersus_gatewayEPDQForm.asp`
7. Configure the user and passphrase into Comersus/Settings/Configuration keys `pEpdqId` and `pEpdqPass`

## WorldPay Junior Method

1. Copy WorldPay gateway files into `comersus/store`
2. Go to BackOffice, Settings, Payments and create a new payment method named Credit Cards with redirectionUrl pointing to `comersus_gatewayWorldPay.asp`
3. Go to BackOffice, Settings, Configuration and edit `pWorldPayInstId` with your Worldpay store ID
4. If you want to change the currency, edit `comersus_gatewayWorldPay.asp` with a text editor and replace GBP in this line by your currency code `<input type = "hidden" name="currency" value="GBP">`
5. Go to WorldPay Control Panel and define the call back to `comersus_gatewayWorldPayCallBack.asp` (change the file name for security purposes)

## LinkPoint API

1. Download the LinkPoint API COM for Windows from <http://www.linkpoint.com>

2. Register the linkPoint DLL that came inside the zip file and make sure that you are able to use LpiCom\_6\_0.LPOrderPart component
3. Extract the pem file text that came with your LinkPoint welcome e-mail to a file with .pem extension and place that file inside your server
4. Copy all LinkPoint Gateway files into comersus/store
5. Open Comersus BackOffice, Settings, Payments and create a new payment method named Credit Cards with redirectionUrl pointing to SALE\_MININFO.ASP
6. Open your comersus/store/config.inc file and edit configfile and keyfile location with your current data

## LinkPoint Basic

LinkPoint Basic should be used if you are not able to install LinkPoint API DLLs in your server or if you are not able to get your own SSL certificate.

1. Copy comersus\_gatewayLinkPointBasic.asp into comersus/store
2. Go to BackOffice, Settings, Configuration and enter your LinkPoint Store name into pLinkPointBasicSname
3. Go to Settings, Payments and create a new payment method named Credit Cards with redirectionUrl pointing to comersus\_gatewayLinkPointBasic.asp

## Bank of America

1. Login at <https://manager.bamart.com/Login.asp>
- 2) Click on Manage Store, order rules
- 3) Security Settings, select Minimum Enforcement radiobutton
- 4) Enter your site URL inside Authorized Web Site textbox
- 5) Create 2 static pages, one of them with approval message and another one with rejection message, upload the pages to your store and enter the URL of these pages into Redirect To Merchant Approval/Declined Pages
- 6) Click in the upper bar Publish Changes icon and then click in Activate button
- 7) Create a payment method named Credit Cards with redirection url as [https://www.YourDomainHere.com/comersus/store/comersus\\_gatewayBankOfAmerica.asp](https://www.YourDomainHere.com/comersus/store/comersus_gatewayBankOfAmerica.asp)

## CCNow

First you have to sign up to CCNOW at [www.ccnow.com](http://www.ccnow.com) to obtain the CCNow Login and CCNow Activation Key

*Make sure that you have the Power Pack and that you have downloaded CCNow integration. More information at <http://www.comersus.com/power-pack.html>*

CCNow will send you an Activation Key. Write down this number since you are going to need it in order to set up the payment in Comersus. Make sure that you have copied the file `comersus_gatewayCCNow.asp` into `comersus/store` folder.

Using the BackOffice create a new payment method named CCNow with redirection URL pointing to `comersus_gatewayCCNow.asp`.

Using BackOffice, Settings, Configuration search the setting named `pCCNowLogin` and insert there your Login from CCNow. Also search the setting named `pCCNowActivationKey` and insert there your Activation Key provided by CCNow.

At this point you are ready to sell and charge credit cards.

Log In to CCNow to see your account status.

## **eWay**

1. Copy `comersus_gatewayEWayForm.asp` `comersus_gatewayEWayExec.asp` and `comersus_gatewayEWayIncludes.asp` inside `comersus/store` folder
2. From Comersus Backoffice/Payments create a new payment method named Credit Cards with redirectionUrl pointing to `comersus_gatewayWayForm.asp`
3. In Comersus BackOffice/Settings/pEwayCustomerID load your eWay Customer ID

## **UsaePay Client**

1. Copy `comersus_gatewayUsaEpayClient.asp` to `comersus/store`
2. Go to BackOffice, Settings, Payments and create a new payment method named Credit Cards with redirectionUrl pointing to `comersus_gatewayUsaEpayClient.asp`
3. Go to BackOffice, Settings, Configuration and edit `pUsaEPayUMKey` with your UsaePay UMkey

## **Other payment gateways**

1. Usually you will have to load your payment gateway settings into Configuration/Settings
2. Then you have to create a new payment method with redirectionUrl pointing to the payment gateway form (example `comersus_gatewaySomeGatewayForm.asp`)

If you need specific gateway instructions not covered here please contact us at the forum [www.comersus.org](http://www.comersus.org)

## Performance and Speed

---

**Y**ou can install and use the default version with Access database in most of the cases but sometimes it is necessary to make some modifications in order to get better performance and speed in your store. Some modifications are easy to apply and others will require the assistance of programmers, webmasters or database administrators.

### Database

The first variable to consider is the database to be used. Comersus is prepared to work with Access, mySQL and SQL Server. Access comes with the default version and you don't need special skills to use this database. However, if your store has some traffic and you have a big catalog it may be necessary to switch to one professional database like mySQL or SQL Server.

In some cases you will get a store 5 times faster just by changing the database to mySQL or SQL Server. You will also get a more reliable system with tuning tools, backup sub-systems, security and additional features that cannot be implemented in Access. Another consideration is the number of visitors: based on several technical documents found on the Internet, with Access you cannot have more than 300 simultaneous users browsing your store. With a professional database you can easily provide service to all your customers at the same time.

*Note: you will need Power Pack Medium or Premium to use Professional Databases since they come with the SQL scripts to create database structures. You can also migrate from Access using third-party tools but you will need manual adjustments.*

Using Diagnostics and Tools, Speed Test, in a Compaq Proliant DL-380 with 256mb and 1 processor it took 4 seconds to insert 1000 records into products table for Access database. Using mySQL database, the same test took only 1,64 seconds.

### Static Pages

By default, Comersus uses a dynamic script to retrieve some products, categories and other information to your Store Entry Page. If you have huge traffic, and all users come to the same Entry Page, you will have an overload to your database. In some cases it is good to design a static



Entry Page with all images, product description and prices hard-coded. You will lose some flexibility but you will have performance benefits.

Without using this extreme schema you can create a simplified version of the dynamic home with less queries to the database or queries that are updated to a temporary file once a day.

You can also replace dynamic categories pages with static pages with hard-coded categories if they don't change so often.

## Image Optimization

Try to maintain Header and Footer templates light. Avoid several GIF animations and huge images. Try to cut big images into small pieces. Use the same idea for product images. You can use specific graphic software to make optimizations of all web images to be used.

## Compiled Code

Comersus is developed in a scripting language. However, it can be optimized by compiling the ASP files into a DLL. This option is not designed for everyone since not all hosting spaces accept DLLs. You must also consider that you cannot include changes immediately as you can do with default version.

Anyway, this is a good choice for companies that run their own web server, looking for another speed layer.

## Load Balance

Since Comersus 5 you can also use a new utility named Load Balance. For high traffic stores, sometimes the web server reaches the limit of http requests. With this utility you can configure two web servers running Comersus store connected to the same database.

The utility will retrieve traffic conditions in each web server and it will route visitors to primary or secondary web server.

Instructions:

1. Copy comersus\_optLoadBalanceMain.asp and default.asp into your main web server, comersus folder
2. Copy comersus\_optLoadBalanceRemote.asp into your secondary web server, comersus folder directory
3. Copy comersus\_optLoadBalanceActiveUsersRoutines.asp into comersus/store folder in both servers
3. Configure Remote Server Location inside pRemoteServerLocation (IP or URL)
4. Open your main and remote web server's comersus/store/default.asp and insert the following line to track visitors

```
<!--#include file="comersus_optLoadBalanceActiveUsersRoutines.asp"-->
```

## Other changes

There are other things that can be modified in order to speed up your store.

1. You can replace ASP Includes by inserting the included file in the base script for most popular pages.
2. You can replace Dictionary Object translation messages for static HTML if you are not going to need the Multilanguage option.
3. You can remove all IF comparisons for unused features of Comersus like Hot Deals, Reviews, Best Sellers, 1StepCheckout, etc.
4. You can disable visit counters for products and main store counter.
5. You can rewrite SQL Sentences and create additional indexes for specific scripts depending on your database system and catalog size.
6. You can replace wildcard keyword searches ("%b%") with complete field searches ('books').
7. You can install the store in a dedicated server and the database in one or several dedicated server/s and make a fine tuning with a database administrator.

## Troubleshooting

---

If you get errors in your already working store don't panic. Comersus has included an error log to simplify your technical support requests. First of all enable error log from settings: pEnableErrorLog as true. Then try to replicate the error. You will get a screen with error details. Our technicians will be able to diagnose and provide assistance with that information.

In BackOffice Plus, main page you will also find a notification about errors produced during the day with a link to view complete information.

## Diagnose the trouble

If you want to diagnose and fix the error yourself first of all try to obtain all the information:

- 1- The error is produced always or just randomly?
- 2- The error is related to the StoreFront or BackOffice (management part)?
- 3- Which script caused the error?
- 4- You have verified the error or your customers told you? If your customers told you, did you get an automatic email with the error report?
- 5- The error is related to database, syntax, outbound emails, third-party credit card gateway, etc?
- 6- Can you verify the same error at current Comersus Demo? In that case could be a bug and not an error in your installation.
- 7- The error is related to any script modified or customized by you? Or is it produced over the original scripts?
- 8- Which Comersus StoreFront Version do you have? Which BackOffice version? Are you sure that your BackOffice or Power Pack is compatible with your StoreFront version?
- 9- Did you try Diagnostics and Tools? This free utility is very helpful to determine common installation errors.

## Get Assistance

You can read previous support assistance provided by Comersus at <http://www.comersus.org> In that site you can run a search by software version, keywords, etc. in order to determine if any other person has had a similar issue. Most problems are solved using a previous technical response.

If you can't find a previous message regarding the same topic, you can contact Comersus for a quote at <http://www.comersus.com/contact.html>

## Useful Tips

1. If your error was produced just once or once in a while, maybe the reasons were temporary (like database was down, connection trouble, session lost due to a specific condition of the server, etc). Try to determine whether the error deserves attention or not.
2. Make sure that you did follow all installation instructions.
3. If you get a database error you will also get an email with the SQL sentence that caused the error. You can try to run that sentence from SQL Utility of the BackOffice in order to determine the error nature and debug the situation.
4. All scripts have a sentence `ON ERROR RESUME NEXT` that causes execution to continue with the statement immediately following the statement that caused the run-time

error, or with the statement immediately following the most recent call out of the procedure containing the On Error Resume Next statement. If you get one specific error in one script you can comment that line and try the execution in order to verify if some other error is being trapped.

5. If the error is produced after custom modifications you can try to restore original scripts in order to debug which modification caused the error.
6. If you get email errors make sure that you have used Diagnostics and Tools to determine the email configuration and that email from address is not causing Relay troubles with your SMTP server.
7. If you get frequent database errors using Access in a high traffic store consider migrating to SQL Server or mySQL databases. Access has limitations in a high-traffic environment. You can ask about Comersus.com official hosting plans with mySQL databases enabled.
8. Make sure that you are using paid add-ons compatible with the version of the database and Storefront. For example: you cannot use 4.05 add-ons for Comersus StoreFront 4.11 (if one of the first 2 number changes, then some database modifications were included and that means that your old scripts will not be 100% compatible). To obtain upgrades of paid add-ons Version Upgrade Program is needed. Ask Comersus.com about this.
9. You can open includes/settings.asp with a text editor and change pTrapDbErrors=0. In this case most database errors will not be trapped and you can eventually see the SQL sentence that is producing the error printed on screen.
10. If you have defined an email component that is not installed in your server, then you are going to get execution errors in all scripts with email functions involved like saveOrder, newsletter, forgot password, email to friend, etc Set the email component to NONE and try again

## **Diagnostics and Tools Application**

You can download Diagnostics and Tools from Comersus Free Downloads page. This application has several tests to verify and diagnose technical problems.

Some of the options included are:

- ASP compatibility
- Session variables
- Database read and write
- Security Check

Other tools included are:

- Reset password of the Backoffice

- Session variables retrieval

# Appendix A

---

Web site home page and store home page

Your Web site's home page may or may not also be the store's home page. This is up to you. All store pages are saved in a directory on your Web server called *comersus/store*. The file name and location of the store's home page is as follows:

<http://www.yourwebsite.com/comersus/store/default.asp>

The easiest way to make your home page the store's home is to redirect your home page to this page. You can redirect a page to another page on your Web site in many different ways. An easy way to do it is to add the following META tag to the <head> section of your home page:

```
<meta http-equiv="refresh" content="0; url= http://www.yourwebsite.com/comersus/store/default.asp">
```

## HTML links to main store pages

The following is a list of links to special store pages. Remember that you can also use Generate Links from BackOffice+ to create these links dynamically.

**Store home:**

<http://www.yourwebsite.com/comersus/store>

**Hot Deals:**

[http://www.yourwebsite.com/comersus/store/comersus\\_listItems.asp?hotDeal=1](http://www.yourwebsite.com/comersus/store/comersus_listItems.asp?hotDeal=1)

**Browse by Category:**

[http://www.yourwebsite.com/comersus/store/comersus\\_listCategories.asp](http://www.yourwebsite.com/comersus/store/comersus_listCategories.asp)

**Catalog Search:**

[http://www.yourwebsite.com/comersus/store/comersus\\_advancedSearchForm.asp](http://www.yourwebsite.com/comersus/store/comersus_advancedSearchForm.asp)

**View cart:**

[http://www.yourwebsite.com/comersus/store/comersus\\_showCart.asp](http://www.yourwebsite.com/comersus/store/comersus_showCart.asp)

**Customer Login:**

[http://www.yourwebsite.com/comersus/store/comersus\\_customerAuthenticateForm.asp](http://www.yourwebsite.com/comersus/store/comersus_customerAuthenticateForm.asp)

**Product Links:**

[http://www.yourwebsite.com/comersus/store/comersus\\_viewItem.asp?idProduct=productID](http://www.yourwebsite.com/comersus/store/comersus_viewItem.asp?idProduct=productID)

For example, if the productID is 168, the link will be:

[http://www.yourwebsite.com/Comersus/store/comersus\\_viewItem.asp?idproduct=168](http://www.yourwebsite.com/Comersus/store/comersus_viewItem.asp?idproduct=168)

You can obtain the productID from the *Manage Products / Modify Products* page.

# Appendix B

---

## Customizing your store's graphical interface

It is a good idea to keep the look & feel of your Web site consistent across all pages. This helps you convey a sense of professionalism and quality to your Web site visitors. For this reason, your online store pages should appear just like any other page of your Web site. This section explains how to integrate your Web site's design with the pages generated dynamically by Comersus.

The following paragraphs require a basic understanding of HTML.

### First Step: create a template.

A template is typically a Web page that contains the main graphic and navigation elements that make up a Web site's interface. For example, the template on the right features a few graphic elements at the top, and a navigation menu on the left side. The page content would typically go where the "Insert Code Here" message is located. Comersus code would be inserted in the same area.

When you create a template, it is a good idea to change all the navigation and image locations from relative (e.g. *images/myimage.gif*) to absolute (*<http://www.mysite.com/images/myimage.gif>*). This ensures that none of the links will be broken, regardless of the directory or subdirectory where the page may be located.



### Second Step: create "header.asp" and "footer.asp".

Place your mouse cursor at the beginning of the section where the page content should appear. If you are using an HTML editor such as Macromedia® DreamWeaver or Microsoft® FrontPage, you can do this in the design view by positioning the cursor at the center of the cell that is going to contain the page content (i.e. shopping cart code, etc.).

Now switch to the HTML view to display the code. Copy all the code from that point to the beginning of the page, paste it into a new Notepad file, and save it as "**header.asp**". Go back to the template file and now copy all the code from that point to the end of the document, paste it into a new Notepad file, and save it as "**footer.asp**".

### Third Step: upload the files.

Upload both files to the "**comersus/store/**" folder on your Web server. You will see that sample files are already located in that folder. Rename the sample files before you upload your files to the server so that you can use them as a reference.

### Note: Linking from the template to the shopping cart.

You may want to add links to pages of your Web store directly from your template, so that the links are available to your site visitors from any page. For example, a link to the search page, to the "browse by category" page, the login page, etc.

For more information about how to generate links through Comersus, see *Store Options / Generate Links* or *Appendix A*.



# Appendix C

---

## How Language Works for Comersus

Language schema in Comersus is organized in 3 parts.

Part	Stored in	Modify with
Screen messages	screenMessages table and related to one specific store ID	Backoffice
Catalog descriptions (products, categories, optionals)	Products, optionsGroups, etc	BackOffice
HTML or Flash Layout	Comersus/store/header.asp footer.asp	Graphic Modification Program like Photoshop and HTML editor like DreamWeaver

If you want a full multilanguage store you will have to install one store per language and create a layout per translation.

## Multilanguage step by step

Example with English (base) and Spanish (translated) stores

1. Using BackOffice Plus create a new store named Spanish
2. Copy comersus/ folder as spanish/ excluding BackOffice folder
3. Edit spanish/includes/settings.asp and change the pIdStore according to the store ID obtained in step 1
4. Edit the layout of spanish/store/ to include Spanish translations
5. Go to BackOffice and translate the screen messages for the Spanish store
6. To translate every product, create a new product associated to the main product (Using the link Create a new product with existing stock repository)
7. Create a category schema like

Root

Root/English

Root/Spanish

And assign the idCategoryStart for every store.

## **Editing messages generated by Comersus**

Most of the text messages, links and form field descriptions that you see on your store are not hard-coded in the shopping cart pages, but rather fed automatically from the database. Those messages can be edited from BackOffice Plus, Settings, Screen Messages.

Layout messages must be modified using an HTML editor like DreamWeaver.

## **Defining customer languages selection**

To enable customer language selection you can create different links in your main site or an intermediate Select Your Language page with links to every language store.

# Appendix D

---

## Frequently Asked Questions

For an updated list of answers to frequently asked questions, visit the Comersus forum area located at the following address: <http://www.comersus.org>

---

### **What is the difference between Hot Deals/Clearance and Show In Home items?**

Show In Home items automatically appear on your store's front page. Hot Deals appear on the "Clearance" page that you can link to from anywhere on your Web site. A product may be both a Hot Deal and Show In Home item, or just one of the two. To set Hot Deals and Show In Home items, use the 'Modify Product' module of BackOffice +.

Note that the store's front page may or may not be your Web site's home page. It's up to you to set it up either way. For more information, see Appendix A of Comersus User's Guide.

---

### **What happens when I change the customer type to Wholesale?**

Retail (BtoC) customers are shown and charged the online price. Wholesale customers are shown and charged the wholesale price. You define the two prices when you add or modify a product using the Manage Products menu. In addition to prices, note that quantity discounts can be different for wholesale customers.

---

### **Will Retail customers or casual site visitors see the pricing I've set for wholesale customers?**

Every customer will get their own price after login

---

### **If I don't want to ship a certain product, how can I have shipping options not appear during the checkout process when customers select that product?**

Simply set the weight to zero in the product details page. To do so, select *Modify Products* in the *Manage Products* menu. When the weight is set to zero and your shipping options are defined from  $\text{weights} > 0$  your shipping options are not displayed during the checkout process. This does not affect other products. You can define "Shipping is not needed" for  $\text{weight} = 0$ .

---

### **Can I print an invoice from within BackOffice +?**

Yes. To print an invoice, click on *Generate Invoice* link at *Sales Menu*. Find the order you want to generate an invoice for and click on the Invoice icon. You can now print the invoice for faxing or mailing.

---

### **How do I find out the credit card number used for a transaction?**

If you use real-time credit card processing on your store, then the payment gateway that you set up to handle your transactions will hold that information securely. Since transactions are processed automatically, you will rarely need to know the credit card number. If you needed credit card details, you would log into the administration area that most gateways provide, or contact the gateway directly.

If you use off-line credit card processing on your store, then you need to retrieve credit card details to process the transaction after an order has been placed. Credit card information is encrypted and stored in your store's database. It is never included in confirmation e-mails sent to you or the customer by Comersus. The only way to view it is to display details for a particular order via the *Sales and Customers menu, show order module* of BackOffice +. The information is decrypted *on-the-fly* for you to view through BackOffice +.

---

### **How do I link my Web site to the shopping cart?**

Linking static pages on your Web site to the dynamic Web pages generated by Comersus is very easy. In this guide you can see most important links' HTML code to link any page of your Web site to the area of your on-line store that you have selected.

There are two types of links that you will likely use:

- Product links, which allow you to deep-link into the product catalog to a product details page.
- Store links, which allow you to link to store pages such as the "search" page, the "browse by category" page, the "view shopping cart" page, etc.

---

### **Can I change the store buttons?**

You can customize the appearance of your shopping cart buttons by uploading new buttons to your Web server. You also need to change the HTML templates involved by checking that you are not touching ASP tags or any other programming code. Usually you will need to modify `comersus_viewitem.asp` and `itemdetailsm.asp` files.

Note: before you upload new buttons to your on-line store, make sure that the buttons have been saved in a compatible format (JPEG or GIF), and that they are small enough to display properly on your store (try not to exceed 110 x 25 pixels).

---

### **Can I modify some of the wording on the shopping cart?**

Yes, any message or field description that appears on your storefront can be changed. Comersus keeps virtually all of them in `screenMessages` database table, that can be modified with Backoffice Plus or with plain SQL Sentences if you don't have BackOffice Plus.

---

**When customers browse my store by category, only 10 categories are displayed per page. Is there a way to change that number?**

There is a line of code in a file named "comersus\_listProductsAndCategories.asp" that reads:

```
const pNumPerPage = 10
```

You can change that number to have more or fewer categories appear on each page.

---

**I would like to use pages that are already on my Web site as product descriptions. How can I do that?**

Comersus allows you to use HTML tags in the product description field. This means that you can easily link from your shopping cart's product details page to other pages on your site.

---

**How can I define different shipment methods based on weight (or price, quantity) and address?**

1. Define a new Shipment Method (Shipments table).
2. Put WeightFrom=0 and WeightUntil=10 for cart total weight between 0 and 10 so this shipment method will appear only in that case.
3. If you want that Shipping method for California state, put CA in stateCode and stateCodeEq=-1 (That shipment will apply only for California). To define another shipment for the other states you can include another shipment row with CA in stateCode and stateCodeEq=0.

*You can also use Real Time UPS/USPS/Fedex/DHL calculation instead of defining all shipping rules manually.*

---

**How can I import the product database from other programs?**

You can use BackOffice Lite/Utilites/Import to perform this task. Consider that you will need the exported products table from the previous program in a plain text format, and that only basic attributes will be imported. If you need a fine importing automatic procedure contact us to make an estimate based on your file format.

---

**How can I give special prices to some customers?**

Using BackOffice Plus, Sales and Customers menu, List All Customers, you can assign special prices for certain customers. Remember that the customer must log in in order to be authenticated and receive the special prices.

**How can I define a Tax of 0.21 for customers in one state (country, zip) and no Tax if the user is from another place?**

1. Using BackOffice+ define a new taxPerPlace record.
  2. Insert a new row containing stateCode=CA, stateCodeEq=-1 and taxPerPlace=0,21.
- 

**How can I define different Taxes depending on the product if the user is from Italy?**

1. Using BackOffice+ define a new taxPerProduct record.
  2. Insert a new row with CountryCode=IT, countryCodeEq=1 and taxPerProduct=0,25
  3. You can add another row for another product with different Tax (0,28...).
- 

**How can I force the user to select product variations like Color, Size, etc?**

You can use the setting pForceSelectOptionals=-1.

---

**How can I remove shipping selection? My store doesn't need shipping options.**

Edit pByPassShipping setting and no shipping selection will be required to the customers.

---

**How can I distribute serials or download links automatically with each purchase of my product named "Software-2001"?**

Edit the product "Software-2001" and insert the serial or download link in DigitalGoods field (emailText). Configure your payment gateway to make a silent response to comersus\_gatewayXXXSilentResponse.asp (rename the file for security reasons). Each time you receive a payment, the information entered into emailText will be sent to the customer by email. Customer can also download digital goods from Your Account section.

You can also distribute serials and download links using PayPal.

1. Log in to your PayPal account, go to Profile, Instant Payment Notification Preferences.
2. Change IPN: on, IPN Url:  
[http://yourDomain.com/comersus/store/comersus\\_gatewayPayPalSilentResponse.asp](http://yourDomain.com/comersus/store/comersus_gatewayPayPalSilentResponse.asp)
3. Make some payment to your store using PayPal and test the configuration.

*Note: you can also make that distribution manually from BackOffice +, when you mark an order as paid.*

---

---

### **How can I assign a product to several categories?**

If you are using BackOffice +, just use unlimited category assignment.

If you don't have BackOffice +, or if you want to understand categories structure better, here you have a more complete explanation.

Since Comersus 3.7x you can assign one product to several categories. You just have to add a new row to categories\_products indicating idProduct, idCategory.

Example: Windows Millenium (idProduct=2) to categories Computers (idCategory=5) and OS (idCategory=8).

Add to rows:

2,5

2 , 8

---

### **My Gateway for online credit card payments is not included. Can I still use Comersus with it?**

Sure, you can send us the gateway documentation and we will try to include it in our next release. You can also make some modifications to the provided examples.

1. Open any comersus\_gatewayXXXX.asp and save it using a different name (like comersus\_gatewayYourGatewayHere.asp).
2. Check your gateway system documentation and change the Action Form tag in the script comersus\_gatewayYourGatewayHere.asp .
3. Check also all necessary hidden and non-hidden fields. Replace those INPUT tags using gateway system documentation (usually you will need to verify total field, idOrder - Invoice number - ,personal data of the customer, CC number and expiration date).
4. Add a new payment method named "Credit Cards" or similar with redirectionUrl pointing to the new script renamed.

---

### **I don't understand how Real Time Shipping (UPS or USPS) feature works**

Real Time UPS and Real Time USPS packages are included in some Power Packs. Real Time Shipping disables all manual shipping settings defined and acts as an interface between Comersus and UPS/USPS.

When the customer makes the checkout process, Real Time Shipping sends all relevant transaction details like: total weight, shipping address at origin and shipping address at destination, etc. The package retrieves in Real Time 4/5 configurable shipping types for those specifications and then returns to Comersus in order to create a Drop Down Box showing different combinations of shipping types and shipping charges. The customer completes the order as usual. All this process is hidden to the customer and it takes no relevant time to get the Real Time Quotes.

---

### **Can I use one BackOffice Package for multiple stores?**

BackOffice Plus comes with Per Store License, so you can install just one copy of the BackOffice software in your server. Anyway you can still use one BackOffice with several stores by developing a script that connects the BackOffice to different stores at login time. Check out Multilicenses and Reseller Kits at <http://comersus.com/pricing.html>

---

### **My BackOffice Plus shows demo warnings everywhere. How do I disable demo mode?**

---

You have to change the setting `pDemoStoreFront` = 0.

---

### **How can I replace the “No Image Available” graphic file?**

Whenever you don't upload images for a certain product, a default graphic is shown on any page that displays information about that product (search pages, product details page, etc.). You can easily replace the default graphic with your own by following these simple steps.

1. Create the new image file that will be displayed whenever a product image is not available. The image should be 100 x 100 pixels.

2. Save the file as “**imageNa.gif**”.

Upload the file to the “comersus/store/catalog” subfolder on your Web server, using any FTP program, or using the Upload Product Images module of Comersus, which is located in the Manage Products menu of the Comersus administration console.

From now on this image will be displayed whenever a product image is not available.

---

### **How can I limit the admins access to certain parts of the BackOffice?**

Using BackOffice+ you can create a new admin record and assign an existing admin level such as moderator (admin level 50) or listing (admin level 75) or you can also create a new level. Those

---



admins will have access only to specific parts of the BackOffice that you can limit by modifying page level variable.

For example, the script `comersus_backoffice_menuListing.asp` has this header:

```
<%  
' Comersus BackOffice  
' e-commerce ASP Open Source  
' http://www.comersus.com  
pPageLevel=Cint(75)  
%>
```

In this script the line `pPageLevel=Cint(75)` says that all the admins whose admin level is more than 75 will receive this message from the script: “You don't have enough permissions”.

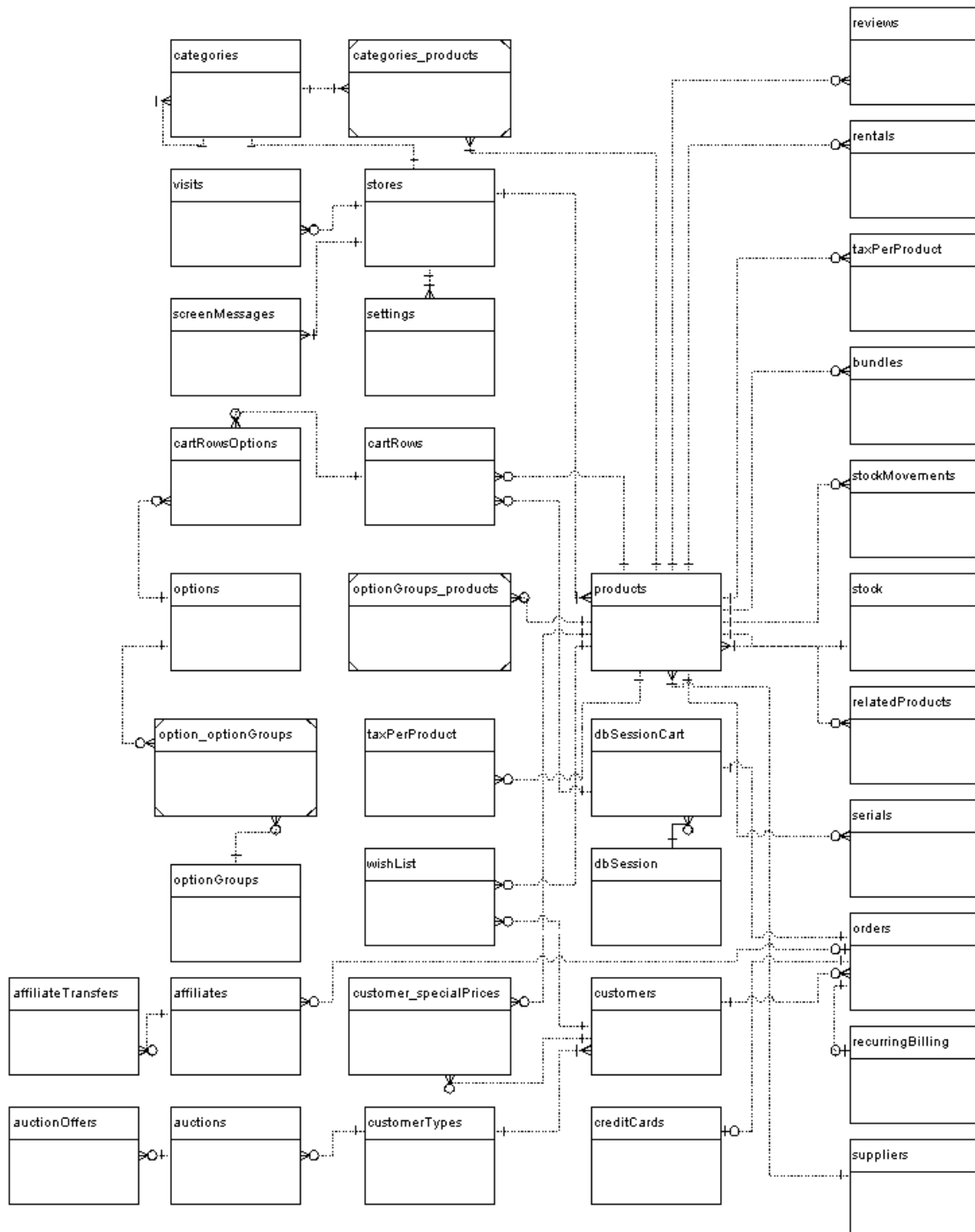
Knowing this you have to modify this line `pPageLevel=Cint(75)` from the script in order to limit the access by the different admins.

---

For an **updated list** of answers to frequently asked questions, visit the Public Forum located at the following address: <http://www.comersus.org>

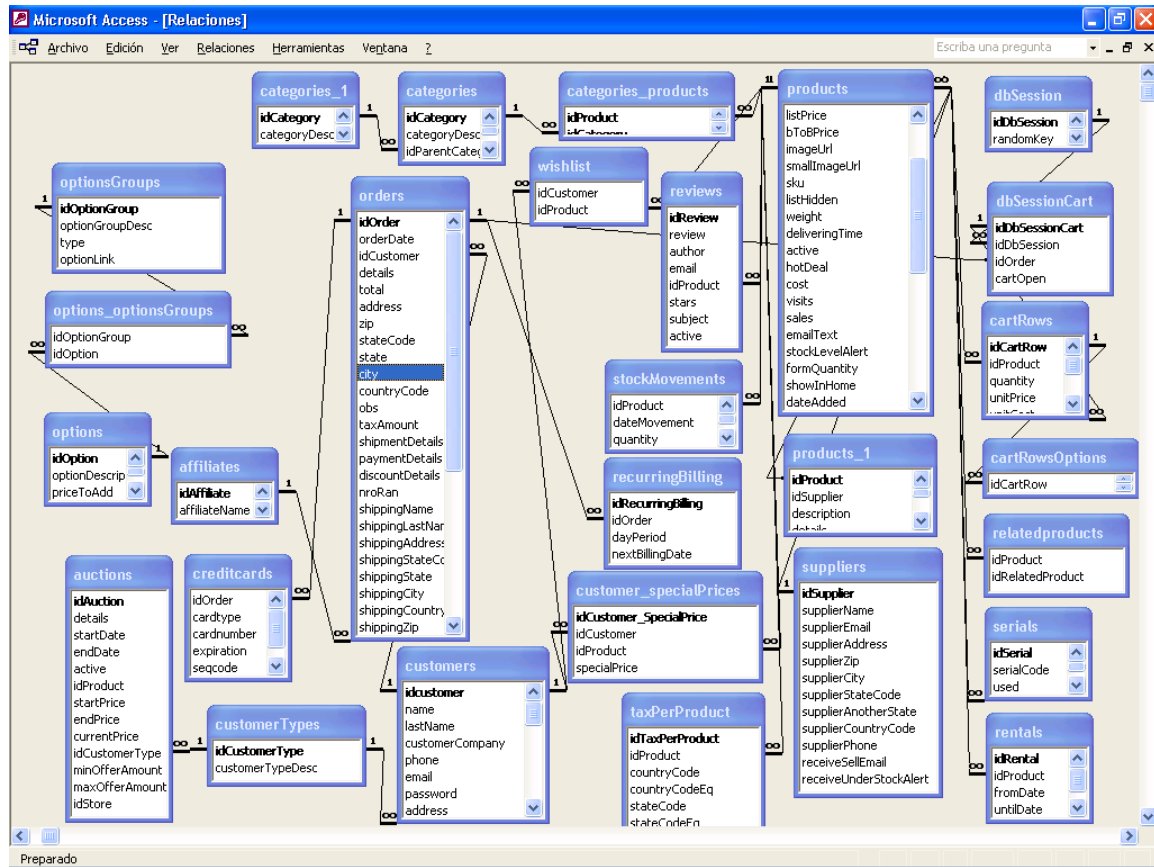
# Appendix E

## ERD Database Chart





## Relationships and fields



## Database description

Table	Field	Details
<b>admins</b>	<i>Administrator users for the BackOffice</i>	
	idAdmin	Unique key field for the table
	adminName	Name of the admin user
	adminPassword	Encrypted password
	adminLevel	Lower level means more permissions inside BackOffice+
	lastLogin	Date of last login for security purposes
	idSupplier	Id of the supplier for BackOffice+ private login
	idAffiliate	Id of the affiliate for BackOffice+ private login
<b>affiliates</b>	IdStore	Id Store
	<i>Affiliates of the store</i>	
	idAffiliate	Unique key field for the table
	affiliateName	Name of the affiliate
	affiliateEmail	Email of the affiliate
	commission	commission for the affiliate
<b>affiliatesTransfers</b>	idStore	Id Store
	<i>Transfers made to affiliates</i>	
	idAffiliateTransfers	Unique key field for the table
	idAffiliate	ID of the affiliate used for this transfer
	amount	Transfer amount
	transferDate	Date of the transfer
<b>auctionOffers</b>	comments	Comments of transfer
	<i>Bids posted</i>	
	idAuctionOffer	Unique key field for the table
	idAuction	Id of the auction
	idCustomer	Id of the customer that did post the bid
	offerDate	Bid date
<b>auctions</b>	offerAmount	Bid amount
	<i>Auctions of the store</i>	
	idAuction	Unique key field for the table
	auctionName	Description of the auction
	details	More details about the auction
	startDate	Release date of the auction
	endDate	Last day of the auction
	active	Enable or disable the auction
	idProduct	Id of the product used for this auction
	startPrice	Starting price
	endPrice	Ending price
	currentPrice	Current price
	idCustomerType	Auction defined for this customer type
	minOfferAmount	Minimum offer
	maxOfferAmount	Maximum offer
<b>blockKeywords</b>	idStore	Id Store
	<i>Keywords to be used by fraud filtering</i>	
	idBlockKeyword	Unique key field for the table

	keywordText	keyword to be blocked
	idStore	Id Store
<b>bundles</b>	<i>Bundle products structure</i>	
	idBundle	Unique key field for the table
	mainIdProduct	id of the product that will appear in search and listing
	idProduct	id of each sub-product of the bundle
<b>cartRows</b>	<i>cart details structure for current carts and historic orders</i>	
	idCartRow	Unique key field for the table
	idProduct	id of each product in the cart
	quantity	Quantity for that product
	unitPrice	Price per unit
	unitCost	Cost per unit
	unitWeight	Weight per unit
	unitBtoBPrice	Wholesale price per unit
	idDbSessionCart	id of the dbSession cart record
	personalizationDesc	Personalization text of that product
<b>cartRowsOptions</b>	<i>Variations for cart contents</i>	
	idCartRow	Id of the cart row with this variation
	idOption	Id of the variation related to the cartRow
	priceToAdd	Price of the variation
	optionDescrip	Variation name
<b>categories</b>	<i>Categories structure</i>	
	idCategory	Unique key field for the table
	categoryDesc	Category name
	idParentCategory	Id of the parent category, NULL for root
	displayOrder	Index order for display purposes
	active	Enable or disable the category
	imageCategory	Image file name for the category
<b>categories_products</b>	<i>RelationShip between categories and products</i>	
	idProduct	Id of the product
	IdCategory	Id of the category assigned to that product
<b>countryCodes</b>	<i>Countries used for customers, orders, suppliers, etc</i>	
	countryCode	Code of the country: US, BR, etc
	countryName	Complete name of the country
<b>creditCards</b>	<i>Off line credit card payments</i>	
	idOrder	Id of the order with this offline payment
	cardType	Credit card code type: VI, AM, etc
	cardNumber	Number of the card
	expiration	Expiration date
	seqCode	CVV2 code
	obs	Comments for this payment
<b>conditions</b>	<i>Only used for store conditions, to be replaced soon</i>	
	conditions	Store general Conditions HTML text
	idStore	Id Store
<b>currencyStatic</b>	<i>Currency conversion with static table</i>	
	idCurrencyStatic	Unique key field for the table
	currencyName	Description of the currency
	conversion	Conversion factor considering main currency
	currencySign	Sign of the currency
<b>customer_specialPrices</b>	<i>Special prices for specific customers</i>	

<b>customers</b>	idCustomer_specialPrices	Unique key field for the table
	idCustomer	Id of the customer
	idProduct	Id of the product
	specialPrice	Special price of that product for that customer
	<i>Customers table</i>	
	idCustomer	Unique key field for the table
	name	First Name
	lastName	Last Name
	customerCompany	Company
	phone	Phone
<b>customerTypes</b>	birthday	birthday
	email	Email
	password	Encrypted password
	address	Address
	zip	Zip code
	stateCode	State code for the main country
	state	Another state (if state code is not used)
	countryCode	Code of the country: US, BR, etc
	shippingName	If shipping is different than billing
	shippingLastName	If shipping is different than billing
	shippingAddress	If shipping is different than billing
	shippingCity	If shipping is different than billing
	shippingStateCode	If shipping is different than billing
	shippingState	If shipping is different than billing
	shippingCountryCode	If shipping is different than billing
	shippingZip	If shipping is different than billing
	idCustomerType	Customer Type (Retail, Wholesale, etc)
	idLanguage	Language of the customer
	bonusPoints	Current reward points
	wapAccess	If it has access to WAP store (cell phones)
	active	If customer is active
	user1	Custom field for customer record
	user2	Custom field for customer record
	user3	Custom field for customer record
	idStore	Id Store
	<i>Customer types</i>	
<b>dbSession</b>	idCustomerType	Unique key field for the table
	customerTypeDesc	Description
<b>dbSessionCart</b>	<i>Session headers stored in database</i>	
	idDbSession	Unique key field for the table
	randomKey	Random contents used to retrieve fields
	idCustomer	Customer of that session
	sessionData	Field to store temporary form fields
	sessionType	WEB, WAP, etc
	dbSessionDate	Date of the session
	<i>Cart headers related to dbSession</i>	
<b>dbSessionCart</b>	idDbSessionCart	Unique key field for the table
	idDbSession	Cart is related to one session
	idOrder	Filled only if the order is saved to relate cart to orders
	cartOpen	Boolean, the cart is closed when the order is saved

<b>discounts</b>	<i>Discounts with code</i>	
	idDiscount	Unique key field for the table
	discountDesc	Description
	priceToDiscount	Fixed price to discount
	percentageToDiscount	Percentage of the purchase to discount
	discountCode	Customer code for the discount
	active	Boolean, to enable or disable the discount
	used	Boolean, if it has been used
	oneTime	Use the discount one or many times
	quantityFrom	Filter for cart content
	quantityUntil	Filter for cart content
	weightFrom	Filter for cart content
	weightUntil	Filter for cart content
	priceFrom	Filter for cart content
	priceUntil	Filter for cart content
	idProduct	If the discount is specific for one product, otherwise is Null
	idStore	Id Store
<b>discountsPerQuantity</b>	<i>Discounts based on quantity ordered</i>	
	idDiscountPerQuantity	Unique key field for the table
	idProduct	Id of the product
	discountDesc	Description
	quantityFrom	Quantity bounds of that product
	quantityUntil	Quantity bounds of that product
	discountPerUnit	Fixed amount to discount per product
<b>emails</b>	idEmail	Id of the email
	emailDescription	Email Description
	emailSubject	Email Subject
	emailBody	Email Body
	idStore	Id Store
<b>conditions</b>	<i>Only used for store conditions, to be replaced soon</i>	
	conditions	Store general Conditions HTML text
	idStore	Id Store
<b>newsLetter</b>	<i>Newsletter emails</i>	
	idEmail	Unique key field for the table
	email	Email
	idStore	Id Store
<b>options</b>	<i>Variations structure</i>	
	idOption	Unique key field for the table
	optionDescrip	Description of the variation
	priceToAdd	Price of the variation
	weight	Weight of the variation
	imageUrl	Image name
<b>options_optionsGroups</b>	<i>Relationship between options and options groups</i>	
	idOptionGroup	Id of the option group
	idOption	Id of the option
<b>optionsGroups</b>	<i>Options groups</i>	
	idOptionGroup	Unique key field for the table
	optionGroupDesc	Description of the group
	type	Type of the group (R=Radio, C=Checkbox, D=Dropdown)



<b>optionsGroups_products</b>	optionLink	Link
	<i>Relationship between options groups and products</i>	
	idProduct	Id of the product
<b>orders</b>	idOptionGroup	Id of the group
	<i>Orders table</i>	
	idOrder	Unique key field for the table
	orderDate	Date
	idCustomer	Id of the customer
	details	Products ordered snapshot
	total	order amount
	address	Billing Address
	zip	Idem
	stateCode	Idem
	state	Idem
	city	Idem
	countryCode	Idem
	obs	Customer comments
	taxAmount	Order tax amount
	shipmentDetails	Description and amount of shipment
	paymentDetails	Description and amount of payment
	discountDetails	Description and amount of discount
	nroRan	Random contents used to retrieve fields
	shippingName	Name for shipping
	shippingLastName	Name for shipping
	shippingAddress	Shipping Address
	shippingStateCode	Shipping Address
	shippingState	Shipping Address
	shippingCity	Shipping Address
	shippingCountryCode	Shipping Address
	shippingZip	Shipping Address
	orderStatus	Status of the order (1-5)
	viewed	If the order has been viewed in BackOffice+
	digitalEmailText	URL of digital goods or any other information to be distributed
	idAffiliate	Id of the affiliate used for this order
	idCustomerType	Customer Type when the order was saved
	browserIP	IP of the client when the order was saved
	transactionResults	Authorisation codes, etc
	shipmentTracking	Shipment tracking information
	vatNumber	VAT number
	wishListIdCustomer	If the order was posted using a wish list
	user1	Custom order fields
	user2	Custom order fields
	user3	Custom order fields
	idStore	Id Store
<b>payments</b>	<i>Payment types with rules</i>	
	idPayment	Unique key field for the table
	paymentDesc	Description
	priceToAdd	If the payment type increases the amount
	percentageToAdd	Idem with percentages of the order
	redirectionUrl	URL for payment forms

## products

emailText	Information about the payment to be distributed by email
quantityFrom	Filtering purposes
quantityUntil	Filtering purposes
weightFrom	Filtering purposes
weightUntil	Filtering purposes
priceFrom	Filtering purposes
priceUntil	Filtering purposes
idCustomerType	Type of customers for this payment
idStore	Id Store
<i>Products catalog structure</i>	
idProduct	Unique key field for the table
idSupplier	Id of the supplier
idStock	Id of Stock related.
description	Shorty description
details	Details with HTML
searchKeywords	Keywords for meta tags
price	retail price
listPrice	Comparison price
bToBPrice	Wholesale price
imageUrl	URL of the main image
smallImageUrl	URL of small image
sku	Product code
listHidden	Hide the product in listings
weight	Weight of the product
deliveringTime	Time to obtain the product
active	Product is active
hotDeal	Product is a hot deal
freeShipping	Product has free shipping
isBundleMain	Product is the main of the bundle
bonusPoints	How many bonus points provides
cost	Cost price
visits	How many visits
sales	How many sales
emailText	Digital goods to be distributed
stockSecurity	Level to maintain
stockCostOrder	Cost of purchasing a new order
stockDelay	Delay to replace since order is posted
stockMinimumOrder	Minimum qty to order
stockLevelAlert	Alert to administrators at this level
showInHome	Show product in dynamic home
dateAdded	Date of product creation
rental	Product is rental
length	Size
width	Size
height	Size
hasPersonalization	Custom engraving, etc
idStore	Id Store
user1	Custom field 1
user2	Custom field 2
user3	Custom field 3

<b>stores</b>	imageUrl2	Image name 2
	imageUrl3	Image name 3
	imageUrl4	Image name 4
<b>recurringBilling</b>	idStore	Unique key field for the table
	storeDescription	description
	idCategoryStart	Starting ID for categories tree
	<i>Structure to maintain recurring billing</i>	
<b>relatedProducts</b>	idRecurringBilling	Unique key field for the table
	idOrder	Id of the order to be re-created
	daysPeriod	Period to re-create the order
	nextBillingDate	Next date to create the order
<b>reviews</b>	<i>Relationship between products and related products</i>	
	idProduct	Id of the product
	idRelatedProduct	Id of the related product
	<i>Customer reviews</i>	
<b>screenMessages</b>	idReview	Unique key field for the table
	review	Review text
	author	Name of the author
	email	Email of the author
<b>serials</b>	idProduct	Id of the product that has the review
	stars	How many stars 1-5
	subject	Review subject
	Active	Review is active
<b>shipments</b>	<i>Messages displays in screens</i>	
	dbIdScreenMessage	Unique key field for the table
	idScreenMessage	Id Message
	idStore	Id Store
<b>serials</b>	screenMessage	Message
	fileName	Reference to file where the message is used.
	<i>Serial codes to be distributed</i>	
	idSerial	Unique key field for the table
<b>shipments</b>	serialCode	Unique code
	idProduct	Id of the product that has this serial
	used	Serial has been distributed already
	<i>Shipment types and rules</i>	
<b>shipments</b>	idShipment	Unique key field for the table
	shipmentDesc	Description
	priceToAdd	Shipment fixed price
	percentageToAdd	Shipment percentage price
<b>shipments</b>	shipmentTime	Time of the delivery
	quantityFrom	Filtering purposes
	quantityUntil	Filtering purposes
	weightFrom	Filtering purposes
<b>shipments</b>	weightUntil	Filtering purposes
	priceFrom	Filtering purposes
	priceUntil	Filtering purposes
	stateCode	State code of this rule
<b>shipments</b>	stateCodeEq	State code of the order equal to rule state
	zip	Zip code of this rule

	zipEq	Zip code of the order eq to rule
	countryCode	Country code of the rule
	countryCodeEq	Country code of the order equal to rule
	handlingPercentage	Percentage for handling
	handlingFix	Fix amount for handling
	idCustomerType	Customer type for this shipment
	idStore	Id Store
<b>stateCodes</b>	<i>State description and codes</i>	
	stateCode	Code for the state
	stateName	State name
<b>stock</b>	<i>Stock for each product</i>	
	idStock	Id of the stock
	idProductMain	Id of the product
	stock	Stock
	stockSecurity	Stock security
	stockCostOrder	Stock cost order
	stockDelay	Stock delay
	stockMinimumOrder	Minimum stock to make an order
	stockLevelAlert	Stock level to alert
<b>stockMovements</b>	<i>Movements of stock (including movements with each paid order)</i>	
	idProduct	Id of the product
	dateMovement	Date of the movement
	quantity	Quantity (positive or negative)
	obs	Comments
<b>storeNews</b>	<i>Simple news to be shown in store</i>	
	idStoreNews	Unique field
	newsText	News text (HTML allowed)
	newsDate	News date
	idStore	Id Store
<b>suppliers</b>	<i>Suppliers table</i>	
	idSupplier	Unique field
	supplierName	Name of the supplier
	supplierEmail	Email of the supplier
	supplierAddress	Address of the supplier
	supplierZip	Address of the supplier
	supplierCity	Address of the supplier
	supplierStateCode	Address of the supplier
	supplierAnotherState	Address of the supplier
	supplierCountryCode	Address of the supplier
	supplierPhone	Phone of the supplier
	receiveSellEmail	Receive a notification with each sale
	receiveUnderStockAlert	Receive a notification with under stock
<b>taxPerPlace</b>	<i>Tax per location</i>	
	idTaxPerPlace	Unique key field for the table
	countryCode	Country code for this tax
	countryCodeEq	If the rule tax is equal to order tax
	stateCode	State code for this tax rule
	stateCodeEq	If the rule is equal to order
	zip	Zip of the tax rule
	zipEq	If the rule is equal to order

<b>taxPerProduct</b>	taxPerPlace	tax percentage
	idCustomerType	Customer types
	<i>Tax per product and location</i>	
	idTaxPerProduct	Unique key field for the table
	idProduct	Id of the product
	countryCode	Country code for this tax
	countryCodeEq	If the rule tax is equal to order tax
	stateCode	State code for this tax rule
	stateCodeEq	If the rule is equal to order
	zip	Zip of the tax rule
	zipEq	If the rule is equal to order
	taxPerProduct	tax percentage
<b>visits</b>	<i>Carts stored for wap cell phones</i>	
	idVisit	Unique key field for the table
	userIP	User ip address
	referrer	Referrer
	keywords	Keywords
	visitDate	Date of visit
	visitTime	Time of visit
	idStore	Id Store
<b>wapCarts</b>	<i>Carts stored for wap cell phones</i>	
	idWapSession	Unique key field for the table
	idProduct	Id of the product
	quantity	
<b>wapSessions</b>	<i>Session stored for wap cell phones</i>	
	idWapSession	Unique key field for the table
	randomKey	Random contents used to retrieve fields
	idCustomer	Id of the customer
	idPayment	Id of the payment used
	isdShipment	Id of the shipment used
<b>wishList</b>	<i>Customer wish list</i>	
	idCustomer	Id of the customer
	idProduct	Id of the product
<b>settings</b>	<i>Store settings</i>	
	idSetting	Unique key field for the table
	settingKey	Key of the setting (pStoreFrontDemo)
	settingValue	Value for that key
	comments	Key description
	idSettingGroup	For grouping purposes
	IdStore	Id Store
<b>rentals</b>	<i>Rental table</i>	
	idRental	Unique key field for the table
	idProduct	Id of the product
	fromDate	Rental interval
	untilDate	Rental interval
	idOrder	Id of the order

# Appendix F

---

## Comersus Power Pack

The *Power Pack* is an optional packages with additional features designed to increase the power of your Comersus Store. The Power Pack include a lot of features such as: BackOffice +, Random Product, Best Sellers, Fraud Prevention, Forgot Password, Auctions, Currency Conversion, Real Time UPS, Reviews, Related Products, Newsletter, Real Time United States Postal Service, Dynamic Price List, Digital Download, 1 Step Checkout and more.

**Note:** You can also develop these features if you have programming skills. However you will find it more reliable, sound and time saving to use this Official Power Packs designed by the same developers who created Comersus Free Distribution.

	Power Pack
Price	<b>\$299</b>
BackOffice	BackOffice+ Full Featured
Access DB	Yes
SQL Server DB	Yes
MySQL DB	Yes
Advanced Features	All advanced features
Payment Gateways	100 payment gateways for selection

*Note 1: You have to choose one payment gateway for each Power Pack. Only Reseller Kits includes all payment gateways.*

*Note 2: features of each package and prices may change. Visit [comersus.com](http://comersus.com) to verify the latest features of each Power Pack.*

**Why do you sell a Power Pack if Comersus is Open Source?:** there are several business models associated to Open Source Software. We choose this option of charging for services and for great value Power Pack. However any user may develop their own Power Pack replacements since we provide all the documentation and assistance to customize Comersus.

More information about Comersus Power Packs at <http://www.comersus.com/pricing.html>

# Appendix G

---

## Programming reference

Here you will find a general reference to customize Comersus Cart. With simple lines of code you can retrieve and insert data into Comersus database. We will also provide a Vbscript reference so you can manipulate the information and create advanced scripts to extend default functionality of the cart.

### Retrieve data from the database

1. Open your text editor and create a new file with .asp extension placed inside comersus/store folder.
2. At the beginning of the script place all the necessary includes.

```
<!--#include file="../includes/settings.asp"-->
<!--#include file="../includes/databaseFunctions.asp"-->
<!--#include file="../includes/getSettingKey.asp"-->
<!--#include file="../includes/sessionFunctions.asp"-->
```

Note: settings and databaseFunctions are used to establish a database connection to retrieve or insert data. getSettingKey and sessionFunctions are used to retrieve certain configuration keys from settings table.

3. Open the ASP tag and enter the basic lines needed in almost all headers. In this case we are telling the web server to continue, even if some error occurs, we define some local variables used for the database connection and we retrieve a configuration key (the name of the logo image).

```
<%
on error resume next
dim connTemp, rsTemp
pCompanyLogo = getSettingKey("pCompanyLogo")
```

4. We will get how many customers we have in the store with a simple SQL query

```
mySql="SELECT COUNT(*) AS pCount FROM customers"
call getFromDatabase (mySql, rsTemp, "test")
%>
```

5. Then we print the result using the store layout defined by header and footer templates.

```
<!--#include file="header.asp"-->
```

```

<br>There are <%=rstem("pCount")%> customers in this store.
<%call closeDb()%>
<!--#include file="footer.asp"-->

```

If you execute this script you will get the number of customers printed on the screen.

In this case the result of the SQL Query was just one row, so we didn't have to iterate between the recordset. What if we need the ability to show a listing? We will have to make a loop to print all returned records.

1. First of all we send the new SQL Query. In this case we will get the idproduct, the sku and the stock for the whole catalog.

```

mySql="SELECT idProduct, sku, stock FROM products"
call getFromDatabase (mySql, rsTemp, "test")

```

2. If the query returns an empty recordset we redirect to a message screen informing this situation

```

if rstemp.eof then response.redirect "comersus_message.asp?
message="&Server.Urlencode("There are no products in the database")
%>

```

3. Then we print the layout and we make the iteration inside the recordset

```

<!--#include file="header.asp"-->
<%do while not rstemp.eof%>
<br>ID: <%=rstem("idProduct")%> - SKU: <%=rstem("sku")%> - STOCK: <
%=rstem("stock")%>
<%rstemp.movenext
loop%>
<%call closeDb()%>
<!--#include file="footer.asp"-->

```

### Inserting data in the database

The situation is very similar. In this case we will add a new supplier named John Doe to the database.

```

mySql="INSERT INTO suppliers (supplierName) VALUES ('John Doe')"
call updateDatabase (mySql, rsTemp, "test")
response.redirect "comersus_message.asp?message="&Server.Urlencode("Supplier added.")

```



call closeDb()

Note that we have used updateDatabase function instead of getFromDatabase. Since we used a query to add a record to the database, we don't need to show any result from the database. We only redirect to a message screen with a confirmation message.

## Vbscript Reference

Comersus was developed using Active Server Pages with Vbscript programming language. Here you can find a reference with most used sentences.

### Conditional Statements

You can control the flow of your script with conditional statements and looping statements. Using conditional statements, you can write VBScript code that makes decisions and repeats actions.

IF THEN ELSE

The **If...Then...Else** statement is used to evaluate whether a condition is **True** or **False** and, depending on the result, to specify one or more statements to run. Usually the condition is an expression that uses a comparison operator to compare one value or variable with another

```
If value = 0 Then
    Response.write "The value is 0!"
End if
```

### Looping

Looping allows you to run a group of statements repeatedly. Some loops repeat statements until a condition is **False**; others repeat statements until a condition is **True**. There are also loops that repeat statements a specific number of times.

```
Do while not rstemp.eof
    Response.write "<br>Record: "&rstemp("idProduct")
    rstemp.movenext
loop
```

### For Next

Repeats a group of statements a specified number of times.

```
For f=0 to 10
    response.write "<br>Number: "&f
next
```

## Functions

Array(): Returns a **Variant** containing an array.

Cint(): Returns an expression that has been converted to a **Variant** of subtype **Integer**.

Cdbl(): Returns an expression that has been converted to a **Variant** of subtype **Double**.

Date: Returns the current system date.

Instr(): Returns the position of the first occurrence of one string within another..

Left(): Returns a specified number of characters from the left side of a string.

Len(): Returns the number of characters in a string or the number of bytes required to store a variable.

## SQL Reference

Create a table

```
CREATE TABLE tableName
```

```
(  
  columnName1 dataType,  
  columnName2 dataType,  
  .....)
```

Create index

```
CREATE UNIQUE INDEX indexName
```

```
ON tableName (columnName)
```

Delete index

```
DROP INDEX tableName.indexName
```

Delete table

```
DROP TABLE tableName
```

Select

```
SELECT columnName(s) FROM tableName
```

Select with GroupBy

```
SELECT column,SUM(column) FROM table GROUP BY column
```

Insert new rows

```
INSERT INTO tableName (column1, column2,...)  
VALUES (value1, value2,...)
```

Update

```
UPDATE tableName SET columnName = newValue  
WHERE columnName = someValue
```

Delete rows

```
DELETE FROM tableName WHERE columnName = someValue
```

## **Final Notes and acknowledgments**

*Vbscript reference based on Vbscript Language Reference, Microsoft Corporation*

*Your contributions are important and welcome. Please contact us at <http://www.comersus.com/contact.html> to send us corrections to this User's Guide. If you are interested in maintaining a translated version of this document let us know.*